

2019 Annual Report of the Maryland Historical Trust

July 1, 2018 - June 30, 2019

Maryland Department of Planning

Maryland Historical Trust

100 Community Place

Crownsville, MD 21032-2023

410-697-9591

Planning.Maryland.gov

MHT.Maryland.gov





Table of Contents

The Maryland Historical Trust Board of Trustees	2
Who We Are and How We Work	3
Maryland Historic Revitalization Tax Credit	4
Historic Preservation Capital Grant Program	8
Maryland Heritage Areas Program	10
Archeological Research and Survey	15
African American Heritage Preservation Program	19
Architectural Research and Survey	22
Maryland Archaeological Conservation Laboratory	26
Cultural Resource Information Program	28
Preservation Planning	30
Historic Preservation Easement Program	34
State and Federal Project Review	36
Military Monuments and Roadside Historical Markers	38
Jefferson Patterson Park and Museum	40
Public Archeology Programs	43
Maryland Preservation Awards	46

The Maryland Historical Trust Board of Trustees

The Maryland Historical Trust (MHT) is governed by a 15-member Board of Trustees, including the Governor, the Senate President, and the House Speaker or their designees, and 12 members appointed by the Governor. At least two trustees must be qualified with an advanced degree in archeology or a closely related field, and shall have experience in the field of archeology. Of the trustees qualified in the field of archeology, at least one must have experience in the field of submerged archeology and at least one must have experience in the field of terrestrial archeology. The term of a member is four years.

Trustees Appointed by the Governor

Albert L. Feldstein	Allegany County
Sakinah Linder	Baltimore City
Franklin Robinson, Jr.	Charles County
Sarah Kunkel Filkins	Harford County
Margo G. Bailey	Kent County
Samuel J. Parker, Jr. – Treasurer	Prince George’s County
Barbara Paca, Ph.D.	Talbot County
Brien Poffenberger – Chair (June 2018 – May 2019)	Washington County
Laura Davis Mears – Acting Chair (May – June 2019)	Worcester County
Julie Hevener Ernstein, Ph.D.	Terrestrial Archeology
David William Alberg	Submerged Archeology

Ex Officio Members of the Board

The Honorable Robert R. Neall	Representative of the Governor
The Honorable Chris West	Representative of the Senate President
The Honorable Jim Gilchrist	Representative of the Speaker of the House

The Board also includes representatives appointed by the Board from areas of the State not represented by current Board members who participate to the full extent as Board members except that they cannot vote in full meetings of the Board.

Area Representatives

Charles A. Stek	Anne Arundel County
Harry T. Spikes, II	Baltimore City
Martin P. Azola	Baltimore County
Kirsti Uunila	Calvert County
Dean R. Camlin	Carroll County
Joshua D. Brown	Cecil County
G. Bernard Callan	Frederick County
W. Dickerson Charlton	Prince George’s County
Douglass C. Reed	Washington County

Who We Are and How We Work

Founded in 1961, MHT is the state agency dedicated to preserving and interpreting the legacy of Maryland's past. Led by Director and State Historic Preservation Officer Elizabeth Hughes, MHT is governed by a 15-member Board of Trustees. Operating within the Maryland Department of Planning and located in Crownsville, MHT serves as the State Historic Preservation Office, charged with implementing federal preservation programs at the state level.

The Office of Research, Survey, and Registration handles the state's information on historic properties and archeological sites. This office supports new archeological and architectural surveys, maintains the Maryland Inventory of Historic Properties and forwards nominations to the National Park Service's National Register of Historic Places. This office also coordinates and staffs the Historic Markers program and provides funding through the Historic Preservation Non-Capital Grant Program.

The Office of Planning, Education, and Outreach provides planning assistance for local governments and partners with organizations and agencies to produce educational programming, including public archeology. This office offers grants for heritage tourism through the Maryland Heritage Areas program and for planning activities through the Certified Local Government program, and staffs the Governor's Commission on Maryland Military Monuments. MHT also produces the five-year statewide preservation plan.

The Office of Preservation Services includes the Maryland Historic Revitalization Tax Credit Program, African American Heritage Preservation Program, and Historic Preservation Capital Grant and Loan programs. This office also reviews state and federal actions for impacts to historic and cultural resources and manages the state's historic preservation easements. The Maryland Maritime Archeology Program is also housed at MHT.

The Office of Archeology is responsible for studying, promoting, and preserving Maryland's rich archeological heritage. Consisting of both terrestrial and maritime programs, this office conducts research and coordinates public lectures, fieldwork opportunities, and the dissemination of information about Maryland's archeological sites. Archeology personnel and resources are situated within all MHT units to accomplish the work of this office, which also coordinates and staffs the gubernatorial-appointed Maryland Advisory Committee on Archeology.

Located on 560 acres on the Patuxent River in Calvert County, Jefferson Patterson Park and Museum (JPPM) is the state museum of archeology, offering events, tours, lectures, school visits, and workshops related to the site's historic and prehistoric heritage. JPPM is home to the Maryland Archaeological Conservation (MAC) Laboratory, a state-of-the-art facility dedicated to archeological conservation and research.

The Office of Management oversees the administrative functions of the agency and includes the director and deputy director, human resources and personnel management, and budget and grants management.



Maryland's Historic Revitalization Tax Credit Program

Legislative Changes

For more than two decades, tax credits have played a key role in revitalizing Maryland's communities. In FY19, the Maryland General Assembly passed a bill that Governor Hogan signed into law that made changes to the state historic tax credit program effective June 1, 2019, including changing the name of the program from the Maryland Heritage Structure Rehabilitation Tax Credit Program to the Historic Revitalization Tax Credit Program. A change to the small commercial tax credit expanded eligible projects to include rental residential housing, as well as housing units for sale to homeowners.

The law also incentivized the use of the Historic Revitalization Tax Credit Program for competitive commercial and small commercial projects in areas designated as federal "Opportunity Zones." Projects within a Level 1 Opportunity Zone may claim an additional tax credit of 5% (with a maximum award of \$3.15 million) while projects within a Level 2 Opportunity Zone may claim an additional tax credit of 7.5% (with a maximum award of \$3.3 million). Small commercial projects in a Level 1 Opportunity Zone may receive up to \$55,000 in credits, while Level 2 Opportunity Zone projects may receive up to \$60,000.

Competitive Commercial Tax Credits

Each year, owners of income-producing properties can compete for a state income tax credit (capped at \$3 million) of up to 20% of eligible expenses for substantial rehabilitation projects. Projects achieving high-performance buildings or low-income housing may also be eligible for an additional 5% credit. For the FY19 round, 17 applicants sought more than \$30.84 million in tax credits for construction projects with a total estimated cost exceeding \$171 million. MHT awarded just over \$9 million in tax credits for FY19, expected to leverage private investment of more than \$58 million in the projects described below.

Emerson Mansion, Baltimore City (\$1 million awarded)



This large, exuberantly detailed Queen Anne style mansion was built circa 1895 in the fashionable Eutaw Place neighborhood for Captain Issac Emerson, who made his fortune with the invention of a headache powder that he named Bromo-Seltzer. As the neighborhood's residential character changed, the house was converted to office and institutional uses followed by a period of vacancy, which resulted in loss or obstruction of many of the building's highly decorative finishes and features. The mansion's rehabilitation will reactivate this significant property to serve the neighborhood as a community resource center with an early childhood education center, community rooms, and apartments on the upper floors.

Seventh Metro Church, Baltimore City (\$2 million awarded)



The imposing Gothic Revival stone masonry Seventh Metro Church, located on the corner of East North Avenue and St. Paul Street, was constructed in two major phases. The circa 1882 rear section of the building, now called the Chapel (formerly the Immanuel Baptist Church), still contains significant Victorian features, such as decorative wood and plaster work. In 1905, a new building constructed on North Avenue became the main sanctuary space for the congregation. The sanctuary features lancet stained-glass windows, buttresses, and stone spires, and the interior remains largely intact. This rehabilitation project will focus on preserving the structure and restoring the windows and plasterwork, while also converting it into a concert venue and marketplace.

Visitation Frederick, Frederick, Frederick County (\$3 million awarded)



The Visitation Frederick campus, centered around an interior courtyard overlooked by covered balconies, includes several buildings that total approximately 55,000 square feet. The main building was constructed in 1824 as a monastery for the Sisters of Charity, who established one of Frederick's first schools for young girls and built several additions throughout the mid-19th century. Visitation was run by cloistered women in the Order of the Visitation, a Roman Catholic sisterhood, from 1847-2005 and then as a Catholic girls' elementary school until 2016. During the Civil War, a portion of the monastery and school building was used by the Union

Army as a hospital following the Battle of Antietam. This project will convert the school and monastery into a boutique hotel, restaurant, and wedding venue that will also feature apartments and the construction of new townhomes.

American Ice Company, Baltimore City (\$2,449,260 awarded)



Constructed in 1911 as an ice plant to replace the supply of natural ice with a manufactured product, the American Ice Company building was one of the largest and most modern plants of its kind in Maryland. Although ownership changed hands, the building continuously operated as an ice manufacturing plant from 1911 to 2004, when a fire significantly damaged the warehouse and loading areas at the rear of the historic building. The building reflects the adaptation of a large industrial enterprise to a changing technological and social landscape: over the course of the 20th century, the site saw several phases of additions as the industry changed. The fire and the abandonment

of the building in the early 21st century left the ice plant damaged and endangered. This project will embrace the industrial character of the ice plant buildings while adapting its spaces to multiple new uses as an art gallery, restaurant, and event space.

Ox Fibre Brush Company, Frederick, Frederick County (\$632,840 awarded)



The original portion of the Ox Fibre Brush Company factory was constructed in 1892 to house a growing brush making firm that continued to expand with new additions into the 1930s. This company is a good example of the changes in manufacturing brought on by the introduction of railroad connections that allowed small industrial enterprises to rapidly expand into large scale manufacturing firms. At the peak of its operations in the 1930s and '40s, the factory produced more than 24 million brushes for sale annually. The plant closed in 1966 when the company relocated out of state, and the complex

has since served as the home of Goodwill Industries. Rehabilitation of the complex will preserve the historic character of the brick factory buildings while converting the spaces for use as loft apartments.

Small Commercial Tax Credits

In 2014, Maryland expanded the program to include a new \$4 million small commercial tax credit for modest rehabilitation projects. In FY19, the Maryland Historic Revitalization Tax Credit Program approved 13 proposed small commercial projects worth more than \$455,700 in tax credits.

Homeowner Tax Credits

In Maryland, homeowners can earn a state income tax credit equal to 20% of qualified rehabilitation expenses for projects costing \$5,000 or more. In FY19, the Maryland Historic Revitalization Tax Credit Program approved 205 proposed residential projects worth an estimated \$2,242,800 in tax credits.

Success Story: Historic Tax Credits for Outbuildings

Homeowner tax credits are not limited to a single building. When a house's historic outbuildings, such as garages, carriage houses, sheds, barns, corn cribs, or spring houses, contribute to its historic designation or to a larger historic district, those outbuildings may also be eligible for the tax credit. Across Maryland, homeowners have brought numerous outbuildings back to life and saved them from deterioration and collapse through the tax credit program.

This large Mediterranean Revival style carriage house in the Chevy Chase Village Historic District (Montgomery County) had once been altered and used for storage. The owners of the property rehabilitated the carriage house for living space, installing historically appropriate carriage-style garage doors to restore the appearance of the outbuilding.



Experiencing structural failure and significant deterioration, this historic garage in the Mount Rainier Historic District (Prince George's County) underwent a significant restoration and rehabilitation. The building was lifted to repair the rotten sill plate and foundation, then lowered back onto the foundation.



To address warped exterior walls, the framing was repaired and the walls realigned. A fresh coat of paint added the final touch, bringing this outbuilding back to life after the threat of collapse.

The small shed located in the Bare Hills Historic District (Baltimore County) had a leaking roof and rotting board and batten siding, causing the building to lean. Replacement of the roof and damaged and missing portions of the siding, along with a new coat of paint and repaired double doors, renewed the shed's historic appearance and integrity.



Located in the Doub's Mill Historic District (Washington County), this property retains a number of historic outbuildings, including a corn crib, barn, and spring house. The corn crib had a failing and rotten foundation and sill plate, the wood siding on the barn was experiencing paint failure and rot, and the spring house had significant mortar loss and wear. A project stabilized the corn crib foundation, sill plate and piers, and repaired and painted the wood siding on the barn. At the spring house, the most stunning of the three outbuildings, the stone was carefully cleaned and mortar joints repointed. The damaged metal roof was also replaced in-kind to allow for continued protection of the building.



Historic Preservation Capital Grant Program

MHT's Historic Preservation Capital Grant Program promotes the acquisition, restoration, and rehabilitation of historic properties in Maryland. Nonprofit organizations, government entities, business organizations, and individuals may apply for funds to rehabilitate, restore, or acquire historic buildings. Nonprofit organizations and government entities are also eligible to apply for pre-development costs that will lead to a construction project. Properties must be listed in or eligible for the National Register of Historic Places, either individually or as contributing structures within a district. A preservation easement is required for all assisted properties. For FY19, the Historic Preservation Capital Grant Program received an appropriation of \$600,000.

FY19 Grants

Westminster Cemetery, Baltimore City (\$100,000)

The Westminster Cemetery is an important cultural landscape that illustrates changing burial customs and attitudes toward death, as well as the personal toll of infant and childhood mortality, since its founding in the late 18th century. It is also the burial place of several notable people, including Edgar Allan Poe. The grant will help the Westminster Preservation Trust restore the c. 1815 cemetery wall and entryway, which features a Greek Revival gate and neo-Egyptian sandstone posts.

USCGC TANEY, Baltimore City (\$29,000)

Commissioned in 1936, U.S. Coast Guard Cutter TANEY had over 50 years in active service. It is the only American fighting ship afloat that fought during the attack on Pearl Harbor in 1941. It is currently used as a memorial and museum ship. The TANEY is currently scheduled for dry docking in the fall of 2019, and grant funds awarded to Historic Ships in Baltimore, Inc. will be used to make repairs to corroded areas of rooms that flank the ship's hull.

Iron Hill Cut Jasper Quarry Archaeological Preserve, Cecil County (\$50,000)

Likely the only remaining Native American quarry of its type in Maryland, the National Register-listed Iron Hill Cut Jasper Quarry provided prized jasper used in flint knapping. The archeological site was part of a larger parcel slated for residential development, but it remains undisturbed, offering significant research potential. Grant funds awarded to the Archaeological Conservancy will assist in the acquisition of the site for conservation.

Aberdeen B&O Railroad Station, Harford County (\$100,000)

The Aberdeen Baltimore & Ohio Station was constructed in 1885 according to a standard design created by Frank H. Furness for the railroad and is the last of this design still standing. The canning industry depended on the station for shipping products to Baltimore and nationwide. The grant to the Aberdeen Room Archives and Museum, Inc. will fund roof replacement and permanent stabilization of the building.

Evergreen House Museum, Allegany County (\$100,000)

One of 14 historic buildings on a 167-acre parcel, the Evergreen House Museum consists of an original c. 1780 stone cellar, a two-story Federal-style addition from the 1820s, and a late 19th century building with Victorian embellishments, including an unusual roof with crow's-foot stamped metal shingles, which replaced the original log structure. The roof has reached the end of its useful life, and grant funds will help the Evergreen Heritage Center Foundation, Inc. replace it with matching metal shingles.

Hays House, Harford County (\$15,000)

Constructed c. 1788, the Hays House has remained largely unaltered since the time of its original owner, Thomas A. Hays, the cartographer of the earliest known map of Bel Air. As the town's oldest private residence, Hays House now serves as the headquarters of the Historical Society of Harford County and as a living history museum. The grant will fund the repair of the property's unique hand-riven wood siding.

Ebenezer A.M.E. Church and Parish House, Baltimore City (\$100,000)

Built in 1865 for a congregation organized in 1836, Ebenezer A.M.E. Church in Federal Hill is thought to be the oldest standing church in Baltimore that was erected by African Americans and continuously occupied by the descendants of the same congregation. Grant funds will help Ebenezer Kingdom Builders Inc. replace the slate roof, which has reached the end of its useful life.

Beatty-Cramer House, Frederick County (\$16,000)

In the 1860s, property owners joined an existing 18th century saltbox-style structure to a new east wing, creating the Beatty-Cramer House. This unique building features exposed and decorated interior timber framing and showcases H-bent construction, a method characteristic of New York's Hudson Valley. The grant to the Frederick County Landmarks Foundation, Inc. will fund exterior work to prevent water intrusion, including repairs to exterior walls and the roofs of the porches.

Chesapeake Lodge No. 147, Somerset County (\$30,000)

Constructed in 1926, the neoclassical Chesapeake Masonic Lodge No. 147 features a commanding temple-front portico. The lodge is associated with Crisfield's heyday as one of Maryland's largest seafood producing centers and an important maritime commercial port. Grant funding to the Lost Towns Project, Inc. will help repair and prevent water damage to the building.

Fairgrounds Entrance Building & Keeper's Residence, Washington County (\$60,000)

The Fairgrounds Entrance Building, constructed c. 1913, and the Keeper's Residence, constructed sometime between 1891-1907, historically functioned as the major gateway to the Hagerstown Fair, which grew from a small-scale, rural venture to a nationally known exhibition and entertainment attraction. The entrance building may be the last of its kind in Maryland. The grant to the City of Hagerstown will fund repairs to the roof, windows, and structure.

Success Story: Thomas Point Shoal Lighthouse (Anne Arundel County)

Built in 1875, this National Historic Landmark is a one and a half story hexagonal frame lighthouse supported by nine steel frame screw piles. It is the only intact cottage-style lighthouse in its original location still used as a navigation aid today. The United States Lighthouse Society, Inc. has hired a highly specialized marine structures contracting firm to repair and replace steel structural elements that have been corroded by contact with the saltwater. Since FY06, this project has received three MHT Capital Grants totalling \$200,000.



Maryland Heritage Areas Program

Governed by the Maryland Heritage Areas Authority (MHAA) and administered by MHT, the Maryland Heritage Areas Program provides targeted financial and technical assistance within 13 locally-designated Heritage Areas, each of which represents unique aspects of Maryland's historic, natural, and cultural character. In Heritage Areas, individuals, businesses, nonprofits, and governments form partnerships to preserve the best of Maryland's historic sites and towns, unspoiled natural landscapes, and enduring cultural traditions.

In FY19, 170 grant applications were submitted, totaling \$7,277,876 in requests for heritage tourism projects and activities. MHAA awarded \$4,998,692 to 113 projects that foster economic development through heritage tourism, leveraging \$4,419,472 in non-state matching support. This was the first year the MHAA appropriation was increased to \$6 million, providing nearly \$5.1 million for MHAA grants, of which \$100,000 was reserved for emergency grant requests. In FY19, MHAA awarded grants to help support the operations of the 13 Heritage Area management entities, totaling \$1,213,960, as well as four grants for marketing, totalling \$187,989, in Baltimore City and Allegany, Anne Arundel, and Garrett counties.

In years past, MHAA has provided up to \$15,000 annually to individual Heritage Areas for locally-administered mini-grant programs. Starting in FY19, MHAA increased this funding level and instituted a "Block Grant" program, making up to \$25,000 available annually to each Heritage Area for mini-grant programs. Since these mini-grant programs also require a dollar-for-dollar match, MHAA's increased funding generates additional local investment. Seven management entities received Block Grants to support mini-grants for local projects within their Heritage Areas, totaling \$170,000. The remaining six Heritage Areas support mini-grants through their management grants.

Community members celebrate one of Baltimore's oldest neighborhoods at the Jonestown Festival, funded in part by a Maryland Heritage Areas Authority FY19 Block Grant. Photo by Will Kirk, courtesy of the Jewish Museum of Maryland



FY19 Maryland Heritage Areas Authority Grants

County	Applicant	Project	Award
Allegany	Allegany Museum	Frontier Trail: Cumberland's Heritage Festival	\$16,000
Allegany	Canal Place Preservation and Development Authority	Cumberland River Park	\$30,000
Anne Arundel	Annapolis Maritime Museum, Inc.	New Permanent Exhibit - Final Planning Phase	\$50,000
Anne Arundel	Captain Avery Museum, Inc.	Smart, Safe Public Parking	\$22,000
Anne Arundel	Hammond-Harwood House Association, Inc.	Creating 18th Century Curb Appeal: A Cultural Landscape Study for Hammond-Harwood House	\$10,000
Anne Arundel	Historic Annapolis, Inc.	Capital Masonry Repairs at 99 Main Street	\$25,000
Anne Arundel	London Town Foundation	William Brown House Restoration for Improved Interpretation and Visitor Access	\$20,000
Anne Arundel	Maryland Hall for the Creative Arts, Inc.	Improved Public Access for the Arts--Wayfinding and Signage	\$50,000
Anne Arundel	Smithsonian Environmental Research Center	Sellman House Building Envelope and Interior: Restoration of Windows, Doors and Marble Fireplace Mantles	\$100,000
Baltimore City	Baltimore Architecture Foundation, Inc.	Doors Open Baltimore 2018	\$10,650
Baltimore City	Baltimore Children's Museum (Port Discovery Children's Museum)	Port Discovery - Port of Baltimore Exhibit - Construction Phase, Fish Market and Cargo & Containers	\$100,000
Baltimore City	Baltimore Heritage Area Association, Inc.	Visitor and Educational Support for Maryland Fleet Week and Air Show Baltimore	\$50,000
Baltimore City	Baltimore Streetcar Museum, Inc.	Baltimore Streetcar Museum Upgrade, Phase 2: The Transformation Begins	\$50,000
Baltimore City	Fell's Point Main Street	Signage Celebrating Historic Fell's Point	\$17,180
Baltimore City	Historic Ships in Baltimore, Inc.	Historic Ships in Baltimore Interactive Educational Mobile "App"	\$25,000
Baltimore City	Historic Ships in Baltimore, Inc.	USCGC TANEY Critical Dry Docking	\$99,700
Baltimore City	Le Mondo Inc.	408-412 N Howard Street Stabilization	\$100,000
Baltimore City	Living Classrooms Foundation	Lady Maryland 33-Year Refit	\$58,162
Baltimore City	Maryland Historical Society	Campus Design Plan Phase II	\$100,000
Baltimore City	Peale Center for Baltimore History and Architecture	"The Colored School and Early African American Education in Baltimore" Exhibit	\$25,000
Baltimore City	Poe Baltimore	The International Edgar Allan Poe Festival & Awards	\$26,100
Baltimore County	Baltimore Museum of Industry, Inc.	Lighting the Historic Crane at the BMI	\$78,265
Baltimore County	Oella Historical Society, Inc.	Oella Archiving and Oral History Project	\$11,177
Calvert	Ann's Circle, Inc.	Annmarie Sculpture Garden Tree-mendous Nature Trail & Pavilion	\$72,577
Calvert	Calvert Marine Museum Society, Inc.	"Solomons, a Water Community" Exhibit	\$50,000
Calvert	Calvert Nature Society, Inc.	Assessing a Cypress Barn	\$20,000
Calvert	Friends of the Jefferson Patterson Park and Museum, Inc.	Interactive & Educational components for Smithsonian's H2O Today Exhibition	\$10,000
Caroline	Adkins Arboretum, Ltd.	Destination Meadow! Trail	\$34,950
Caroline	Caroline County Council of Arts, Inc.	Hardee House Acquisition	\$62,500
Carroll	Carroll County Farm Museum	Carroll County Farm Museum's Hoff Log Barn - Enhanced Signage and Oxen Exhibit	\$10,275
Carroll	Historical Society of Carroll County	"Carroll County Legacy: In Context" Exhibit at Cockey's	\$50,000
Carroll	Town of Sykesville, Maryland	Gate House Museum Rehabilitation	\$18,000

County	Applicant	Project	Award
Carroll	The Union Mills Homestead Foundation, Inc.	Historic Resource Study for Union Mills	\$24,159
Cecil	Town of Port Deposit	Adams Hall/Town Hall Repair and Restoration	\$42,045
Charles	Friends of Smallwood State Park, Inc.	Condition Assessment of the John Grinder House	\$12,500
Dorchester	Cambridge Main Street, Inc.	Growth of Cambridge Dorchester Heritage Festivals	\$30,000
Dorchester	City of Cambridge	High Street Streetscape Improvement Project	\$100,000
Dorchester	Dorchester County Historical Society, Inc.	Meredith House Frame Addition Repairs	\$6,500
Dorchester	County Council of Dorchester County	The Economic, Community and Business Impact of the Harriet Tubman Experience	\$10,000
Dorchester	County Council of Dorchester County	Smithsonian Traveling Exhibit - WaterWays	\$5,000
Dorchester	County Council of Dorchester County	Cannery Park Rail to Trail Conversion	\$50,000
Dorchester	Dorchester Skipjack Committee, Inc.	Skipjack Nathan Restoration Project	\$30,000
Dorchester	Town of East New Market	Rehabilitation of East New Market Train Station Interior	\$42,000
Dorchester	Good Shepherd Association	Maces Lane High School African American Interpretive Planning	\$15,000
Frederick	Catoctin Furnace Historical Society, Inc.	Museum of the Ironworker Building Renovation Phase 2	\$43,600
Frederick	Town of Emmitsburg	Emmitsburg Main Street Wayside Exhibits	\$9,000
Frederick	Main Street Middletown, Inc.	Acquisition of 19-21 West Main Street	\$37,860
Frederick	Monocacy National Battlefield Foundation, Inc.	Monocacy Landing-Launch Into History-Monocacy NB River Launch and Landing Facility	\$12,500
Frederick	National Museum of Civil War Medicine, Inc.	Video Production - Collections Video and Orientation Video	\$23,343
Frederick	National Park Service-Catoctin Mountain Park	New Interpretive Exhibits for the Catoctin Mountain Park Visitor Center	\$29,500
Frederick	Town of Thurmont	Wayfinding Signage	\$12,300
Garrett	Garrett County Government	Do the LOOP - Otto Lane to New Germany Trail Segment	\$100,000
Garrett	Garrett County Trails, Inc.	Trail Feasibility Study of the Casselman River (Jennings Brothers) Railroad	\$50,000
Garrett	Garrett Lakes Arts Festival, Inc.	"Maryland Chautauqua: Yesterday and Today" Event	\$12,862
Harford	Chesapeake Heritage Conservancy, Inc.	Interpretative Programing and Materials for the Skipjack Martha Lewis	\$26,350
Harford	The Friends of Concord Point Lighthouse, Inc.	Making Concord Point Keeper's House Shine	\$25,752
Harford	Havre de Grace Alliance, Inc.	HDG Historical Murals Project	\$14,000
Harford	City of Havre de Grace	Joe K Trail Pedestrian Walkway at North Park	\$80,000
Howard	Howard County Rec & Parks Headquarters	Restoration of the Ellicott City Station Caboose (Interior & Exterior)	\$65,685
Howard	Howard County Rec & Parks Headquarters	Freight Room Diorama Artifact Restoration and Interpretive Reframe Plans and Drawings	\$15,000
Kent	Kent County Arts Council, Inc.	Raimond Arts Building Renovation	\$100,000
Montgomery	Town of Brookeville	Quakers and African-Americans in Early Brookeville: One-Room Schoolhouse Rehabilitation	\$8,800

County	Applicant	Project	Award
Montgomery	C & O Canal Trust, Inc.	Canal Quarters Program: Interpretation and Exhibits for Swains Lockhouse	\$11,500
Montgomery	Glen Echo Park Partnership for Arts and Culture, Inc.	Spanish Ballroom Floor Assessment	\$5,703
Montgomery	Montgomery County Parks Foundation	Josiah Henson Park Museum Exhibits	\$50,000
Montgomery	National Capital Historical Museum of Transportation, Inc. (National Capital Trolley Museum)	"Streetcars: From Horses to Electric" Exhibit	\$10,000
Montgomery	Pleasant View United Methodist Church	Stabilization of the Buildings at Pleasant View Historic Site	\$100,000
Prince George's	Anacostia Trails Heritage Area, Inc.	Prince George's County Civil Rights Trail	\$40,000
Prince George's	Anacostia Watershed Society	Anacostia Watershed Field Guide & Interpretative Signage	\$10,000
Prince George's	City of Greenbelt	Greenbelt Community Center - Statues Cleaning	\$29,500
Prince George's	City of Hyattsville	Getting Around Town: a Cycling and Wayfinding Plan for Hyattsville	\$29,339
Prince George's	Town of North Brentwood	4510 41st Avenue, Outdoor Pavilion Construction	\$25,500
Prince George's	Pyramid Atlantic, Inc.	Pyramid Atlantic Arcade Building Facility Improvements	\$16,200
Queen Anne's	Friends of Wye Mill	2018 Mill Stabilization Project	\$20,000
Queen Anne's	Kennard Alumni Association, Inc.	Kennard High School African American History Museum Exhibit	\$20,000
Queen Anne's	The Queen Anne's County Historical Society, Inc.	Tucker House HVAC Project	\$21,000
St. Mary's	Patuxent River Naval Air Museum Association, Inc.	Exhibits Phase Two	\$48,080
St. Mary's	St. Mary's College of Maryland Foundation, Inc.	"Commemorating Our Shared History: Slavery in Southern Maryland" Commemorative Exhibit	\$30,000
Talbot	Chesapeake Bay Maritime Museum	Restoration of the Historic Tug Delaware	\$80,000
Talbot	Talbot County Government	Frederick Douglass Park on the Tuckahoe Master & Interpretive Plans	\$50,000
Washington	Save Historic Antietam Foundation, Inc	Poffenberger Tract Restoration	\$17,500
Washington	Washington County Museum of Fine Arts	American Art from the Colonial Era to the Gilded Age and Smith-Mason-Thieblot Galleries Refurbishment	\$50,850
Wicomico	Allen Historical Society, Inc.	Refurbishment of the Huffington-Pollitt House, Museum, & Cultural Center	\$23,679
Wicomico	City of Salisbury	Funding the Folklife Festival	\$50,000
Worcester	Assateague Island Alliance, Inc.	A Fed Horse Is a Dead Horse: a Project to Protect Assateague's Wild Horses	\$50,000
Worcester	Delmarva Discovery Center & Museum, Inc.	Increasing Universal Accessibility	\$100,000
Worcester	Julia A. Purnell Museum	Building on the Banks Exhibit	\$50,000
Worcester	Lower Shore Land Trust, Inc.	Lower Shore Conservation and Heritage Center Design and Exhibit Installation	\$41,600
Worcester	Rackliffe House Trust, Inc.	Rackliffe House Trust Geophysical Archeological Survey	\$10,000

Success Story: Programming for Children and Families

In FY19, MHAA provided a matching grant of \$100,000 to help construct a hands-on exhibit at the Port Discovery Children’s Museum, located in the Baltimore National Heritage Area. The museum occupies the c. 1906 building that previously served as the Baltimore Wholesale Fish Market, which served as a central market since 1773. Opened to visitors in June of 2019, the new exhibit, called **The Port**, allows children to explore a life-size cargo ship, operate a gantry crane, and learn how to navigate a ship. The Port connects children with the history of the Port of Baltimore, helping to bolster pride in the city’s important role in international trade.



The oxen housed at the Carroll County Farm Museum in the Heart of the Civil War Heritage Area benefited from an FY19 MHAA grant to enhance the Museum’s oxen exhibit and programming. *Photo courtesy of Carroll County Farm Museum*



Deborah Gangloff, Beth Denniston, and Carol Benson (left to right) participate in a ribbon-cutting for the Captain Avery Museum’s newly expanded parking lot, funded in part by an MHAA grant. *Photo courtesy of the Captain Avery Museum*

At the Carroll County Farm Museum, MHAA grant funds have helped update and enhance the popular oxen exhibit. Every year from spring to fall, the museum is visited by a pair of working Red Devon oxen, known to staff and visitors as Jack and Jim. The grant project included updating the exhibit signage in the Hoff Barn and purchasing supplies for the oxen themselves. With the \$10,275 MHAA grant, the oxen have a new larger yoke, replacing one they had outgrown, and a hay rack located inside the barn, which will help extend their season at the museum by keeping their hay dry as the weather turns colder.

MHAA Grant Project Highlights



The Kennard Alumni Association received FY 2019 MHAA funds to develop and install exhibits, including the one pictured here, at the Kennard High School African American History Museum. *Photo courtesy of the Kennard Alumni Association*



Allegheny County Tourism staff, Ashli Workman and Jessica Palumbo (left to right), and Steve Chandler of Chandlerthinks LLC led the rebranding initiative for Passages of the Western Potomac Heritage Area, which was previously known as the Canal Place Heritage Area. *Photo courtesy of Allegheny County Tourism*



In FY 2019, MHAA funded restoration work for the Skipjack Nathan – pictured here – in the Heart of Chesapeake Country Heritage Area. *Photo courtesy of the Dorchester Skipjack Committee*

Archeological Research and Survey

Through archeological research and survey, MHT helps identify and document important historic and prehistoric sites through its terrestrial and maritime archeology programs. In FY19, MHT added 145 terrestrial archeological site and one maritime archeological site, as well as 87 terrestrial site updates, to the Maryland Inventory of Historic Properties. A total of 43 archeological survey reports were accessioned into the MHT Library, covering 1,874 acres.

Historic Preservation Non-Capital Grant Funds for Archeological Research and Survey

In FY19, the Historic Preservation Non-Capital Grant Program provided \$109,000 to archeological research and survey projects.



Researching the Jug Bay Complex, Anne Arundel and Prince George's Counties (\$43,000)

The Lost Towns Project will collaborate with the Maryland-National Capital Park and Planning Commission and Washington College to survey and evaluate the prehistoric archeological resources within the Jug Bay Complex in both Anne Arundel and Prince George's counties. The aim of the survey is to obtain baseline data that can be used to support a National Register nomination for the Jug Bay Complex in future years.



Historic Sotterley Survey, St. Mary's County (\$30,000)

Funding will support an archeological survey on the Historic Sotterley property, a National Historic Landmark, to assess, expand, and update its inventory of archeological resources. Historic Sotterley has acquired more property since the last archeological survey, with 52 acres undocumented.



2019 Tyler Bastian Field Session in Maryland Archeology, Prince George's County (\$15,000)

Grant funding to the Archeological Society of Maryland supported the 2019 Tyler Bastian Field Session in Maryland archeology held at the Billingsley site near Upper Marlboro. Staff identified Billingsley as an area of interest while carrying out survey work on state-owned lands using MHT's remote sensing equipment. The 2019 field session focused on testing the results of the remote sensing surveys to examine and assess a potential Native American occupation at the site. For more information about fieldwork at Billingsley, please see the section on "Public Archeology Programs" and "Success Story: MHT Expands its Remote Sensing Capabilities."



Coastal Shoreline Archeological Survey, Dorchester County (\$15,000)

Funds helped the Chesapeake Bay Watershed Archaeological Research Foundation conduct a coastal shoreline archeological survey within the Fishing Bay watershed and Nanticoke River mouth in southern Dorchester County. Survey was carried out along 86 linear miles of coastline to update existing site records and record newly discovered cultural resources.



Survey and Interpretation at John Wesley Methodist Episcopal Church, Talbot County (\$6,000)

John Wesley Preservation Society will undertake a ground-penetrating radar survey for planning purposes prior to construction at the John Wesley Methodist Episcopal Church. In addition, the grant funded the development and installation of interpretive signage, as well as the development of a virtual tour and oral history website about the history of the church.

The Archaeology of Colonial Maryland

Five Essays by Scholars of the Early Province



Pictured here is the cover for the volume *The Archaeology of Colonial Maryland: Five Essays by Scholars of the Early Province*. MHT Chief of Archeology Dr. Matthew D. McKnight edited five chapters by contributing scholars. In addition, working through the MHT Press, MHT staff evaluated and selected contractors to provide book design and print services, then collaborated with the selected vendors in the layout process. This heavily illustrated volume is available to purchase from MHT Press.



EDITED BY

Matthew D. McKnight

Maryland Historical Trust



WITH CONTRIBUTIONS BY

Henry M. Miller, Julia A. King, Al Luckenbach, Michael T. Lucas, Scott M. Strickland

Maritime Heritage Grants

MHT provides oversight and manages funding from the National Park Service's Maritime Heritage Grant Program. In FY19, eight grants were managed, including: Phillips Wharf Environmental Center (\$49,800, completed), Annapolis Maritime Museum (\$37,000), Port Discovery Children's Museum (\$50,000, completed), Liberty Ship S.S. John W. Brown (\$178,700 and \$200,000 for two grants, one completed), Living Classrooms U.S. Coast Guard Cutter TANEY (\$149,670), Chesapeake Bay Maritime Museum Bugeye Edna Lockwood (\$45,850), and Historic St. Mary's City Dove Wharf (\$50,000).

Archeological Research and Survey Activities

In addition to routine site inspections to assist government agencies in compliance with historic preservation laws, the Maryland Maritime Archeology Program completed research and produced a report related to archeological survey of areas within and adjacent to Janes Island State Park in Somerset County. This work was supported by a grant from the National Park Service's Hurricane Sandy Disaster Relief Fund and in-kind contributions by the Maryland Department of Natural Resources. The project was a collaborative effort between MHT's terrestrial and underwater archeologists, and resulted in an updated inventory of prehistoric, historic, and maritime-related archeological sites impacted by erosion and storm damage, refinement of existing records, and identification of areas with potential to contain additional archeological resources. The information gathered and data products produced will be a valuable resource for management and interpretation.

Archeological Research Permits

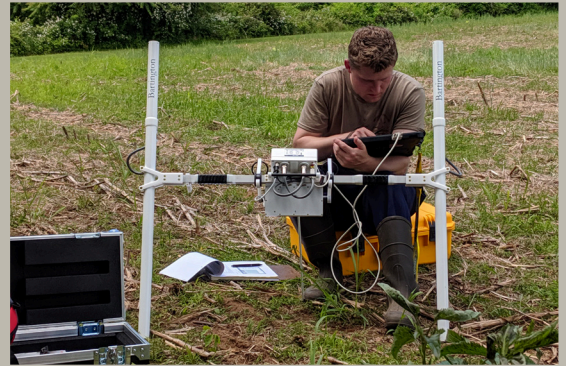
Staff assisted five state agencies by issuing 11 terrestrial archeology permits in FY19 for archeological investigations on lands they administer. Investigations on land held by the Maryland Department of Natural Resources included work associated with the Point Lookout Lighthouse restoration in St. Mary's County, wetland creation at Cedar Point Wildlife Management Area, and research archeology at the Elkridge site in Patapsco Valley State Park. St. Mary's College of Maryland received permits associated with sidewalk projects along Trinity Church Road and the North Field, as well as the Maryland Heritage Interpretive Center/Anne Arundel Hall replacement project. St. Mary's College also received a permit to conduct its annual archeological field school in the Calvert House yards. The Maryland Transportation Authority received permits to conduct an archeological survey associated with the development of the Raphael Road/Rutkowski property and to evaluate an identified archeological site. No new permit applications or renewal requests for maritime archeology were received during FY19.



Success Story: MHT Expands its Remote Sensing Capabilities



In FY18, MHT took its first steps into the arena of terrestrial remote sensing with the acquisition of a magnetic susceptibility meter. In FY19, MHT significantly expanded those capabilities with the purchase of a fluxgate gradiometer and a ground-penetrating radar (GPR) unit. While the magnetic susceptibility meter can be rapidly deployed over a large survey area to identify sites and locate resource boundaries, the fluxgate gradiometer and GPR can be used in smaller areas to identify specific features of interest for ground-truthing. The gradiometer was used in early May 2019 to locate several prehistoric pit features, which were investigated and excavated during the 2019 Field Session in Maryland Archeology (see Public Archeology Programs). The GPR will be put into service in FY20 once equipment training is complete. MHT hopes to make these tools available to assist in archeological research and is currently developing guidelines to govern this work.



Success Story: Archeological Survey of State-Owned Lands



In FY19, MHT embarked on a comprehensive survey of Maryland Department of Natural Resources owned or controlled lands to identify the full range of archeological sites located on such properties. Staff carried out survey work at Smallwood State Park (Charles County), Wye Island Natural Resource Management Area (Queen Anne's County), the Billingsley Point property (Prince George's County), and Fort Frederick State Park (Washington County). While no new cultural resources were identified on two of the subject properties, magnetic susceptibility survey at Billingsley refined site boundaries and led to further work during the 2019 field session, and ground-truthing of LiDAR anomalies with park rangers at Fort Frederick led to the identification of a possible early road trace and facilities associated with a Civilian Conservation Corps encampment.



African American Heritage Preservation Program

The African American Heritage Preservation Program encourages the preservation of buildings, sites, and communities of historical and cultural significance to the African American experience in Maryland. Launched in 2010 and permanently reauthorized in 2015, the program is jointly sponsored by the Maryland Commission on African American History and Culture (MCAAHC) and MHT. Of 35 eligible project proposals requesting \$3.041 million for FY19, the commission allocated \$1 million to 12 projects, which were approved by the MHT Board and the Secretary of Planning and announced in December 2018.

Success Story: Brome Plantation Slave Quarter (St. Mary's County)

The Brome Plantation Slave Quarter, a rare example of the wooden dwellings used to house enslaved people in the Chesapeake Bay region, has been the subject of intensive archeological study. African Americans lived in the house before, during, and after the Civil War. This \$20,000 AAHPP grant project resulted in the rehabilitation of the building, returning it to a three-room interpretive structure, with rooms representing the era of slavery, the era immediately after Emancipation, and the occupancy by tenant farmers during the 20th century. The building is one of the collection of historic and reconstructed buildings open to the public in Historic St. Mary's City.



Success Story: Kennard High School and African American Cultural Center (Queen Anne's County)

Constructed in 1936, Kennard High School was the only secondary school for African American children in Queen Anne's County until it closed in 1966. With funds from multiple sources (three AAHPP grants totalling \$280,000; two MHAA Capital Grants totalling \$118,000; and one MHT Capital Grant for \$20,000), a multi-year capital project to rehabilitate the school for use as a community center was largely completed in 2016, with work on permanent exhibits continuing after that point. The Kennard Alumni Association held its grand opening in early 2019, showcasing both the new exhibit spaces and the publicly available event space.



FY19 AAHPP Grant Awards



Bazzel Church, Dorchester County (\$55,121)

The Friends of Stanley Institute, Inc. received funding for the initial stabilization of the foundation, walls and roof structure of Bazzel Church, a vernacular Gothic Revival-style church dating to the late-19th or early 20th century. Located in Bucktown, the church stands on the site of an earlier 1876 chapel where Harriet Tubman's family members reportedly worshipped.



Asbury Methodist Episcopal Church, Talbot County (\$100,000)

Funds awarded to Historic Easton, Inc. will support structural repairs and interior finishes to the first floor fellowship hall of Asbury Methodist Episcopal Church, the oldest African American church in Easton and the second oldest in Talbot County. Dedicated by Frederick Douglass in 1878, the church building served as a temporary high school for black students in the 1930s and is now a community center for a historically African American enclave known as "The Hill."



Button Farm, Montgomery County (\$46,000)

The grant to Menare Foundation, Inc. will support the stabilization of the walls, roof, and foundation of the barn at Button Farm, which occupies 40 acres of the 6,000-acre Seneca Creek State Park, and has extant agricultural buildings dating from 1880 to 1920. Constructed c. 1880, the barn served as a dairy barn through the mid-20th century and will be adapted for interpretation in the future.



Laurel Grove Road School, Caroline County (\$100,000)

Funding will help the Community Civic League of Federalsburg replace the windows, HVAC, and siding, as well as improve interior finishes and site grading, at the Laurel Grove Road School, originally constructed in 1918 as part of the Rosenwald School initiative and in use until desegregation in 1964. Today, the building is a multipurpose community resource center.



Williams Schoolhouse (Fort Frederick Colored Schoolhouse), Washington County (\$10,000)

After Nathan Williams, an African American farmer, purchased property including Fort Frederick in 1857 and developed the property into a productive farm, the Williams family established a school for local black children. Washington County purchased land from the family and in 1899 constructed the Williams Schoolhouse, which operated until 1914. The Maryland Park Service (Department of Natural Resources) will utilize funding to restore the schoolhouse, now located in Fort Frederick State Park, to its original appearance.



Brownsville Monument, Allegany County (\$4,500)

Frostburg State University will install an interpretive monument describing the historic significance of the African American community of Brownsville, which was established in 1866 and displaced in 1926 for the expansion of the university. The state compensated homeowners \$10 for their houses, and residents who moved to an adjoining area were displaced once again in the 1950s for another university expansion. Today, only two buildings remain.

Havre de Grace Colored School, Harford County (\$100,000)

Community Projects of Havre de Grace, Inc., received funding to support accessibility improvements and waterproofing of the basement of the Havre de Grace Colored School. The school was originally constructed in 1910 as a two-room wood-frame primary school for black children. The 1930 four-room brick addition also served as the first public high school for black students in Harford County.



Maynard-Burgess House, Anne Arundel County (\$100,000)

The City of Annapolis will undertake interior structural repairs and finishes, as well as the construction of a bathroom addition, in the 19th century Maynard-Burgess House, which has long-term associations with two black Annapolis families. The first floor of the house, which offers important insights into African Americans' lives before and after the Civil War, will be opened to the public for interpretive purposes and office space.



Samuel and Ida Torsell Mini-Museum, Baltimore County (\$100,000)

Grace A.M.E. Community Development Corporation will make improvements to the Samuel and Ida Torsell Mini-Museum in the Winters Lane National Register Historic District, one of the largest and most intact historic African American neighborhoods in Baltimore County. From the 1920s to the 1940s, Mr. Torsell produced a newsletter that provided African American entrepreneurs with a means of advertising their goods and services, while Mrs. Torsell was the organist and pianist for the local church.



Sotterley Plantation, St. Mary's County (\$46,000)

This award will fund mapping of the cemetery of Sotterley's enslaved community and construct trails and interpretive signs. Dating to 1703, Sotterley Plantation is a National Historic Landmark and is the only Tidewater plantation in Maryland that is open to the public, with more than 20 original buildings spanning its 300-year evolution.



St. James Methodist Episcopal Church, Somerset County (\$100,000)

Funds will help The Oriole Historical Society, Inc. with window and door repair as well as interior plaster and finishes at St. James Methodist Episcopal Church, built by African American carpenters and shipbuilders in 1885. St. James Church, which has remained largely intact since the early 20th century, will be converted to a meeting place and community center.



St. Paul Church, Caroline County (\$100,000)

Funding will support the stabilization of St. Paul Church, one of the earliest African American churches in Caroline County, with associated burials dating to at least the 1840s. The church will be converted into a center for community education and awareness of African American culture in the 19th and 20th centuries.



Architectural Research and Survey

Through architectural research and survey, MHT helps to identify important historic properties and develop a detailed record of their past and present appearance, history, and significance. This documentation informs decision-making about and treatment of historic places throughout the state. In FY19, staff added 245 standing structures and survey districts, as well as 116 updates, to the Maryland Inventory of Historic Properties, totaling more than 9,546 acres.

FY19 Historic Preservation Grants for Architectural Research and Survey

In FY19, the Historic Preservation Non-Capital Grant Program provided \$191,000 in funding to five projects for architectural research and survey.



Park Heights Historic District, Baltimore City (\$20,000)

Funds will help Park Heights Renaissance, Inc. prepare a National Register nomination for Park Heights Historic District in Baltimore, which represents a characteristic “streetcar suburb” developed between 1888 and 1945. Listing in the National Register will contribute to ongoing revitalization efforts.



Documenting Racially Restrictive Covenants in Hyattsville, Prince George’s County (\$21,000)

Funding to the Hyattsville Community Development Corporation will support title searches to identify properties with racially restrictive deed covenants in the City of Hyattsville. The project will result in a report that incorporates additional historical context and analysis, as well as a publicly accessible interactive mapping database.



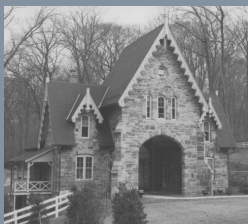
Maryland State Parks Historic Properties Survey (\$50,000)

The Maryland Department of Natural Resources will undertake a survey of four Maryland state parks spanning six counties (Anne Arundel, Baltimore, Cecil, Frederick, Howard, and Washington). Work includes the preparation of Maryland Inventory of Historic Properties and Determination of Eligibility forms, plus additional historic context related to park development in the New Deal era.



Historic Sites Survey in Somerset and Dorchester Counties (\$45,000)

Somerset County Historical Trust, Inc. received funds to complete a historic sites survey in Somerset and Dorchester counties, documenting a variety of properties related to village and city landscapes, as well as rural agrarian farmsteads. Many of the target properties are threatened by demolition by neglect, absentee landowners, coastal erosion, and/or the effects of sea-level rise.

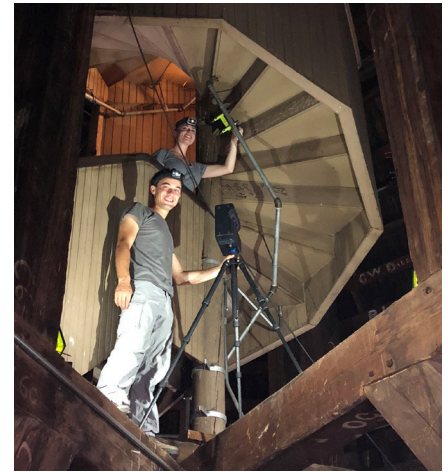


LGBTQ History in Maryland (\$55,000)

Grant funds to Preservation Maryland will help develop a statewide historic context for Lesbian/Gay/Bisexual/Transgender/Queer (LGBTQ) history and create a digital map and accompanying database of related sites. Public outreach meetings, tours of sites, and lectures will highlight the research efforts.

Architectural Research and Survey Activities

In addition to projects funded through the Historic Preservation Non-Capital Grant Program, MHT hired a consultant to document historic sites related to the Women's Suffrage Movement in Maryland, supported by an Underrepresented Community Grant from the National Park Service. With funding from the MHT Board, hired a specialist to undertake dendrochronology on Wyoming, an important early house in Prince George's County. MHT also hired a consultant to conduct a significant documentation project of the Maryland State House dome using laser scans and drone images; final products included a preliminary assessment of the historic fabric located within the dome structure. Additionally, in October 2018, staff hosted an Architectural Fieldwork Symposium, attended by approximately 100 people. Due to its success, MHT is making the symposium an annual event.



Architectural documentation in progress in the State House dome.

Supporting Local Efforts

In addition to ongoing outreach and assistance to preservation planners, staff conducted site visits to assist property owners and preservation partners on architectural projects, including: Whitehall and Smith Farm (Anne Arundel County); the Anchorage (Cecil County); Sarum (Charles County); Appleby and the Bayly House (Dorchester County); Auburn and the Steiner House (Frederick County); Highlands and Lisbon Hotel (Howard County); Charles Wagner House, Poplar Hill on His Lordship's Kindness, Melwood, Mount Lubentia, Montpelier, Belts Woods Barns, and Riversdale (Prince George's County); Fort Frederick School House (Washington County); Sotterley (St. Mary's County); and the Hammond-Harwood and Chase-Lloyd Houses and the Maryland State House (Annapolis). As part of this work, staff provided guidance and expertise on restoration and reconstruction efforts, including the Brice House in Annapolis. The ongoing Brice House restoration project will restore the house to its completed 1774 appearance. Work over the past year has focused on installing an authentic new wood shingle roof, as well as beginning the cleaning and repair of the ornamental plasterwork.



While octagonal building forms were admired by the gentry in the neoclassical era, they were not a common way of building, and few structures with octagonal plans survive from this era. The Mount Lubentia Dairy (left) is one such example. The Araby Dairy (right), which includes a unique double-roof system, is another early service outbuilding in southern Maryland documented with Non-Capital Grant funds. *Photos courtesy William Graham, 2020*

National Register of Historic Places

As Maryland's federally-designated State Historic Preservation Office, MHT is responsible for nominating Maryland properties to the National Register of Historic Places. In FY19, seven individual properties in Maryland were added to the register, including Mason and Dixon West Line Markers 76 and 77 (Frederick County), New Town Center (Prince George's County), Mercantile Deposit and Trust (Baltimore City), Cockey-Jamison-Hendrickson House and Store (Frederick County), Cool Hollow House (Washington County), Lime Kiln Bottom (Baltimore County), and Oakland (Frederick County). As contributing resources within these listings, 30 Maryland properties are afforded the benefits and protections of National Register designation.



Lime Kiln Bottom derives its name from a complex of 3 lime kilns built between 1785 and 1893. Located on Minebank Run within Cromwell Valley Park, the kilns and manager's house were recently restored by Baltimore County.



The Cockey-Jamison-Hendrickson House and Store have been central to the community of Urbana since the mid-19th century.



Set in 1767, milestones 76 and 77 are two of the 132 original monuments placed by Charles Mason and Jeremiah Dixon to mark the boundary between Maryland and Pennsylvania.

Architectural Survey Data Analysis Project

The Architectural Survey Data Analysis Project assesses, county by county, the Maryland Inventory of Historic Properties and other MHT Library holdings. This comprehensive review highlights missing or incomplete documentation to inform and guide future survey efforts. Through this analysis, the project identifies underrepresented historic themes, architectural styles, and building and property types, as well as under-surveyed areas. The project will generate a list of highly significant resources that need to be resurveyed or researched further. Data collected during the project (e.g., architectural style, building type, historic function, materials, date of construction, etc.) will eventually become searchable data in Medusa, the state's Cultural Resource Information System. Currently, staff have completed documentation review for Worcester, Wicomico, Somerset, Cecil, and a portion of Queen Anne's counties, with data entry underway for Worcester, Queen Anne's, and Cecil counties.

Success Story: Augusta Chissell Inducted into the Maryland Women's Hall of Fame

Through the efforts of staff, Augusta T. Chissell, an important African American leader of the Women's Suffrage movement in Baltimore City in the early 20th century, was inducted into the Maryland Women's Hall of Fame at a ceremony on March 21, 2019 at the Miller Senate Office Building in Annapolis. State suffrage leaders, including Ms. Chissell, developed a robust network of grassroots organizations across Maryland, greatly shaping the fight for voting rights. While the work of these activists has largely been forgotten, this is particularly true for African American suffragists, who were excluded from prominent suffrage organizations and omitted from newspaper coverage and organizational records. Early 20th century African American suffragists' work was particularly important at a time when Jim Crow laws sought to undermine civil rights. Ms. Chissell joined seven other notable Maryland women honored for their achievements and contributions to the state, and Carla Chissell, her great niece, was there to receive the honor on her behalf.



Maryland Archaeological Conservation Laboratory

The MAC Lab at JPPM houses the state’s archeological collection, which includes more than nine million objects collected over the past 100 years.

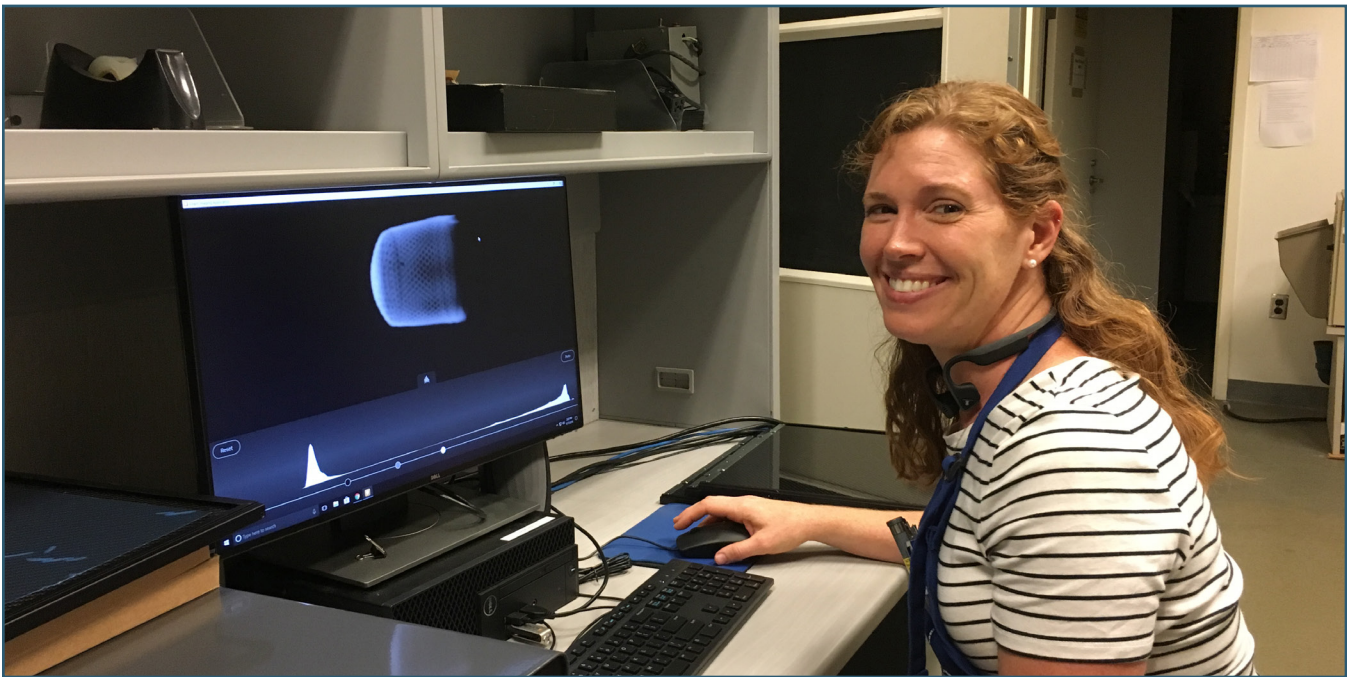
Research and Conservation

In FY19, staff conserved a wide variety of artifacts from clients throughout the country, including the National Park Service, Delaware State Parks, City of Deadwood, New York State Museum, Alexandria Archaeology, Calvert Marine Museum, Chesapeake Beach Railway Museum, James Madison’s Montpelier, Thomas Jefferson’s Monticello, and Thomas Jefferson’s Poplar Forest. Included among the objects conserved were a World War II anti-ship mine and accompanying anchor discovered on the beach at Cape Henlopen, Delaware; an early 20th century axle from the first automobile from Deadwood, South Dakota; Revolutionary War-era bayonets from Valley Forge; 18th century timbers from the Carlyle Warehouse, the oldest public structure in Alexandria; a Civil War-era wagon wheel rim from Antietam; a mile marker from the National Road; an early 20th century railway sign; and a Miocene coniferous seed pod.

Three members of the staff—Rebecca Morehouse, Sara Rivers Cofield and Patricia Samford—had articles published in an edited volume entitled *New Life for Archaeological Collections* (University of Nebraska Press, 2019). Samford’s article was co-authored with JPPM Deputy Director Rachelle Green. To help improve collection practice and sustainability, the MHT Board approved the revised Curation and Conservation Standards and Guidelines and an increased box fee policy, later signed by the Secretary of Planning. The new guidelines and fee structure took effect on January 1, 2019.

Facilities Improvements

During FY19, the MAC Lab upgraded its x-radiography unit from a film-based to a digital system, which enabled the lab to undertake an extensive x-ray collections assessment project for the New York State Museum. The lab also received a new chemical storage shed to replace one that had become unsafe. Additional facilities repairs and improvements are scheduled.



Head conservator Nichole Doub working with the new digital x-ray software.

Success Story: Artifacts of Outlander Online

The Artifacts of Outlander travelling exhibit was retired in April 2019 after four years of touring venues throughout Maryland, Virginia, and North Carolina. The exhibit, which received an award of merit from the American Association of State and Local History, was based on the popular book series by Diana Gabaldon and the Starz miniseries "Outlander" and utilized about 200 archeological artifacts from the MAC Lab collections. An online exhibit (apps.jefpat.maryland.gov/outlander/) allows audiences throughout the world access to images and information from the travelling exhibit.

Bonny Wee Baubles

Women in both 18th-century Scotland and Maryland wore a petticoat and gown over stays (known now as a corset) and a shift (a full-body slip). Very little survives archaeologically other than metal and glass accessories and fasteners.

Click on the artifacts to see more about womens' clothing.



Silver & Silk
Threads



Linked
Buttons



Fasteners



Jewelry



Shoes



Bodkin



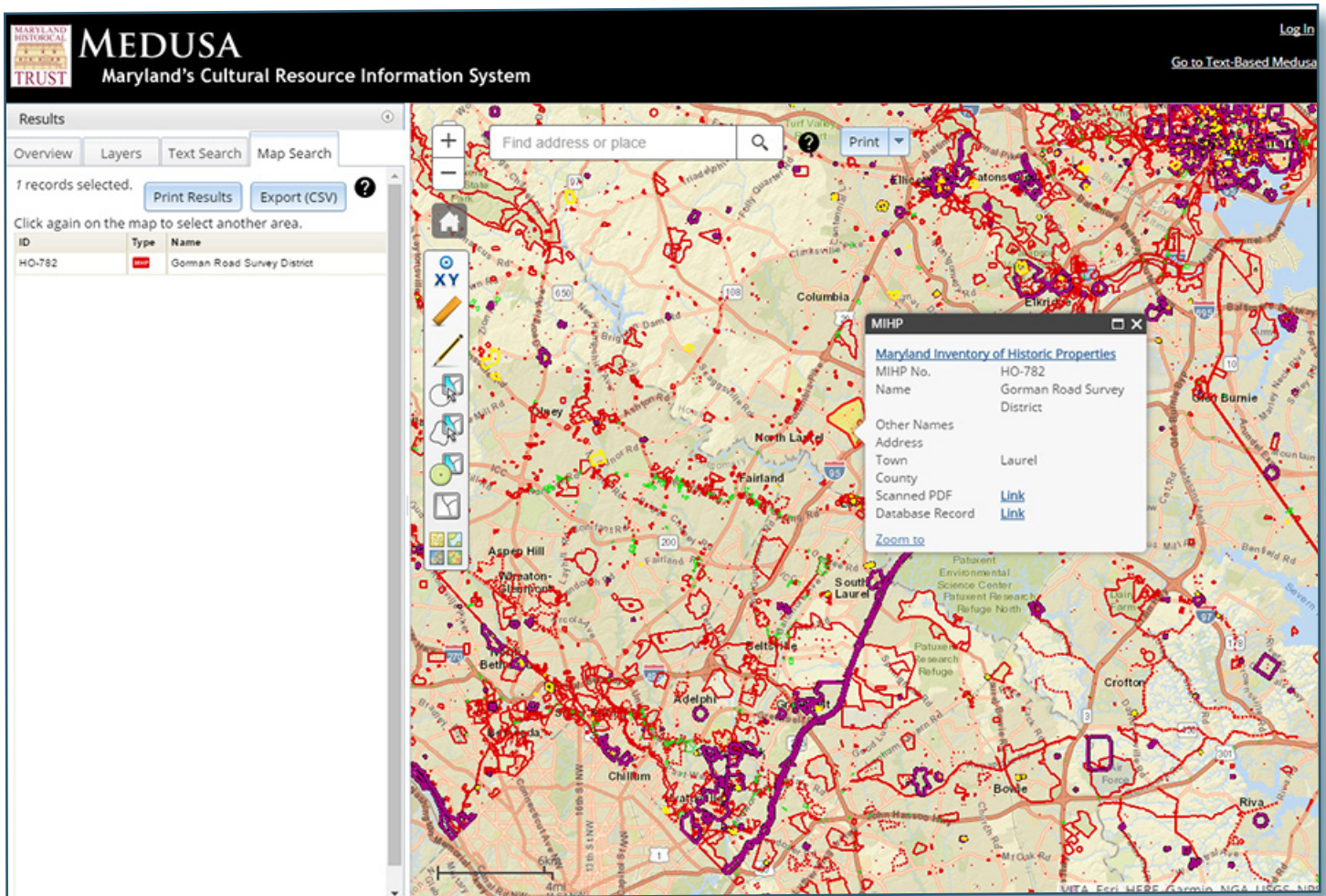
A panel from the Artifacts of Outlander exhibit created by Jefferson Patterson Park and Museum.

Cultural Resource Information Program: Research on Site and Online

Many cultural resource professionals, such as architectural historians and archeologists, visit MHT's library in Crownsville each year to research historic and cultural properties. MHT also recognizes that online access to information is critical for researchers in the state and beyond, and in FY19 MHT continued substantial steps to improve and enhance online access to this data.

Medusa, the State's Cultural Resource Information System

MHT launched a map-based online version of Medusa, the state's cultural resource information system, in FY18. By clicking on properties on the map, Medusa provides access to the state's data on more than 45,000 known architectural and 15,000 known archeological resources. Map-based searches increase efficiency for researchers, businesses and government agencies, while improving access to historic property information sought by students and the interested public. Take a tour of the site by visiting mht.maryland.gov/secure/medusa.



With support from a generous grant from the Maryland Department of Transportation State Highway Administration, MHT continues to document and categorize individual architectural resources. This work, part of the "Architectural Survey Data Analysis Project" (described in Architectural Research and Survey), will provide much more robust search capabilities in Medusa, including searches by building or site type, architectural style, construction date, and historic function.

GIS and Databases

As MHT continues to register new entries into the Maryland Inventory of Historic Properties, resources are electronically mapped and entered into a comprehensive GIS database. The program works extensively with staff and other agencies to ensure consistency and completeness. Much of the data is made available through MD iMAP, Maryland's Mapping and GIS Data Portal (imap.maryland.gov/). Staff member Jen Chadwick-Moore also serves as Maryland's representative with the Council of Geographic Names Authorities, responsible for coordinating place-naming activity among local, state, and federal agencies.

MHT Library

The MHT Library holds books, journals, vertical files, inventory forms and photographs for all inventoried architectural and archeological sites, architectural drawings, more than 4,500 site-specific reports (some of which have been digitized), oral history interviews (on tape and in written form), and copies of historic maps. As in previous years, customer feedback was highly positive in terms of service, availability of needed information, ease of scheduling appointments, and knowledge of staff when responding to reference requests.

The MHT Library received a complete makeover in early 2018, with repainted walls, new carpet, and new furniture and file cabinets to make the space more welcoming and efficient. Librarian Lara Westwood, who began work in FY19, is re-cataloguing and re-shelving MHT's large archive of field notes, slides, negatives, and maps.



A selection of books from the MHT Library's collection of rare books about architecture and Maryland history.

Success Story: Upgrading Medusa

MHT made several improvements to the Medusa web application in FY19, including the addition of data about the state's roadside historic markers. This addition bolsters existing data from the Maryland Inventory of Historic Properties (both architectural records and archeological site records), National Register of Historic Places, and MHT historic preservation easements. Additional reference maps were also added to overlay the data on maps of physiography, soils, and legislative boundaries, as well as administrative boundaries used by various agencies.

A screenshot of the Maryland Historical Trust website. At the top, there is a header with the Maryland state logo and the text 'DEPARTMENT OF PLANNING MARYLAND HISTORICAL TRUST'. Below the header, the page title is 'Maryland's Historical Markers'. The main content area shows search results for 'Markers in Saint Mary's County (11 of 20 markers)'. A specific marker is highlighted: 'Margaret Brent Pilgrimage' located in 'Lexington Park, Saint Mary's County'. It includes map coordinates: 'MAP COORDINATES: N 38 11 17 W 76 25 57' and a link to 'Show in Google Maps'. There is also a 'Related Photos' section with a photo of the marker and a 'Photo Date: 2019'. On the left side of the screenshot, there is a navigation menu with links like 'MHT Home', 'Introduction', 'History', 'Search the Markers', 'Tours and Story Maps', 'Maintenance & Repair', 'Propose a New Marker', 'Marker FAQs', and 'More About This Site'. There is also a small image of another marker titled 'MASON AND DIXON LINE'.

Preservation Planning

Local governments play a critical role in identifying, protecting, and enhancing historic places and culturally significant sites. MHT assists local governments by responding to inquiries about preservation issues, through the voluntary Certified Local Government (CLG) program, and by reviewing and commenting on local comprehensive plans and amendments.

Certified Local Government Program

The CLG program, administered by the National Park Service and MHT, recognizes counties and municipalities that have made a special commitment to preservation. MHT awards 10% of its annual allocation from the National Park Service's Historic Preservation Fund to CLG projects and educational opportunities each year. The following grants were awarded in FY19.

LGBTQ Historic Property Documentation, Baltimore City and Montgomery County (up to \$50,000)

Preservation Maryland, on behalf of Baltimore City and Montgomery County, will undertake Phase II of a statewide project on LGBTQ heritage, which will include the research and documentation of individual sites and district(s) for the National Register of Historic Places. This project follows the development of a context study in Phase I, which is currently underway.

Economic Benefits of Preservation in Cumberland, Allegany County (up to \$23,846)

The City of Cumberland will use funds to evaluate the economic benefits of historic preservation projects in Cumberland over the past 20 years and produce a report to help inform future planning efforts.

Educational and Training Programs for CLGs (up to \$10,500)

Maryland Association of Historic District Commissions (MAHDC), on behalf of eligible CLGs, will administer funding for educational and training programs serving historic preservation commissions. The grant includes an administrative fee and support for MAHDC's annual symposium.

Weather It Together Program

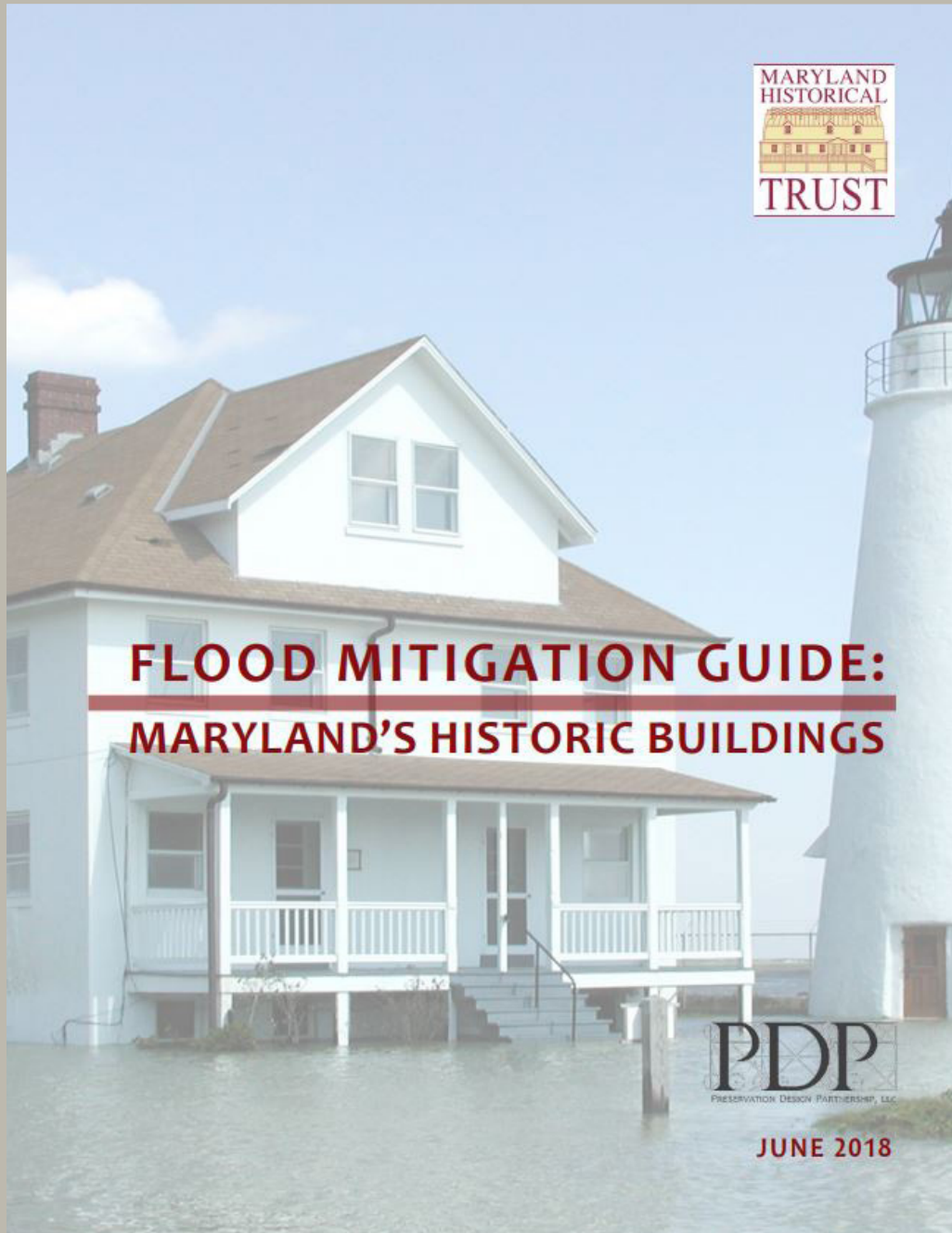
MHT's *Weather It Together* Program offers technical assistance and guidance to local communities on hazard mitigation planning, disaster response and recovery, and climate adaptation. The program relies on collaboration with federal and state partners, including the Maryland Resiliency Partnership, a multiagency effort that includes nonprofits dedicated to resilience planning, and the Adaptation and Resiliency Working Group of the Maryland Commission on Climate Change.

Outreach and Educational Activities

Staff presented on the *Weather It Together* Program and its resources at the national, state, and local levels, including at the National Alliance of Preservation Commission's biennial Forum in Des Moines, Iowa; the Maryland Climate Leadership Academy; the MAHDC annual symposium; and the National Park Service regional meeting of State Historic Preservation Offices in Harrisburg, Pennsylvania.

Success Story: *Flood Mitigation Guide: Maryland's Historic Buildings*

In FY19, MHT announced an important new resource for local communities: the *Flood Mitigation Guide: Maryland's Historic Buildings*, produced by Dominique Hawkins of Preservation Design Partnership, LLC, in partnership with MHT. This guide is intended to help local governments and preservation advocates plan for and adapt historic buildings and districts threatened by flooding from tides, coastal surges, flash floods, and sea level rise. Both the *Weather It Together Program* and the *Flood Mitigation Guide* were developed with support from the National Park Service's Hurricane Sandy Disaster Relief Fund. The guide is available for free to download on the *Weather It Together* home page.



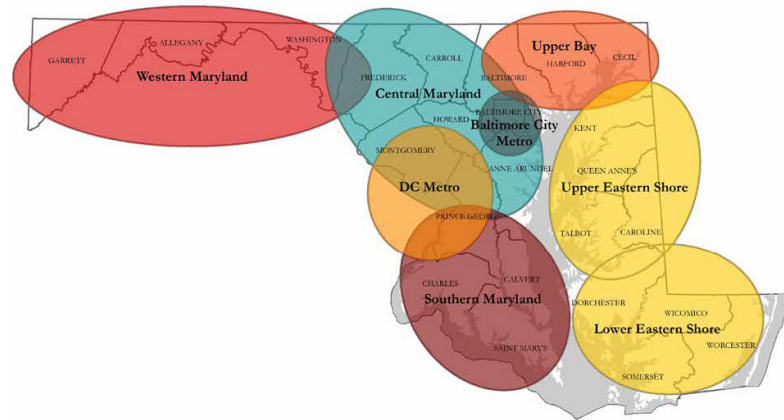
PreserveMaryland II, the Statewide Preservation Plan

PreserveMaryland II Vision:

Preservation, archeology and cultural heritage enrich the lives of Marylanders by helping us:

- » Learn from our past
- » Strengthen local economies
- » Revitalize our communities
- » Connect our past to our future
- » Tell the stories of all Marylanders
- » Save the places that make our state vibrant and beautiful

Diagram of Regions Used in PreserveMaryland II



As Maryland's State Historic Preservation Office, MHT produces a state historic preservation plan approximately every five years, pursuant to Section 101(b)(3)(c) of the National Historic Preservation Act, as amended. This plan provides guidance for effective decision-making by the statewide preservation community, including MHT. In addition to historic preservation, which typically refers to architecture, the plan also includes archeology and cultural heritage.

PreserveMaryland II was guided by an interdisciplinary advisory committee in collaboration with statewide partners, including Preservation Maryland, MCAAHC, Maryland Commission on Indian Affairs, Archeological Society of Maryland, Inc., Council for Maryland Archeology, Main Street Maryland, Maryland Association of Historic District Commissions, Coalition of Maryland Heritage Areas, and Maryland Museums Association. These committee members and organizations co-hosted outreach meetings, facilitated discussions, and helped bring constituents to the table.

To help shape PreserveMaryland II and the next five years of historic preservation, archeology, and cultural heritage activities in Maryland, members of the public provided more than 2,000 comments through a variety of public outreach opportunities including:

- Six regional public meetings
- Three regional meetings on African American heritage, co-sponsored with MCAAHC
- Focus groups organized by topic and profession
- A general survey open May to October 2018, advertised online and in meetings
- Targeted surveys to constituent groups and events
- One-on-one stakeholder interviews with representatives of key agencies and organizations

Overall, public feedback indicated that the 2014 statewide preservation plan had identified the key issues that need to be addressed to more effectively protect, preserve, and enhance historic sites and cultural heritage in Maryland. To that end, PreserveMaryland II builds on the previous plan, PreserveMaryland, with new strategies toward the same five statewide goals:

1. Connect with Broader Audiences
2. Improve the Framework for Preservation
3. Expand and Update Documentation
4. Build Capacity and Strengthen Networks
5. Collaborate Toward Shared Objectives

Goal 4: Build Capacity and Strengthen Networks



The MHT Roadshow

Highlight: MHT Roadshow

In the fall of 2017, the MHT launched a new **outreach program** to help constituents learn more about the agency's work and programs. Working with a host agency or organization, staff offer short presentations on a variety of topics, including MHT grant programs, architectural research and survey, and preservation easements, that are tailored to the audience's needs. Attendees are encouraged to ask questions, network with each other, and participate in the conversation. To learn more or schedule a roadshow in your community, visit [MHT's website](#).

Objective 1: Develop a regular annual cycle of training and networking opportunities for cultural heritage professionals and volunteers.

Immediate strategies:

- Develop and share a calendar of annual offerings and opportunities (MHT, PM, MAHDC, local governments and nonprofits), including the following:
 - Archeological Symposium, Workshop in Archeology, Field Session, Discovering Archaeology Day (MHT, ASM, JPPM)
 - Old Line State Summit, Best of Maryland Awards (PM)
 - Annual Symposium (MAHDC)
 - Maryland Preservation Awards (with PM and American Institute of Architects), Architectural Fieldwork Symposium (MHT)
 - Bmore Historic, Small Museum Association, Historic Sites Consortia, Certified Tourism Ambassador Training (Heritage Areas, local and regional nonprofits, museums)
- Annual check-in meeting for preservation plan progress, new objectives and strategies (MHT)

Western Maryland: Regional Goals, Objectives and Strategies

Goal 1: Connect with Broader Audiences

Objective: Enhance opportunities for local residents, particularly youth, to experience and learn local heritage.

Immediate strategy:

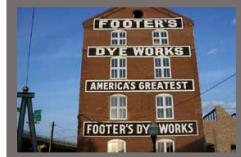
- Work with individual schools and teachers to identify ways to include local heritage in curriculum (Local nonprofits and museums)

Goal 2: Improve the Framework for Preservation

Objective: Expand outreach and training programs to increase participation in and knowledge of preservation.

Immediate strategies:

- Increase outreach efforts for existing programs (e.g., tax credits, commission trainings) (MHT, MAHDC)
- Enhance access to resources in rural communities through collaborative outreach (PM, Rural Maryland Council, local governments and nonprofits)



Highlight: Footer's Dye Works

Footer's Dye Works, built in 1906, is an important remnant of Cumberland's industrial heritage and the last of a large complex of industrial buildings constructed in the early 20th century. Throughout the 1920s, Footer's Dye Works was one of the dominant cleaning and dyeing establishments in the mid-Atlantic region, with major branch offices located in Baltimore, Philadelphia, and Pittsburgh. At its peak, Footer's employed as many as 500 people and named the White House among its many clients. Following a restoration begun in 2015, the Footer Building has become a mixed-use facility that includes a brewpub, restaurant space and luxury loft apartments.

Each statewide goal includes broad objectives and specific strategies for each objective, and each strategy lists the key organizations or agencies responsible. Due to the fact that Maryland's regions vary so much in development patterns, historic and cultural resources, local land use and local economies, PreserveMaryland II also includes sections on the various challenges and opportunities to the state's unique heritage by region, along with goals, objectives, and strategies tailored to each. Read the plan online at mht.maryland.gov/plan.shtml.

PreserveMaryland II



The Statewide Preservation Plan (2019-2023)

Historic Preservation Easement Program

A historic preservation easement is the highest form of protection available for any historic, archeological, or cultural resource. An easement ensures that a property will continue to be both appropriately maintained and accessible to the public. MHT currently holds a statewide easement portfolio of 710 easements on 928 properties, encompassing approximately 7,720 acres; most of these easements provide perpetual protection. Many easements were conveyed as gift easements by private owners wishing to ensure the continued preservation of a beloved property; some easements were obtained as part of a transfer of state or federal property into private ownership to ensure continued oversight; and other easements were received as a condition of various forms of state or federal grant or loan funding as a means of protecting the investment of public dollars. In FY19, MHT acquired four new easements and modified one existing easement to bring the easement into conformity with MHT's current standard form of easement.

County	Name	Scope	Record Date	Source	Acres
Frederick	St. Paul's Episcopal Church	Modification	43445	N/A	-
Washington	Wiles Tract at Battle of Falling Waters	Archeology	43474	FY14 MHAA Grant	3.5
Frederick	19-21 West Main Street	Exterior	43502	FY19 MHAA Grant	0.0449
Washington	Fort Ritchie	Exterior, Modified Interior, Archeology	43593	Gov't Property Transfer	53.52
Anne Arundel	McDowell Hall	Exterior	43599	Bond Bill	0.25

Entering into an easement agreement with MHT initiates a partnership between MHT and the owner of the property. The property owner takes on certain responsibilities; generally, these include maintaining the property, insuring it, and requesting MHT's approval for alterations. MHT also takes on certain responsibilities, including timely review of proposed alterations and inspection of protected properties. Staff, ranging from architectural historians to archeologists, are available to provide technical assistance on preservation best practices and guidance on proposed restoration or rehabilitation projects. Since the easement endures even when a property changes hands, MHT provides stability in the long-term preservation of these significant properties, ensuring that the changes that may be needed over time occur in a sensitive and appropriate manner.

Easement program staff encourage property owners to reach out to discuss preservation issues or planned projects. In FY19, staff participated in 50 meetings and site visits in 15 counties and the City of Baltimore to provide guidance and advice about ongoing or proposed projects. Similarly, the easement inspector accomplished 90 site inspections in 18 counties and the City of Baltimore to assess the condition and compliance of protected properties, and to provide technical assistance on building preservation and maintenance. Over the course of the fiscal year, MHT's in-house easement committee reviewed and provided recommendations on approximately 198 projects proposed by property owners and managers.

Easement Property Success Stories

Progress continues at the **A. Hoen & Co. Lithograph Building**, in Baltimore City. The formerly vacant building is undergoing a major rehabilitation effort to convert the building into a mixed-use complex, supported in part by a state historic tax credit. Photo credit: @hoenlithograph (The A. Hoen & Co. Lithograph Building) on Facebook



The Odenton Heritage Society recently restored the front porch entrance and historic wood windows of the circa 1912 **Odenton Masonic Lodge** as part of an ongoing rehabilitation effort.



The **East New Market Passenger Depot** in Dorchester County recently completed an exterior rehabilitation, including repair of the historic windows, in-kind siding replacement, new chimney, repainting, and installation of a new ADA accessible ramp. Supported in part by an MHAA Grant, the next phase includes an interior rehabilitation, which will include a new heating and cooling system, an ADA accessible bathroom, and electrical upgrades, among other repairs.



The **Mt. Gilboa A.M.E. Church** in Baltimore County, awarded an AAHPP grant, is currently undergoing an exterior rehabilitation in order to continue as a place of worship and religious education. The work includes a masonry repointing campaign to remove and replace the overlapping inappropriate mortar from the face of stone with a more historically accurate mortar type, color, and joint profile. The historic wood windows have also received a much needed facelift and will be reinstalled in original openings in the near future.



State and Federal Project Review

State and federal agencies consult with MHT to consider the effects of their projects on historic and archeological resources under historic preservation legislation commonly known as the Section 106 process. Through consultation with agencies, project sponsors, and the public, MHT helps ensure that state and federal agencies effectively balance the needs of the project with measures to avoid, reduce or mitigate harm to historic and archeological properties.

Project Review

In FY19, MHT reviewed more than 6,400 public undertakings through Section 106 consultation to assess the effects of those projects on cultural resources. Staff formally evaluated more than 650 resources identified within project areas for their eligibility in the National Register of Historic Places. Consultation resulted in 25 formal agreement documents to resolve the adverse effects of projects on significant cultural resources. Staff closely coordinated with customers, including governmental agencies, local governments, business entities, consultants, interested organizations, and the public, to facilitate the successful completion of the historic preservation review process.

Program Outreach

Staff provided numerous outreach and training opportunities on the Section 106 review process to multiple federal, state, and local government agencies, as well as program grantees, industry representatives, and the public. MHT served customers including National Resource Conservation Service planners, comprising federal, state and local employees in its county offices, the Maryland Department of Housing and Community Development's Main Street managers recipients of Maryland Bond Bill grants awarded by the Maryland General Assembly; the Baltimore District U.S. Army Corps of Engineers staff; the Maryland Department of Natural Resource Power Plant Research Advisory Committee; members of the general public attending MHT Roadshows; and attendees at the U.S. Army's Installation Management Command's national *Cultural Resources Trends Course* in San Antonio, Texas.

Success Story: The National Park Service Restores Canal Operations in Williamsport

Over the last eight years, MHT has been actively coordinating with the National Park Service Chesapeake and Ohio (C&O) Canal National Historical Park through numerous meetings, site visits, and review submittals regarding its multi-year initiative to restore canal operations in the Cushwa Basin area in Williamsport. The recently rehabilitated and partially reconstructed 1834 stone arch Conococheague Aqueduct now marks a central feature of the interpretive landscape and once more carries the canal over the Conococheague Creek. The National Park Service also rehabilitated the historic 1923 Railroad Lift Bridge and constructed a new wooden stairwell on top of the existing deck to enable pedestrians and bicyclists to conveniently cross the canal and access the towpath. This new walkway allows visitors to directly experience this unique transportation element of the C&O Canal's cultural landscape.



Success Story: MHT Evaluates the Recent Past for the I-495 Managed Lanes Study

MHT participated in intensive consultation with the Maryland Department of Transportation State Highway Administration on the identification and consideration of historic properties for the I-495 & I-270 Managed Lanes Study. Project planning efforts included the survey and evaluation of communities adjacent to two highway systems and analyzed hundreds of properties constructed during the post-WWII housing boom. This work not only assists the decision-making process for the project, but it also vastly contributes to knowledge of the mid-to late-20th century built environment within the Washington, D.C. metropolitan region. One example is the Church of Jesus Christ of Latter-Day Saints Temple located in Kensington, Montgomery County. This architecturally unique and striking visual landmark along the Capital Beltway was designed in 1967 and completed in 1974.



Success Story: Marine Debris Planning and Emergency Response

In FY19, Maryland Maritime Archeology Program (MMAP) staff participated in two state planning workshops to address marine debris and also with the Maryland Emergency Management Agency for emergency mitigation. Additionally, staff attended one federal planning meeting for agencies reviewing the Nationwide Programmatic Agreement to protect historic resources during federal response to oil and hazardous material spills. The Maryland Marine Debris Emergency Response Comprehensive Guide and accompanying field guide are now officially published and available for download (marinedebris.noaa.gov/emergency-response-guide/maryland-marine-debris-emergency-response-guide). MMAP has worked with these agencies and the U.S. Coast Guard for Area Contingency Planning for 20 years. As the only state to be so extensively involved, Maryland has been asked to assist in developing and disseminating training on marine debris and emergency management for other states.



Military Monuments and Roadside Historical Markers

Military Monument Conservation

The Governor's Commission on Maryland Military Monuments was created in 1989 to inventory the approximately 432 military memorials honoring Maryland's veterans, to secure funds for the preservation of those in need, and to develop educational and tourism materials relating to their history. In FY17, MHT began to administer the commission, which consists of up to 18 volunteer members who bring military, historical, business, and government expertise to the important work of safeguarding our state's military monuments. In FY19, staff coordinated maintenance for 15 monuments in the central part of the state as well as one bronze tablet that had never received conservation treatment.



Francis Scott Key memorial tablet in Baltimore City.



Diane Fullick and Heather Rardin treat the "Victory" World War I Monument in Frederick.

Historical Markers Program

Launched in 1933, the roadside historical marker program draws attention to the many events, people, and places that have contributed to the richness of our state and nation. The program, which is administered by MHT in cooperation with the Maryland Department of Transportation State Highway Administration, accepts applications from the public for new markers to commemorate important local history. Application and program guidelines are found on the roadside marker section of the MHT website.

In FY19, markers were installed to commemorate:

- **Just Government League**, installed on northbound Maryland Route 31, just south of its intersection with Maryland Route 140 in Westminster, Carroll County;
- **Margaret Brent Pilgrimage**, installed on Maryland Route 5 in front of the post office, St. Mary's City, St. Mary's County; and
- **A Civil Rights Milestone**, installed on Bloomsbury Road in front of the old Catonsville High School in Catonsville.



Historic St. Mary's City hosted the unveiling of the Margaret Brent Pilgrimage marker, which celebrates the 23-day journey taken by five suffragists in a covered wagon through Maryland's southern counties in 1915 to secure support for women's voting rights. Installation of the marker was sponsored by the 19th Amendment Commission, MHT, and the Maryland Department of Transportation State Highway Administration. Photo courtesy of the Maryland Military Department.



Major General (Ret.) Linda L. Singh, Chair of the Commission on the Commemoration of the 100th Anniversary of the Passage of the 19th Amendment to the US Constitution, and MHT Director Elizabeth Hughes unveil the new marker commemorating the Just Government League, Maryland's largest women's suffrage advocacy organization. (photo: Carroll County Times)

Jefferson Patterson Park and Museum

A 562-acre state facility located on the Patuxent River in Calvert County, JPPM supports the preservation of Maryland's cultural resources and connects people to the past through the preservation and interpretation of our onsite historical and archeological resources. JPPM's grounds contain over 65 documented archeological sites spanning 9,500 years, as well as 15 buildings and structures constructed and used by benefactors Mr. and Mrs. Jefferson Patterson. Park resources are interpreted via museum displays, interpretive trails with accompanying signage, and digitally on the JPPM website. JPPM is also home to the MAC Lab, a state-of-the-art archeological research, conservation, and curation facility (see p. 26).



Activities for children of all ages are provided at JPPM's annual Discovering Archaeology Day, many of which relate to archeology and traditional skills.

JPPM's cultural resources and the MAC Lab collections are collectively used as the basis for robust educational and outreach programming, including onsite park and facility tours, summer camps, and workshops, as well as offsite lectures and classroom visits. With events, tours, lectures, school visits, and workshops, JPPM hosts more than 300 programs and activities annually. JPPM also boasts recreational facilities such as hiking trails, picnic spaces, a kayak launch, beaches, and a pier with boat tie ups. These facilities are free and open to the public from dusk until dawn, daily except New Year's Day, Thanksgiving, and Christmas, and are regularly utilized by visitors.

In FY19, JPPM added a new pier and boardwalk to provide ease of access to new portions of the waterfront, as well as new exhibits and events to increase the diversity of educational and recreational opportunities onsite. As a result of these efforts, JPPM's FY19 attendance increased 18% over FY18 from 88,349 to 104,481 visitors.

Events and Activities at JPPM

JPPM hosts a series of events every year, sponsored both by JPPM and by independent entities. In FY19, events included Discovering Archaeology Day and Egg Hunt (April 20), the "H2O Today" Exhibit Opening (May 17), Children's Day on the Farm (June 2), Bernie Fowler's Patuxent Wade-In (June 9), the 3rd Annual 5K Run/Walk (October 20), the Halloween Festival (October 26), and American Indian Heritage Day (November 3). Independently sponsored events included the Celtic Festival (April 25 to 29), NAACP Community Day (June 15), the United Way Balloon Festival (July 13 and 14), and the Friends of JPPM "Masters of Soul" Concert (September 7).

JPPM also offers free public programming throughout the year, covering a range of topics and designed to appeal to children and adults alike. Village Days, held on the third Saturday of the month from May through October, invites the public to join staff in the Woodland Indian Village to explore native life from 400 years ago. MAC Lab tours are held year-round every Thursday at 11 a.m. and 1 p.m. on the first Friday of every month at 1 p.m., and by request. Participants explore the artifacts held in our MAC lab and visit our collections and conservation facilities. Time-Traveling Kids, held year-round on the second Tuesday of the month, features stories and related activities that transport Pre-K participants into the past. At the Speaker Series, which runs from April through October, experts discuss their work in natural and cultural resources.

Educational Programs

In addition to events and activities, JPPM offers a range of educational programming, primarily geared toward K-12 students. Every 4th and 6th grade class in Calvert County visits JPPM annually for onsite programming, as part of a long-term collaboration with the Calvert County School District. Throughout the fall, staff visits Huntingtown High School to assist students in historical and archeological research using MAC Lab collections. This work has resulted in student displays and public talks. During FY19, more than 3,500 students participated in free on- and off-site educational programming.

JPPM also offers summer camps, workshops, and fee-based educational programming, running from single-day activities through week-long excursions that appeal to children and adults. FY19 summer camps included Archeology Camp, Native Skills Camp, River Life Camp, JPPM Stewards Camp, and “Imagine If” Camp. Workshops and paid educational offerings included Native Life programming, homeschool events, and hands-on workshops. In FY19, JPPM hosted five summer camps, and 27 paid workshops and educational programs.

Success Story: H2O Today

Launched May 18, 2019, H2O Today is a Smithsonian Traveling Exhibit that invites visitors to explore the beauty and essential nature of water, our planet’s lifeblood, through immersive content, interactives, and digital media. The exhibition explores the diversity and challenges of our global water sources and promotes conversation, creativity, and innovation across disciplines. The Smithsonian provided interpretive panel content, while staff fabricated the displays and provided on-site staff to the exhibit during operating hours. friendsofjppm.com/h2o-today.html



Success Story: Pier and Shoreline Stabilization

In April 2019, JPPM opened its new pier with the arrival of the first boat, the Half Shell from Solomon’s Island. Traditionally, the Patterson family had a pier adjacent to their Beach Cottage on the St. Leonard Creek to dock their boat, the Marpat, but the pier was destroyed by Hurricane Isabel in 2003. With funding from the state’s capital budget (\$3,091,000) and a grant from the Maryland Department of Natural Resources (\$99,000), JPPM rebuilt the pier and added improvements including Americans with Disabilities Act (ADA) accessibility, boat tie-ups, life rings, and other safety equipment for boaters visiting the park.



Along the shoreline, the Maryland Department of General Services continues to provide assistance in protecting cliffs and archeological sites by implementing another round of shoreline erosion control measures. Nine new revetments and living shorelines now buffer the creek to the mouth of Mackall Cove.

Maryland Archeology Month 2019

The Magic and Mystery of Maryland Archeology



Find out how people used these artifacts to influence the supernatural at www.marylandarcheology.org

Maryland Archeology Month is sponsored by The Maryland Historical Trust; The Archeological Society of Maryland, Inc.; The Council for Maryland Archeology; The Maryland Department of Transportation; The Maryland-National Capitol Park and Planning Commission Prince George's County Archaeology Program; Historic St. Mary's City; Jefferson Patterson Park and Museum – Maryland Archaeological Conservation Lab; Applied Archaeology and History Associates, Inc.; Stantec Consulting Services, Inc.; A. D. Marble & Company; R. Christopher Goodwin & Associates, Inc.; Lynbrook of Annapolis, Inc.; Rummel, Klepper & Kahl, LLP; AECOM; TRC Environmental Corporation; Cultural Heritage Research Services, Inc. (CHRS, Inc.); The Ottery Group, Inc.

Public Archeology Programs

Each year, through its terrestrial and maritime archeology programs, the MAC Lab, and JPPM, MHT provides opportunities for enthusiasts and the general public to learn more about archeology in the state.

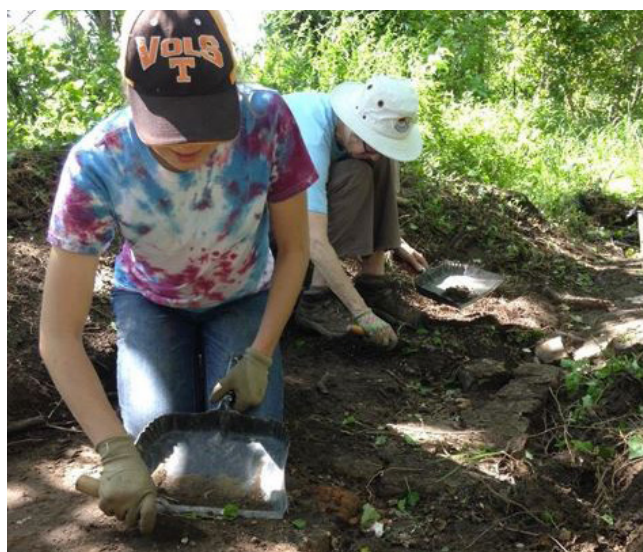
Archeology Month

Every April, Maryland celebrates Archeology Month, an annual statewide event highlighting our shared archeological heritage. The theme for Archeology Month 2019 was *The Magic and Mystery of Maryland Archeology*, which explored the use of objects to influence the supernatural. From the well-known example of a horseshoe over a doorway to the obscure hiding shoes in passageways, people have attempted for centuries to avert disaster, encourage good fortune, and prevent the participation of evil spirits in their lives. The Maryland Archeology Month Committee produced a poster, a magnet, and a booklet for the celebration, all of which were mailed to 1,000 recipients and distributed at more than 20 Archeology Month events.

Tyler Bastian Field Session in Maryland Archeology

The annual Tyler Bastian Field Session in Maryland Archeology, led and coordinated by MHT, combines public outreach, education, and research through the investigation of a significant archeological site. In partnership with the Maryland-National Capital Park and Planning Commission and the Archeological Society of Maryland, the 2019 field session was held at the Billingsley site, operated by Prince George's County Department of Parks and Recreation. While the property has a storied history that includes Major John Billingsley (who acquired the land in 1662 but never personally occupied it), Colonel James Hollyday (who built a home there in 1695), and the prominent Weems family (who built a home in 1740 that still stands), the field session focused on a Native American-occupied portion of the property in an agricultural field, located on a floodplain between the Patuxent River and its Western Branch.

The proceedings of the Maryland Assembly of May 23, 1674, make it clear that Billingsley purchased the land from the "Mattapany and Patuxon [sic] Indians", at least some of whom ". . . doe [sic] Continue upon the Land." Although known to artifact collectors since at least the mid-20th century, this location had received very limited professional archeological attention. In October 2018, MHT staff conducted a magnetic susceptibility survey of the floodplain. This non-invasive remote sensing technique can detect the location of ancient fires and other human activity. An area approximately one acre in size of highly magnetizable soil was identified. MHT archeologists followed up with a magnetometer/gradiometer survey within the identified area, which revealed a large number of magnetic anomalies on the order of one to two meters in diameter. These anomalies served as targets guiding the field session investigation.



Students and families participate in Public Archeology activities at JPPM, assisted by staff members including Alice Merkel, Collections Assistant at the MAC Lab.

Over 11 days, an average of 25 members of the public volunteered under the supervision of six staff archeologists, contributing more than 2,190 hours to the investigation. Eleven excavated units revealed eight Native American pit features or fire/hearth locations. The artifacts recovered spanned the Late Archaic Period (3750 BC – 1250 BC) and Woodland Period (1250 BC – AD 1600). Based on the historical record, the investigators expected to find items characteristic of Native American sites dating to the first century of contact with Europeans, including small trade beads and hammered copper triangles. While no artifacts were recovered that could be definitively tied to Native American trade with the English, some of the ceramics recovered could be from this period. The lack of definitive evidence of contact period occupation is likely due to the fact that the field session efforts involved only about 2% of the site area. Numerous additional anomalies were identified by the gradiometer, but these could not be investigated during the 11 days allotted to the field session.

Annual Workshop in Archeology

Held in Crownsville on a Saturday in March each year, MHT's Annual Workshop in Archeology showcases recent professional archeological work and opportunities for hands-on archeological experiences. The 28th workshop, held on March 30, 2019, included seven hour-long presentations, beginning with keynote speaker Captain William Toti (U.S. Navy ret.), who spoke about the sinking of the USS Indianapolis in the final days of World War II, the successful search for the ship's final resting place, and the effort to exonerate its captain. Other presentations, spread across three venues, included a discussion of the last settlement of the Piscataway Indians in Maryland on Heater's Island, an overview of the archeology of the Eutaw Manor in Baltimore City, an illustrated survey of diverse archeological artifacts that have been interpreted as "magical," a survey of the shipwrecks of Curtis Bay, an overview of the excavation and analysis of a Washington County farmstead, and a preview of the field session (described above). A two-hour training for candidates in the Certified Archeological Technician program presented an overview of historic period archeology in Maryland. Approximately 130 people attended the 2019 workshop.

The Maryland Historical Trust
and
The Archeological Society of Maryland, Inc.
present

A WORKSHOP IN ARCHEOLOGY

Saturday, March 30th, 2019



The USS Indianapolis off Mare Island, CA on July 10th, 1945

100 Community Place
Crownsville, Maryland



Attendees at the 2019 Workshop in Archeology



MHT Assistant Underwater Archeologist Troy Nowak lectures on maritime archeology at Calverton.

Maritime Archeology Education and Outreach

In FY19, MMAP provided 13 presentations and lectures on various historical and archeological topics, participated in a British television production, and led three paddling tours of Mallows Bay as part of the National Marine Sanctuary establishment process. Staff attended and provided content for the public program offered annually by the Maritime Archaeological and Historical Society, judged the Maryland History Day competition, participated and led committees at the Society for Historical Archaeology Conference, and partnered with state agencies and universities in Maryland, North Carolina, and Delaware on research endeavors and student trainings.

Public Archeology at Jefferson Patterson Park and Museum

During JPPM's Public Archeology Program, 67 participants contributed 512.5 hours of their time to dig at the Smith's St. Leonard site and process artifacts in the lab. Many participants came back on multiple days, indicating that they enjoyed their experience.



The Smith's St. Leonard Site (18CV91) was the homelot of a tobacco plantation occupied during the first half of the 18th century in Calvert County, Maryland. The Smith's St. Leonard Site was first identified in 1981 during a preliminary archaeological survey of the JPPM property. No further work was done on the site until 1999, when a small trash pit was uncovered during a shoreline stabilization project. The unusual artifacts recovered from this pit, when combined with the detailed documentary evidence available on the Smith family residency, led JPPM archeologists to make the site the subject of the museum's annual Public Archeology Program. Beads from the site were among 2019's key finds.

Maryland Preservation Awards

On January 31, 2019, at the 44th Maryland Preservation Awards, the MHT Board recognized 11 outstanding efforts in historic preservation, including education, restoration and revitalization projects, and organizational and individual leadership. The following people and projects were recognized:



Cultural Heritage Society of Frederick County for “The Tales of the Lion” (Frederick County)

The Tale of the Lion is an oral history of 21 Frederick County African Americans between the ages of 90 and 105. Reflecting on perseverance through school segregation, poverty, and repressed economic opportunity, these individuals share powerful glimpses of their lives in their own words.
(Excellence in Media and Publications)



Montgomery County Cemetery Inventory Revisited (Montgomery County)

Montgomery Preservation Inc. surveyed and inventoried every cemetery in the county in a massive volunteer effort to support two new ordinances designed to preserve cemeteries and burial sites. Planners now use the 322-site inventory in the development review process.
(Excellence in Community Engagement)



Historic St. Mary’s City Adult Tours (St. Mary’s County)

Comparing and contrasting 17th century and 21st century lives in an adult context, Historic St. Mary’s City Adult Tours touch on the basic aspects of what makes us human – our flaws. Utilizing period court records, the tours illustrate how Maryland society has changed over time and, perhaps more importantly, how it has not.
(Excellence in Public Programming)



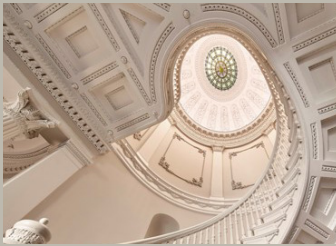
Town of Bel Air for Bel Air Armory Marketplace (Harford County)

The Armory Marketplace is the rehabilitation and adaptive reuse of an L-shaped bank of garages behind the 1915 Bel Air Armory. The town promotes these business incubator suites for new and emerging businesses, with the ultimate goal of establishing these businesses permanently.
(Project Excellence: Community Impact)



Rackliffe House Trust (Worcester County)

This project combines preservation stewardship, sustainable design, and universal access to provide an ADA compliant parking, pathway, and ramp to access the historic plantation house kitchen garden and grounds, located within a coastal critical area amid sensitive archeological deposits.
(Project Excellence: Sustainable Design)



The Walters Art Museum for 1 West Mount Vernon Place (Baltimore City)

Refurbishing this 1850 house has been guided by a commitment to treat historic buildings as works of art in their own right. Historic details were carefully restored or preserved, and the building now shares the stories of the artisans who constructed the house, the families who inhabited it, and the enslaved who served them.
(Project Excellence: Institutional Rehabilitation)



Chesapeake Bay Maritime Museum for the Bugeye Edna E. Lockwood (Talbot County)

Built on Tilghman Island in 1889, the Edna E. Lockwood is preserved as the last Chesapeake Bay log-bottom bugeye still under sail. The nine-log bugeye was restored to sailing condition following a two-year restoration project in full public view in the restoration shipyard.

(Project Excellence: Project Partnerships)



Anne Arundel County for Fort Smallwood Concession Stand (Anne Arundel County)

This project brought a circa 1930s building back from the brink of collapse as part of a larger preservation effort at this historic county park. The structure was carefully restored to its period appearance and is an example of how even extremely deteriorated buildings can return to useful service.

(Outstanding Stewardship by a Government Agency)



Maryland Military Department for Fifth Regiment Armory (Baltimore City)

Conservation maintenance of the 1925 World War I Memorial at the entrance to the Fifth Regiment Armory entailed laser technology to remove old coatings on the Hans Schuler sculpture. A protective acrylic coating was applied to enhance the original colors and patinas of the metals and protect from corrosion.

(Outstanding Stewardship by a Government Agency)



Belva King (Frederick County)

Motivated to share cultural history with current and future citizens, Frederick's Belva King has worked for many years gathering and sharing historical information about Frederick's black community through DVDs, articles, and "Belva's Museum Artifacts," a monthly newsletter emailed to 350 people and mailed to others without internet access.

(Outstanding Individual Leadership)



The Friends of Stanley Institute, Inc. (Dorchester County)

An 1865 one room schoolhouse, 1875 church and cemetery are the oldest surviving remnants of Christ Rock, a historic African American community southwest of Cambridge. Guided by the Friends of Stanley Institute, Inc., the restored church, museum, and rebuilt community hall will serve the community well into the future.

(Outstanding Organizational Leadership)







CHANGING
Maryland
for the Better

State of Maryland

Larry Hogan, Governor

Boyd Rutherford, Lt. Governor

MARYLAND DEPARTMENT OF



PLANNING

Maryland Department of Planning

Robert S. McCord, Secretary

Sandy Schrader, Deputy Secretary

MARYLAND
HISTORICAL



TRUST

Publication Number 2020-202

February 2020