

*Report to the Governor and the General Assembly*

2010 Annual Report of the  
**Maryland Historical Trust**

Maryland Department of Planning

Maryland Historical Trust  
Maryland Department of Planning  
100 Community Place  
Crownsville, MD 21032-2023  
410-514-7600  
[www.planning.maryland.gov](http://www.planning.maryland.gov)  
[www.MHT.maryland.gov](http://www.MHT.maryland.gov)

Martin O'Malley, Governor  
Anthony G. Brown, Lieutenant Governor  
Richard E. Hall, Secretary  
Matthew J. Power, Deputy Secretary

## Executive Summary

The Department of Planning (MDP) is pleased to transmit the 2010 Annual Report of the Maryland Historical Trust (MHT), including information on the MHT Loan Program, the MHT Historic Preservation Grant Program, and the MHT Museum Assistance Program. This report is submitted in accordance with the requirements of State Finance Article §5A-318(c)(16), State Finance Article §5A-327(m), State Finance Article §5A-328(l), and State Finance Article §5A-353(c).

Maryland Historical Trust programs promote the preservation and interpretation of historic resources and cultural traditions throughout the State. Throughout the year, MHT staff continued emphasizing growth management, neighborhood revitalization, and economic development through heritage tourism as agency priorities. Noteworthy activities for 2010 include:

### **USS Scorpion Project**

The six year Search for the *USS Scorpion* Project was initiated this summer in partnership with the Naval History and Heritage Command and the State Highway Administration. The *Scorpion* was the flagship of Commodore Joshua Barney's flotilla that was instrumental in the defense of Washington and Baltimore from British forces during the War of 1812. The flotilla was scuttled in the Patuxent River to prevent its capture by the pursuing British as Barney led his men to Bladensburg in an effort to defend Washington. One vessel was located through remote sensing, probing and test excavation, however additional electronic remote sensing survey indicates the potential for additional vessels in the area; more of the War of 1812 flotilla may survive archaeologically than previously believed.

### **MHT receives TEP funding for the Search for the USS Scorpion Project**

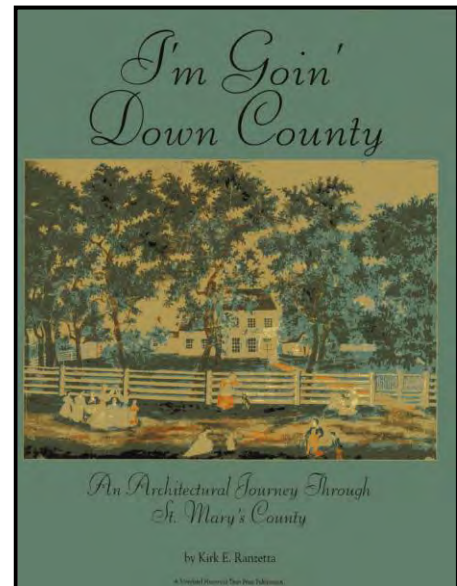
Through the federal Transportation Enhancement Program, MHT received \$2,021,000 for a multi-year project in partnership with the Naval History and Heritage Command (NHHC) and the Maryland State Highway Administration (SHA). The project will endeavor to locate the War of 1812 flagship, *Scorpion*, of Commodore Joshua Barney. This has been complicated by magnetometer survey undertaken by MHT and gradiometer survey undertaken by MHT and NOAA which indicate that there are several vessels in the survey area and not just the single site previously located. Testing began last summer on one vessel and will continue through 2011 and 2012 with the goal of erecting a coffer dam and excavating a vessel in a dry context to maximize public access for education and interpretive purposes.

### **St. Mary's County Architectural History Published**

After five phases of intensive historic sites survey of approximately 400 historic properties, St. Mary's County published, with the assistance of the Maryland Historical Trust, a countywide architectural history publication entitled *I'm Goin' Down County: An Architectural Journey Through St. Mary's County, Maryland* by Kirk Ranzetta. This long-term partnership with the County resulted not only in this widely distributed publication, it also established a permanent preservation planner position in county government and the integration of preservation into everyday local planning and zoning activities. The survey resulted in the completion of a National Register Multiple Property Documentation form for the county as well as the adoption of a preservation plan, the revision of the local historic area zoning ordinance, and the designation of the county as a Certified Local Government.

### **Historic Preservation Master Class**

The City of Cumberland and Allegany College of Maryland joined forces in 2010 to offer a Master Class in Historic Preservation for the training and education directors of local trades unions and vocational schools in Western Maryland. The owners of a large, highly significant contributing building in the Decatur Heights National Register Historic District donated the use of the building as a "laboratory" for the class. Over 12 weeks, the class participants received instruction in basic



(Cover of *St. Mary's County Architectural History* publication)

theories, principles, and concepts commonly used in preservation projects, including character-defining features, the Secretary of the Interior's Standards, and significance and integrity. They then "shadowed" the instructor/consultant as he documented the building and prepared a preservation plan for the building. The intent was not to teach the participants how to practice their craft, but rather show them how to do their work with the significance and character of the building in mind. As leaders of instructional programs that train dozens, if not hundreds of new trades practitioners each year, the class participants are pivotal players in communicating preservation values and practices to other current and future contractors. The course received glowing reviews and produced instructional materials and a preservation plan for the Footer Mansion. Allegany College is currently considering acquiring the property as a venue for future training programs.

### ***PreserveMaryland Kick Off***

In September 2010 the Maryland Historical Trust kicked off ***PreserveMaryland***, an 18-month long process to develop a new state historic preservation plan to address how historic resources and preservation programs should respond to the numerous financial, technological, demographic, and growth-related issues facing Maryland over the coming decades. The end product of this process will be a new state historic preservation plan that will guide the development of historic preservation policies and programs over the next ten years and provide strategic guidance to public agencies, local governments, nonprofit organizations, and the private sector about how to best protect and enhance the places and traditions that form our legacy.

The planning process kicked-off with an Advisory Committee meeting in September and will continue throughout



*(PreserveMaryland Advisory Committee Meeting)*

2011 with stakeholder focus groups, public meetings, surveys, and research reports. At the conclusion of this effort in early 2012, the Trust, in its capacity as the State Historic Preservation Office, will submit the document to the National Park Service as the official State Historic Preservation Plan.

### ***MHT and MCAAHC Launch African-American Heritage Preservation Grant Program***

The African American Heritage Preservation Grant Program was created during the 2010 session of the Maryland General Assembly. The Program is administered as a joint partnership of the Maryland Commission on African American History and Culture (MCAAHC), a unit of the Governor's Office of Community Initiatives, and the Maryland Historical Trust (MHT), an agency of the Maryland Department of Planning (MDP). The purpose of this Program is to encourage the identification and preservation of buildings, sites, and communities of historical and cultural importance to the African American experience in Maryland. Grant workshops led by MCAAHC and MHT staff were held in Anne Arundel County and Prince George's County in June of 2010. Twenty-seven applications were received by the July 15, 2010, deadline. The total funding request was \$2,052,615; the majority of the funding requested was for rehabilitation, with the remainder for predevelopment costs. Applications represented 12 counties and the City of Baltimore. A list of projects recommended for funding was forwarded to Department of Budget and Management at the end of October for inclusion in the FY2012 capital budget. In anticipation of the FY2013 application round, MHT staff promoted the Program at grant workshops in September and October in Williamsport, Salisbury, and Havre de Grace.

### ***Old Senate Chamber Advisory Committee Established***

For several years MHT staff have provided assistance to the Department of General Services and the State House Trust on matters related to the Maryland State House, the oldest U.S. state capitol in continual legislative use. In 2010 the Governor approved a full restoration of the Senate Chamber to December 23, 1783, when George Washington surrendered his commission to the Congress of the United States. Approval was received during a meeting of the Old Senate Chamber Advisory Committee, a group of nationally renowned historians and architectural historians, under the leadership of Richard Moe, President of the National Trust for Historic Preservation, where staff presented a report on the feasibility of restoration. During the remainder of the year, work focused on continued physical investigation of fabric in the Senate Chamber, namely the gallery.

### ***MHT Facilitates Recovery Efforts in Maryland***

MHT's Project Review and Compliance program assisted federal and State agencies and the recipients of funding under the American Recovery and Reinvestment Act of 2009 (ARRA) with effective completion of historic preservation review for over 1242 ARRA-assisted projects in Maryland. Staff made a concerted effort to facilitate the review of ARRA-funded actions through proactive education and training for recipients, streamlined coordination of ARRA initiatives, and project specific review assistance. Through these efforts, MHT helped to promote the prompt and successful resolution of historic preservation review of Recovery projects throughout Maryland.

### ***Collaboration with the Maryland Energy Administration (MEA)***

In 2010, MHT continued to strengthen its highly collaborative relationship with the Maryland Energy Administration. When MEA was faced with an exponential increase in the size of its grant programs as a result of the American Recovery and Reinvestment Act, MEA and MHT entered into an innovative Programmatic Agreement that streamlines the Section 106 process for thousands of undertakings by allowing MEA to complete the review of most grant projects internally with its own cultural resources staff. This process has allowed MHT and MEA to deliver prompt service to grant recipients and proactively guide the sensitive installation of photovoltaic panels and other clean energy technologies on many historic buildings.

### ***MHT Supports BRAC actions at National Naval Medical Center (NNMC) in Bethesda***

MHT participated in extensive coordination efforts with the Navy and other involved parties regarding construction of new facilities totaling 500,000 square feet within the NNMC Historic District. These facilities are part of the Wounded Warrior program, an essential new addition to the campus to help wounded military personnel on their journey of rehabilitation. To ensure the appropriate treatment of the historic district, the Navy and MHT developed a Memorandum of Agreement that establishes design requirements for the new construction, documentation of eleven structures slated for demolition, and the rehabilitation of historic Building 17. Through effective collaboration, MHT helped ensure that the Navy successfully integrated its mission and historic preservation requirements at the historic NNMC facility.

### ***Native American Human Remains Working Group Continues Work***

The Working Group on Native American Human Remains continued their exploration of options for an alternative to the current Interim Appropriate Place of Repose for Native American human remains currently in the care of MHT at the Maryland Archeological Conservation Laboratory at Jefferson Patterson Park and Museum in Calvert County. During 2010 the Working Group met three times. At the January 29, 2010, meeting the Working Group reached consensus on a recommendation to the Secretary of Planning that an Appropriate Place of Repose be established in the ground at Jefferson Patterson Park and Museum (JPPM) for those Native American human remains for which no information regarding their place of origin was available. These "Geographically Unknown" individuals represent approximately 23 of the more than 140 individuals currently in the care of the MHT. The details of the recommendation were discussed at the June 24, 2010, meeting, and a recommended location at JPPM was selected at the September 26, 2010, meeting. A Memorandum of Understanding outlining the recommendation and witnessing the agreement of the Maryland Commission on Indian Affairs and the Maryland Historical Trust was forwarded to the Secretary of Planning on December 2, 2010. It is anticipated that the remains of the Geographically Unknown individuals will be placed in the ground during the Winter of 2011. The recommendation preserves the State's control of the remains, thereby providing the possibility of future repatriation to federally recognized Tribes with a legitimate claim or to study. Further discussions regarding those individuals for whom details of the recovery location are known are anticipated to continue into 2011.

**Maryland Historical Trust  
2010 Annual Report**

**TABLE OF CONTENTS**

<b>I. IDENTIFICATION AND EVALUATION .....</b>	<b>5</b>
<b>A. Architectural Research and Survey Program.....</b>	<b>5</b>
<b>B. Terrestrial Archeology Research and Survey Program .....</b>	<b>6</b>
<b>C. Underwater Archeology Research and Survey Program.....</b>	<b>7</b>
<b>D. National Register of Historic Places.....</b>	<b>8</b>
<b>II. PROTECTION.....</b>	<b>9</b>
<b>A. Review and Compliance Program.....</b>	<b>9</b>
<b>B. Terrestrial Archeology Permits .....</b>	<b>15</b>
<b>C. Historic Preservation Easement Program.....</b>	<b>15</b>
<b>D. Preservation Planning .....</b>	<b>16</b>
<b>E. Military Monuments Conservation .....</b>	<b>16</b>
<b>F. Maryland Archaeological Conservation (MAC) Laboratory.....</b>	<b>17</b>
<b>III. ENHANCMENT.....</b>	<b>18</b>
<b>A. Maryland Heritage Areas Program .....</b>	<b>18</b>
<b>B. Rehabilitation Tax Credits.....</b>	<b>19</b>
<b>C. Grants and Loans .....</b>	<b>20</b>
Historic Preservation Grant Program.....	20
Historical and Cultural Museum Assistance Program.....	21
Historic Preservation Revolving Loan Fund .....	22
Certified Local Government Subgrant Program.....	22
<b>D. Geographic Information System .....</b>	<b>23</b>
<b>E. Outreach.....</b>	<b>24</b>
<b>F. Historic Marker Program .....</b>	<b>28</b>
<b>G. Jefferson Patterson Park and Museum .....</b>	<b>29</b>

## Maryland Historical Trust 2010 Annual Report

The Maryland Historical Trust (MHT, Trust) is the official State Historic Preservation Office for Maryland. The Director of MHT, J. Rodney Little, also serves as the State Historic Preservation Officer (for purposes of the National Historic Preservation Act). MHT has been working to identify, evaluate, interpret, protect, and enhance heritage resources throughout Maryland since its creation in 1961. The mission of the Trust is to preserve and interpret the legacy of Maryland's past. Through research, conservation, and education, the Maryland Historical Trust assists the people of Maryland in understanding their historical and cultural heritage. MHT is a state agency located within the Maryland Department of Planning.

### I. IDENTIFICATION AND EVALUATION

#### A. Architectural Research & Survey Program

Research and survey are the foundation of all preservation activity. These activities develop the data that comprises the Maryland Inventory of Historic Properties, a broad-based catalog of historic resources throughout the state. The Inventory consists of written, photographic, cartographic and other graphic documentation of over 140,000 historic districts, buildings, structures and sites that serve as a physical record of Maryland history. The Inventory is constantly expanding through contributions from the Research and Survey Unit's Statewide Architectural Survey Program, which works with county and local governments and other institutions to identify and document historic resources.

In 2010 the MHT Research and Survey staff reviewed and administered ongoing Non-Capital and CLG grant projects including: county-wide comprehensive surveys in Dorchester and Howard counties; a historic structures report for the Hessian Barracks (Frederick County); a historic context of Rosenwald schools in Maryland; developing a predictive model for 19th century maritime-associated facilities along the shores of the Chester River; an archeological survey of Middle Woodland sites in Anne Arundel County; a remote sensing archeological survey of Western Maryland landscapes; documentation of select resources protected under MHT preservation easements; and preparation of manuscripts for a history of Annapolis and an architectural history of Charles County.



*(Hessian Barracks, Frederick County)*

MHT added 192 standing structures and survey districts to the Maryland Inventory of Historic Properties in 2010. Information on 155 standing structures and survey districts was updated. Overall, 18,127 acres were surveyed to determine the presence of historical and cultural resources.

Other activities undertaken by the Research and Survey Unit include:

⇒ Providing assistance to state agencies, through the State-Owned Cultural Resource Assessment Program, including: assisting the Department of Natural Resources's Curatorship Program to assess a 19<sup>th</sup>-century tobacco barn on recently acquired land in St. Mary's County; advising the Department of General Services and the Maryland School for the Deaf in purchasing shingles for re-roofing the Hessian Barracks in Frederick; and, advising the Maryland Department of Veterans' Affairs on the stewardship of historic Charlotte Hall.

⇒ Continuing to provide assistance to the Department of General Services and the State House Trust on matters related to the Maryland State House. In 2010, MHT staff co-authored a report entitled "Recommendations for the Restoration of the Old Senate Chamber" which was presented to the State House Trust at a meeting of the Old Senate Chamber Advisory Committee, a group of nationally renowned historians and architectural historians, under the leadership of Richard Moe, President of the National Trust for Historic Preservation. After the presentation and discussion, the State House Trust approved moving forward with a full restoration to its appearance on December 23, 1783, when George Washington surrendered his commission to the Congress of the United States.

For the remainder of the year, staff continued investigation and analysis of the Old Senate Chamber in preparation for the proposed restoration.

⇒ Providing guidance and expertise on major restoration and documentation projects including the Maryland State House; Footer Mansion (Allegany County); Hammond Harwood House, Tulip Hill, Ridout House (Anne Arundel County); St. John the Evangelist Church and Girls' School (Baltimore City); Hessian Barracks, Bowman Farm (Frederick County); Doughoregan, Belmont, Felicity Blacksmith Shop, Folly Quarter (Carroll Hall), Hickory Ridge, Howard Lodge (Howard County); Woodlawn Barn (Montgomery County); Melwood Park, Bostwick (Prince George's County); Sotterley (St. Mary's County); Wye House Orangery (Talbot County); and the Middlekauf Farm (Washington County).

## **B. Terrestrial Archeology Research and Survey Program**

The staff of the Terrestrial Archeology Program provides the professional expertise in identification, documentation, and evaluation of archeological sites, which is legislatively mandated. The identification and evaluation of archeological sites plays a key role in fulfilling MHT's other mandates to undertake and direct fundamental research; to encourage the preservation of sites; to cooperate in the scientific excavation of sites when warranted; to cooperate with museums and educational institutions, and, to establish educational programs to train interested members of the public.



*(Primrose Site Field Crew, Caroline County)*

In 2010, the Terrestrial Program staff participated in fieldwork and research in Calvert County at the Smith's St. Leonard Site at Jefferson Patterson Park and Museum (JPPM) in cooperation with the Archeological Society of Maryland and the JPPM Public Archeology program. Staff continued the National Register Archeological Site Testing Program with laboratory processing and cataloging of the collections recovered at the Shoemaker (18FR81), Willin (18DO1) and Biggs Ford (18FR14) sites. Testing of the Primrose Site (18CA236), in Caroline County, was directed and coordinated by staff as part of the Survey and Registration cooperative program with the Archeological Society of Maryland. Staff continued to offer classes and workshops in archeological skills and knowledge as part of the Certified Archeological Technician program. In addition, the staff managed Non-Capital grants for survey and field testing in Queen Anne and Caroline counties.

Using \$90,000 provided by the Maryland Historical Trust's Board of Trustees beginning in 2007, Office of Research Survey and Registration (ORSR) archeologists continued to synthesize archeological data documented in numerous cultural resources management (CRM) reports produced over the past several decades. In 2008, the Maryland State Highway Administration's Transportation Enhancement Program (TEP) supplemented this project with a \$135,000 grant. MHT Board and SHA TEP funds will provide for services of contractual archeologists for four person-years. Products for the project include capsule summaries of the CRM reports, a database for managing the data, and, ultimately, two overview books, *Prehistory of Maryland* and *Archeology of Early Colonial Maryland*. Over the course of 2010, work was completed on 8 counties involving some 300 archeological sites. At this point, synthesis work has been completed for all counties except Baltimore, Anne Arundel, Prince George's and Calvert, and Baltimore City.

Staff also continued a project to acquire the records and artifacts from, and prepare a report on, the 1970 University of Maryland excavations on Heaters Island. The island is now the property of the Department of Natural Resources, and the work is being done as part of the MHT State-Owned Cultural Resources Assessment Program. Completion of the report is expected in 2011.

In 2010, 194 historic and prehistoric terrestrial and underwater archeological sites were added to the Maryland Inventory of Historic Properties. Information on 45 historic and prehistoric terrestrial and underwater archeological sites was updated.

### C. Underwater Archeology Research and Survey Program

The staff of the Maryland Maritime Archeology Program (MMAP) actively document Maryland's maritime and submerged historic resources and offer extensive training and education programs and hands-on training experiences in the field and lab. In the safety arena, the Underwater Program assists in locating areas hazardous to commercial and recreational mariners, and reporting those locations to the National Oceanic and Atmospheric Administration (NOAA) for their Automated Wreck and Obstruction Information System. Staff continued to work with the Coast Guard and Environmental Protection Agency to develop the Area Contingency Plan mandated by the Advisory Council for Historic Preservation and the National Conference of State Historic Preservation Officers to guide Maryland's emergency response in the event of spills of oil or other materials potentially hazardous to submerged and riparian archeological historic properties. The program also participates in and acts as coordinator/facilitator for projects that involve broad partnerships with federal agencies such as the National Park Service (NPS), the Navy, NOAA and state agencies such as Maryland's Department of Natural Resources and Department of the Environment.

In 2010, the program provided oversight and saw the completion of two Non-Capital grants to nonprofit organizations searching for and documenting submerged archeological historic properties in the Potomac River and Bodkin Creek, as well as provided field-session training opportunities for other nonprofit volunteer organizations. MMAP is also overseeing three Heritage Area Grants to nonprofit organizations for preservation maintenance of the steam tug *Baltimore*, the sailing ship *Constellation* and submarine *Torsk* and buy boat *Annie D*, through the Baltimore Museum of Industry, Historic Ships in Baltimore, and Echo Hill School, respectively. In addition, one staff member continues to serve on NOAA's Monitor Sanctuary Advisory Council (3<sup>rd</sup> term) and is completing a term on the Advisory Council for Underwater Archeology, and staff members have acted in various advisory capacities to museums and groups throughout the State.

MMAP worked with volunteer divers from the Institute for Maritime History (IMH) who continued to utilize data provided by NOAA to locate and record sites on a region-by-region basis. IMH volunteers also provided assistance in managing and monitoring the *U-1105* Historic Shipwreck Preserve. IMH took over these responsibilities from the Maritime Archaeological and Historical Society (MAHS). MAHS continues to provide introductory underwater archeology training to volunteer divers in partnership with the Maryland Historical Trust.

This year the MMAP worked with the U.S. Navy and SHA to initiate a multi-year project as part of the State's War of 1812 commemoration activities. The project involves the search for the flagship of Commodore Joshua Barney, the *Scorpion*, in the upper Patuxent River. Electronic remote sensing indicated the presence of more than one vessel and testing focused on the area that previous investigations indicated had the highest probability, and located a vessel. Subsequent remote sensing through a NOAA grant, using a different technology, has indicated the presence of several targets and may indicate more of the flotilla survives archaeologically than previously believed. Additional testing is scheduled for this season.

The National Park Service American Battlefields Protection Program (ABPP) grant mentioned above is to document or locate six sites related to the Revolutionary War and War of 1812. This is the third



(Field work on the *Scorpion* site, Upper Patuxent River)

such grant in which MMAP has been involved. This grant has been extended through 2011. In addition, MMAP has been contracted by the Commonwealth of Virginia to assist with an ABPP grant it has received which will involve survey in Maryland waters adjacent to Virginia's Aquia Creek.

MMAP had several meetings with staff from the Maryland Emergency Management Agency (MEMA) to discuss increased coordination, and ways to integrate cultural and historic resources into emergency-response activities. MMAP, MEMA, and FEMA have renewed the Programmatic Agreement that expired in 2008, that will assist in creating products that will assist in decreasing the impact of emergency-response activities on significant historical properties within Maryland.

In 2010, the Program completed and/or provided oversight of electronic remote sensing survey of 6,297.3 acres (>324 linear miles). Staff processed more than 525 maritime-related applications and spoke at numerous engagements on the State's work to preserve and protect its submerged cultural heritage.

**D. National Register of Historic Places**

The National Register of Historic Places is a federal program designed to recognize properties significant in American history and culture. The Office of Research, Survey, and Registration administers the program in Maryland. During 2010, fourteen proposals to nominate Maryland properties to the National Register were reviewed by the Governor's Consulting Committee. Thirteen nominations comprising a total of 1,942 contributing resources were forwarded to the National Park Service for final listing.

Noteworthy properties listed in the National Register during 2010 include a large urban neighborhood in Baltimore City, a textile mill in Allegany County, and a range of eighteenth-, nineteenth-, and early twentieth-century houses and farms throughout the state.

In 2010, the National Park Service added seven Maryland individual properties and one historic district to the National Register of Historic Places.



*(Hebrew Orphan Asylum, Baltimore City)*

The listed properties and districts include:

2010 NATIONAL REGISTER LISTINGS	
JURISDICTION	NATIONAL REGISTER LISTING
Allegany County	<ul style="list-style-type: none"> <li>• Klots Throwing Mill</li> </ul>
Baltimore City	<ul style="list-style-type: none"> <li>• Bohemian National Cemetery</li> <li>• Edmondson Avenue Historic District</li> <li>• Hebrew Orphan Asylum</li> </ul>
Baltimore County	<ul style="list-style-type: none"> <li>• Long Island Farm</li> </ul>
Frederick County	<ul style="list-style-type: none"> <li>• Henry Smeltzer Farmstead</li> </ul>
Talbot County	<ul style="list-style-type: none"> <li>• Miller's House</li> </ul>
Washington County	<ul style="list-style-type: none"> <li>• Jacob M. Funk Farmstead</li> </ul>

## II. PROTECTION

### A. Review and Compliance Program

MHT's Review and Compliance Program is a regulatory program that reviews state and federal undertakings to ensure that Maryland's important historic and archeological properties will not be adversely affected or destroyed by the actions of federal and state agencies or by entities receiving assistance from those agencies. Through consultation with the involved agencies, project sponsors, local governments, consultants, and the interested public – MHT assists program users in fulfilling their historic preservation responsibilities and ensures the appropriate stewardship of Maryland's heritage resources. In 2010, MHT staff reviewed over 5500 public undertakings pursuant to federal and state historic preservation legislation to assess the effects of those projects on historic and archeological properties. The consultation resulted in the development of 27 Memoranda of Agreement and 7 Programmatic Agreements, and 19 Significantly Reduce Effects Letters to resolve the adverse effects of projects or programs on significant cultural resources and afford pertinent mitigation measures. Staff also provided extensive technical assistance to program clients through numerous meetings, site visits, telephone and email contacts, document reviews, agreement negotiations, participation in interagency working groups, and agency trainings.

The following table provides the breakdown of Compliance staff reviews in 2010:

<b>COMPLIANCE REVIEWS IN 2010</b>	
<b>Federal Program Responsibilities</b>	<b>Total</b>
Findings of <del>No</del> Properties"	2297
Findings of <del>No</del> Effect"	536
Findings of <del>No</del> Adverse Effect"	899
Findings of <del>A</del> verse Effect"	41
Findings of <del>P</del> otential Effect"	639
<b>Federal Project Subtotal</b>	<b>4412</b>
Properties meeting National Register Criteria	44
Properties not meeting National Register Criteria	229
Memoranda of Agreement	23
Programmatic Agreements	7
<b>State Program Responsibilities</b>	
Findings of <del>No</del> Properties"	528
Findings of <del>No</del> Effect"	88
Findings of <del>No</del> Adverse Effect"	324
Findings of <del>A</del> verse Effect"	30
Findings of <del>P</del> otential Effect"	122
<b>State Project Subtotal</b>	<b>1092</b>
Properties meeting MD Register Criteria	3
Properties not meeting MD Register Criteria	7
Memoranda of Agreement / Significantly Reduce Adverse Effects Letters	23
Programmatic Agreements	0
<b>STATE AND FEDERAL PROJECTS TOTAL</b>	<b>5504</b>

Highlights of notable case reviews and interagency partnerships are listed below:

- *ARRA Projects:* MHT's Project Review and Compliance program assisted federal and state agencies and the recipients of funding under the American Recovery and Reinvestment Act of 2009 (ARRA) with effective completion of historic preservation review for over 1242 ARRA assisted projects in Maryland.

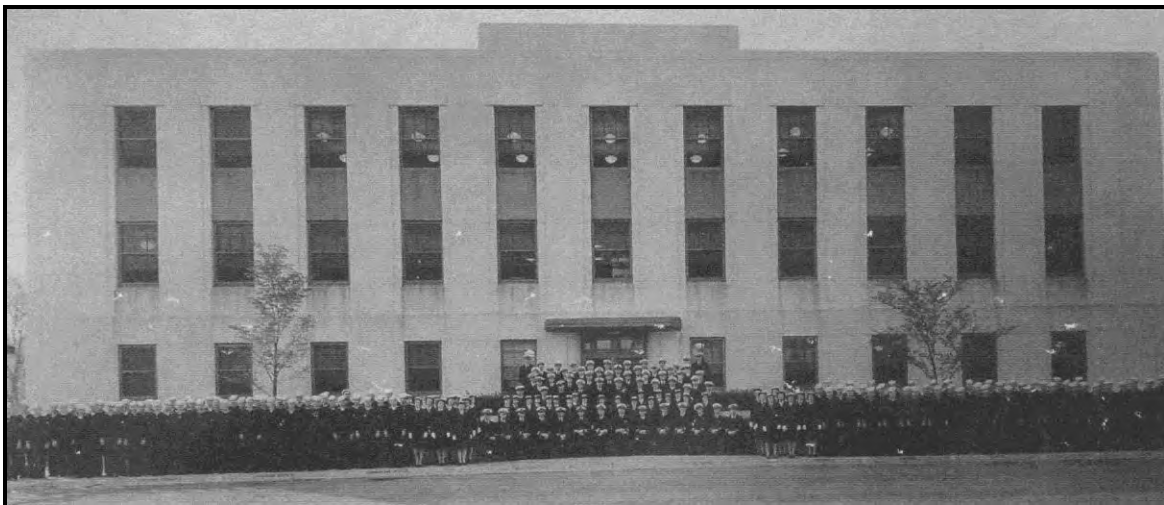
- *Agreement Documents:* Negotiated and executed 27 Memoranda of Agreement (MOA), seven Programmatic Agreements (PA), and 19 Significantly Reduce Effects Letters (SRL) with federal and state agencies to resolve the adverse effects of undertakings on historic properties. MHT continued administration of existing agreements to ensure satisfactory fulfillment of the mitigation measures and relevant stipulations.
- *Determinations of Eligibility (DOE):* Through compliance consultation, staff evaluated 283 heritage resources for eligibility in the National Register of Historic Places and continued implementation and updates of the comprehensive DOE database to streamline the review, documentation, and tracking processes.
- *Maryland Energy Administration (MEA):* In 2010 MHT continued to strengthen its highly collaborative relationship with the Maryland Energy Administration. When MEA was faced with an exponential increase in the size of its grant programs as a result of the American Recovery and Reinvestment Act, MEA and MHT entered into an innovative Programmatic Agreement that streamlines the Section 106 process for thousands of undertakings by allowing MEA to complete the review of most grant projects internally with its own cultural resources staff. This process has allowed MHT and MEA to deliver prompt service to grant recipients and proactively guide the sensitive installation of photovoltaic panels and other clean energy technologies on many historic buildings, such as this illustrated historic Baltimore rowhouse.



(Photo courtesy of MD Energy Administration)

- *Housing and Urban Development (HUD):* Continued close coordination with HUD, the Maryland Department of Housing and Community Development (DHCD), Maryland counties and local jurisdictions, and project sponsors regarding the review of various housing and community development and ARRA funded projects for effects on historic properties. Provided substantive technical assistance to project sponsors to ensure the appropriate treatment of historic properties through adherence to the Secretary of the Interior's *Standards for the Treatment of Historic Properties*.
- *Baltimore City:* Continued extensive coordination with the Housing Authority of Baltimore City (HABC), the Commission for Historical and Architectural Preservation (CHAP), and other Baltimore City agencies to review City projects subject to Section 106. Executed two Programmatic Agreements with Baltimore City and HUD that will streamline the review of projects under the City's administration of its Neighborhood Stabilization and Scattered Sites Rehabilitation programs. Consulted with nonprofit organizations and other interested parties such as Baltimore Heritage and Preservation Maryland to discuss historic preservation concerns related to various City projects.
- *West Side Memorandum of Agreement:* Continued consultation with the Baltimore Development Corporation (BDC) and other involved parties on the appropriate treatment of historic properties under the Baltimore City West Side MOA, including extensive meetings, site visits, and reviews of development proposals for the Superblock and other parcels within the West Side.

- *Army*: MHT continued ongoing Section 106 consultation for undertakings at Fort Meade, Fort Detrick, and Aberdeen Proving Ground and assisted the Army in fulfilling its historic preservation responsibilities.
- *Veterans Administration (VA)*: MHT continued coordination with the VA and the Advisory Council on Historic Preservation (ACHP) regarding historic preservation issues at the Perry Point VA Medical Center in Cecil County and various VA monument and cemetery projects in Maryland.
- *Base Realignment and Closure (BRAC) Actions in Maryland*: Trust staff maintained extensive coordination with Department of Defense installations in the review of various planning, environmental, and project related activities associated with proposed BRAC actions in Maryland at Aberdeen Proving Ground, Fort Meade, Andrews Air Force Base, and the Bethesda National Naval Medical Center (NNMC).
- *Navy*: Maintained close coordination with the Navy on the appropriate treatment of historic properties and Section 106 review of undertakings at the U.S. Naval Academy, Patuxent River Naval Air Station, Solomons Naval Recreation Center, Webster Field Annex, Indian Head Naval Surface Weapons Center (NSWC), Carderock NSWC, Bethesda NNMC and other facilities managed by Naval District Washington. Participated in quarterly meetings and site visits with individual facilities to improve cooperation and streamline the review process. Executed two Programmatic Agreements to cover historic preservation issues related to the Privatization of Military Family Housing II initiative in Maryland for Bethesda and USNA.
- *National Naval Medical Center (NNMC) Bethesda*: MHT participated in extensive coordination efforts with the Navy and other involved parties regarding construction of new facilities totaling 500,000 square feet within the NNMC Historic District. These new facilities are part of the Wounded Warrior program and include a combined Physical Fitness Center, Administrative Facility and Parking Garage, as well as a Bachelor Enlisted Quarters and Dining Facility. The program facilities are an important addition to the campus to help warriors on their journey of rehabilitation. To ensure the appropriate treatment of the historic district, the Navy and MHT developed a Memorandum of Agreement that establishes design requirements for the new construction, documentation of eleven structures slated for demolition, and the rehabilitation of historic Building 17. This building was originally constructed in 1942 and features the same materials and Art Deco styling as the Building 1 Tower at NNMC, designed by Paul Cret. Through effective collaboration, MHT helped ensure that the Navy successfully integrated its mission and historic preservation requirements at the historic NNMC facility.



*(Building 17 at NNMC with members of the Naval Medical Research Institute, 1945, photo courtesy of the Navy)*

- *State Highway Administration (SHA)/Federal Highway Administration (FHWA)*: Maintained close cooperation with SHA and FHWA to fulfill compliance through reviews of numerous transportation improvement and ARRA funded projects statewide and implementation of the Programmatic Agreement (PA) for Minor Highway Projects. Attended monthly interagency review meetings. Continued eighth year of cooperative federal/state funding for the Preservation Officer/Transportation Reviewer position at the Trust. Continued active participation with SHA in implementing the mitigation measures specified in the MOA for the Intercounty Connector (ICC) to resolve the project's adverse effects on historic properties. Executed five MOAs to resolve the adverse effects of bridge replacement projects on historic properties. Reviewed updates to SHA's historic bridge inventory and its *Management Plan* for historic bridges and drafted a Programmatic Agreement for the management of SHA-owned historic bridges.
- *MD 328 over Tuckahoe Creek*: Through extensive consultation with SHA, FHWA, the Advisory Council on Historic Preservation, three federally recognized Indian Tribes, and the Maryland Commission on Indian Affairs - MHT helped successfully resolve adverse impacts on archeological site 18CA239. The executed MOA includes provisions for SHA acquisition and preservation of a Native American ossuary, avoidance of intact 19<sup>th</sup> century cannery and steamboat wharf features, and data recovery investigations of the non-burial components of the archeological site – including its prehistoric resources and the remains of a late 19<sup>th</sup> – 20<sup>th</sup> century cannery workers' complex.



*(Archeological excavations of 18CA239 and recovered projectile point, photos courtesy of Maryland State Highway Administration.)*

- *CSX National Gateway Initiative*: MHT continued extensive consultation with CSX, SHA, FHWA, the National Park Service, and other interested parties for Phase I of the National Gateway Initiative in Maryland, resulting in the execution of an agreement document to resolve the adverse effects on the historic Graham Tunnel in Maryland through recordation and public outreach.
- *Maryland Transit Administration (MTA)*: Continued consultation with the MTA on the appropriate consideration of historic properties during planning for the Purple Line, Red Line, and CCT Transit Studies, park and ride facilities, MARC station improvements, and other projects.
- *Maryland Transportation Authority (MdTA)*: Consulted with MdTA regarding historic preservation issues related to multiple projects and negotiated draft Programmatic Agreement for the US 301 over the Potomac/Harry Nice Bridge Improvement Project with multiple consulting parties.

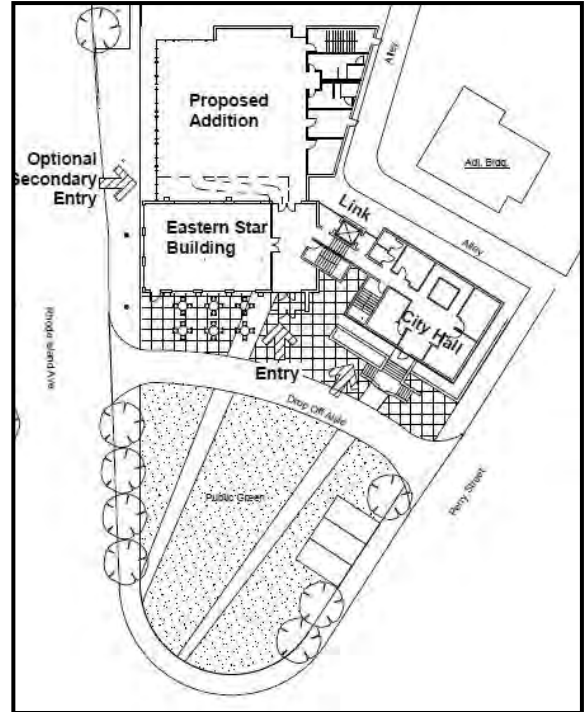
- *Corps of Engineers (COE) & Maryland Department of the Environment (MDE)*: Maintained close cooperation with COE, MDE and applicants for wetlands and waterways permits to ensure the successful fulfillment of Section 106 and respective treatment of historic properties for projects throughout Maryland. Continued COE/MHT coordination meetings to discuss project specific and program related issues and enhance the agencies' working relationships and attended monthly COE/MDE Joint Evaluation interagency meetings to represent cultural resources interests. Notable project-specific consultation included extensive coordination on the Ayers Property/Crossroads, National Business Parkway, and Union Dam projects.
- *Proposed Maryland Energy Projects*: MHT staff maintained close collaboration with the COE/MDE, DNR's Power Plant Research Program, project sponsors and other interested parties on the historic preservation review process and appropriate consideration of historic and archeological properties in the planning for multiple proposed energy projects including: PATH-Allegany, Mid-Atlantic Power Pathway, SMECO transmission line, and expansion of the Calvert Cliffs Nuclear Power Plant. Involvement included attendance at the monthly COE/MDE interagency energy Joint Evaluation meetings, coordination with the Certified Heritage Area directors, participation in interagency site visits, and review of project planning materials and the results of cultural resources investigations.
- *Calvert Cliffs Nuclear Power Plant*: MHT continued extensive coordination with the Corps of Engineers, Nuclear Regulatory Commission, UniStar Nuclear Development, LLC, and other interested parties regarding the construction of a new reactor at the Calvert Cliffs Nuclear Power Plant in Calvert County. Unit 3 will be one of the first new reactors built in the U.S. in more than 30 years. After four years of review and close consultation, MHT helped successfully execute the agreement that stipulates the measures that will be taken to mitigate the adverse effects that the plant expansion will have on historic properties. Those properties include portions of the 19<sup>th</sup> century Drum Point Railroad Bed, Camp Conoy - an early 20<sup>th</sup> century youth camp - and archeological site 18CV474, a mid-19th to early 20th century domestic site associated with the prominent Somervell plantation. Mitigation measures include recordation, archival research, oral history interviews, public outreach, a data recovery excavation at site 18CV474, and the curation of all recovered artifacts.



*(Cabin at Camp Conoy, photo courtesy of GAI Consultants.)*

- *National Park Service (NPS)*: MHT continued implementation of its partnership with NPS facilities in Maryland under the nationwide Programmatic Agreement, through project specific reviews, annual review meetings, and ongoing consultation with staff from the NPS parks in Maryland (C&O Canal, Catoctin Mountain Park, Antietam Battlefield, Monocacy Battlefield, Fort McHenry, Hampton Mansion, Assateague, Fort Washington, Piscataway Park, and Thomas Stone parks).
- *U.S. Fish and Wildlife Service (USFWS)*: Continued consultation with USFWS and Prince George's County regarding the treatment of historic properties at the Patuxent Research Refuge as part of its facilities modernization planning efforts and implementation of ARRA assisted actions.

- Mount Rainier Library and Multi-Use Community Facility:* This facility will encourage continued growth and redevelopment within the historic core of Mount Rainier. The City is implementing the project in conjunction with its Town Center Urban Renewal Project and plans to use funding from multiple state sources. When MHT was contacted about the project in early 2010, the proposed undertaking called for the demolition of the existing library, a contributing element of the Mount Rainier Historic District, and the construction of a four-story building that did not take the historic character of the neighborhood into account. Through consultation, MHT with the City and their architects to consider ways to avoid, minimize, and mitigate adverse effects. This consultation resulted in an agreement among project stakeholders to document the old library prior to demolition and to rehabilitate the adjacent historic Eastern Star Lodge building, which will be incorporated into the project. The expanded project, adjacent to City Hall and a bus transit hub, takes advantage of existing infrastructure and will be compact, transit-oriented, walkable, and encourage further growth and investment in the historic neighborhood.



(Site Plan with Rehabilitated Eastern Star Lodge)

- Federal Communications Commission (FCC):* Administered MHT's review duties under the FCC's nationwide Programmatic Agreements for certain wireless facilities, provided assistance to FCC applicants and the concerned public, and participated in the FCC's E-106 electronic review process.
- Staff Training:* Staff attended several trainings and workshops in 2010 including: the Advisory Council on Historic Preservation's course, *Section 106 Essentials*, providing SHPO perspective for course attendees; the National Preservation Institute's *Preservation Planning for Campuses, Complexes and Installations* course; the Vernacular Architecture Forum's national conference: sessions at the annual Maryland Preservation and Revitalization conference; and participation in MHT's annual Archeology Workshop and Field session.
- Technical Assistance:* Staff provided a wide range of technical assistance to private and government entities to facilitate prompt and effective compliance with relevant statutory historic preservation responsibilities.
- Workshops and Presentations:* Staff gave over five formal presentations on the Section 106 process and historic preservation issues to government agencies and organizations including: the Department of General Services' (DGS) and the Comptroller's annual Capital Projects Seminar for Bond Bill recipients; Maryland Energy Administration's grant recipients of EEGBG funds; Maryland Department of Information Technology's public safety tower program staff; Department of Natural Resources' leases of DNR-owned historic properties; and the Latrobe Chapter of the Society of Architectural Historians.

## B. Terrestrial Archeology Permits

The issuance of terrestrial archeology permits is the primary mechanism for ensuring considerate stewardship of archeological resources owned by the State. The Terrestrial Archeology Permit Program provides a process for partnership between State land managers, the Maryland Historical Trust and those individuals and institutions that seek to excavate State owned archeological sites. Through this regulatory partnership, State land management and archeological expertise are brought together in a way that safeguards our irreplaceable archeological heritage while allowing wise use for researchers, the general public, and future generations of Marylanders. Six terrestrial archeology permits were issued in 2010 for work undertaken on the campus of St. Mary's College, in Historic St. Mary's City, in Greenwell State Park, in Assateague State Park, at the University of Maryland's Litton Property, and on State Highway Administration property as part of the Mid-Atlantic Power Pathway project.

## C. Historic Preservation Easement Program

The Historic Preservation Easement Program is the highest form of protection available for any historic, archeological, or cultural resource. It protects the State's financial investments and offers private owners the ability to protect their property by ensuring that these resources continue to be cared for and made available to the public in perpetuity. In turn, these resources contribute greatly to the development of the State's heritage tourism initiatives and to heritage-related educational programs. In 2010, MHT acquired 11 new easements. The MHT Easement Program now holds 652 easements on over 793 properties, encompassing approximately 9,054 acres statewide.

With the assistance of the Maryland Historical Trust Board of Trustees, the Preservation Easement Program hired an Easement Inspector to conduct inspections of easement properties and to aid in bringing properties into compliance with their Deed of Easement. A new Easement Administrator was hired in August to administer the entire program and manage all changes and alterations to easement properties.

During the year, the Easement Committee reviewed approximately 175 requests from property owners/operators for changes to these easement properties, including full scale projects and minor alterations. Staff conducted 41 easement property inspections statewide.

New easements accepted for 2010 include the following:

NEW MHT EASEMENTS IN 2010					
COUNTY	EASEMENT NAME	SCOPE OF EASEMENT	RECORDATION DATE	SOURCE	ACRES
Frederick	228 West Patrick Street	Exterior	01/04/2010	Bond Bill	0.2201
Caroline	Old Caroline High School	Interior and Exterior	02/02/2010	Bond Bill and MHAA Grant	1.354
Baltimore City	John F. Goucher House	Interior and Exterior	02/23/2010	Bond Bill	0.2086
Dorchester	Hooper Island Lighthouse	Interior and Exterior	03/04/2010	Government Property Transfer	0
Baltimore City	201 N. Kenwood Avenue	Exterior	05/04/2010	Bond Bill	0.0471
Harford	Bel Air Armory	Exterior and Interior	06/04/2010	Government Property Transfer	1.1603
Anne Arundel	Galesville Rosenwald School	Exterior	06/17/2010	Bond Bill	0.9012
Montgomery	Brainard Warner Property	Exterior and Modified Interior	06/29/2010	Bond Bill	6.214
Washington	Boonsboro Trolley Station	Interior and Exterior	07/14/2010	MHT Capital Grant	0.093
Prince George's	Concord Mansion	Interior and Exterior	08/05/2010	Bond Bill	42.6784
Wicomico	San Domingo Rosenwald School	Interior and Exterior	08/31/2010	MHT Capital Grant	1.9375

#### **D. Preservation Planning**

The Office of Preservation Planning and Museum Programs (PPMP) provides a variety of preservation planning services to assist local governments and nonprofit organizations and meet certain requirements established under State and federal law. Under the federal Historic Preservation Act, MHT, acting as the State Historic Preservation Office, has certain preservation planning responsibilities, including the preparation of a State Historic Preservation Plan. The current plan, the *Maryland Historic Preservation Plan, 2005*, which the National Park Service approved in June, 2005, will guide the State's historic resource planning and protection efforts through September 30, 2012. In addition, MHT provides historic preservation planning assistance to its local government partners, particularly Maryland's eighteen Certified Local Governments. Lastly, MHT provides preservation planning assistance for State planning initiatives, such as the review of local jurisdictions' comprehensive planning documents submitted through the State Clearinghouse, and contributes to State planning documents.

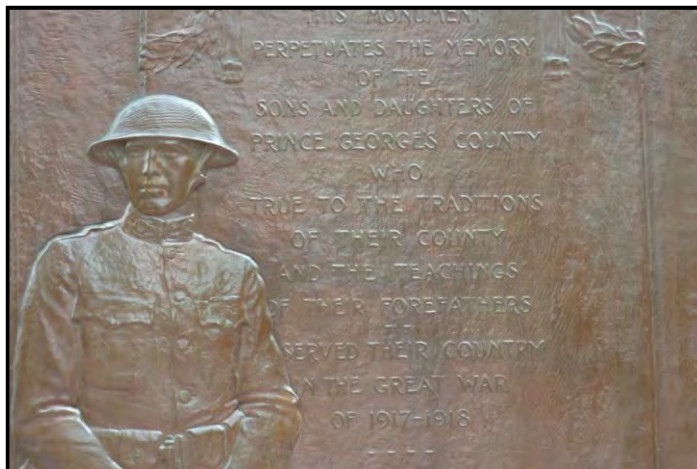
During 2010, as part of its preservation planning responsibilities, PPMP staff:

⇒ Assisted Allegany, Anne Arundel, Calvert, Charles, Dorchester, Howard, Montgomery, Queen Anne's, and St. Mary's counties and the City of Annapolis in developing historic preservation policies and planning elements through the administration of Non-Capital Historic Preservation and Certified Local Government grants used to survey and evaluate local architectural and archeological resources.

⇒ Throughout 2010, the Trust provided technical assistance to local governments through review and comments on comprehensive plans, site visits, training, and policy support. PPMP staff assisted the residents and staff of the City of Aberdeen, Allegany County, Annapolis, Baltimore City, Baltimore County, Bel Air, Berlin, Cambridge, Calvert County, Carroll County, Chestertown, Cumberland, City of Frederick, Frederick County, East New Market, Easton, Elkton, Emmitsburg, Frostburg, Gaithersburg, Hagerstown, Harford County, Havre de Grace, Kent County, Laurel, Montgomery County, New Market, Prince George's County, Princess Anne, Queen Anne's County, Rockville, St. Michaels, Salisbury, Snow Hill, Sykesville, Talbot County, and Washington County.

#### **E. Monuments Conservation**

MHT staff provide support to the Governor's Commission on Maryland Military Monuments, which was created in 1989 to inventory the approximately 400 military memorials honoring Maryland's veterans, to raise funds and manage restoration and preservation of those in need, and to develop educational and tourism materials relating to their history. The Commission continues to be administered by the Department of Veterans Affairs, whose budget includes an annual allocation for monuments preservation approved by the Maryland General Assembly. Repairs and conservation treatment are administered by conservation and historic preservation professionals under the direction of the Maryland Historical Trust. From 1989 through 2010, the Commission has sponsored, in whole or in part, the conservation treatment of ninety-eight Maryland memorials. Treated bronze monuments have been placed on a maintenance program to ensure their continued preservation.



*(Prince George's County World War I Memorial, Upper Marlboro)*

In 2010, MHT staff coordinated conservation maintenance and treatment for thirteen previously treated outdoor bronze, copper and stone sculptural monuments and plaques: The Methodist Cemetery Gate Civil War tablets in North East; the World War I Doughboy Memorial in Elkton; the World War I Monument in Chesapeake City; the Harford County World War I Monument in Bel Air; the John Rogers Post GAR Civil War Monument in Havre de Grace; the War Memorial in Salisbury; the Worcester County World War I, World War II, Korea and Vietnam memorials in Snow Hill; the Talbot Boys Civil War Monument in Easton; the Spirit of the American Doughboy Monument in Crisfield; and the Prince George's County World War I Memorial in Upper Marlboro.

## F. Maryland Archaeological Conservation (MAC) Lab

The Maryland Archaeological Conservation (MAC) Lab, administered by JPPM, houses the state's archeology collection, which includes over eight million objects collected over the past 100 years. The MAC Lab serves as the statewide support facility for artifact conservation. In April of 2010, JPPM and the Maryland Archaeological Conservation Laboratory were the focus of Maryland Archeology Month, creating a poster and booklet that were distributed throughout the state. The park was also the venue for the Archeological Society of Maryland's annual field session. For eleven days in late May, over 50 volunteers and avocational archaeologists logged 1,500 hours at the Smith St. Leonard site, learned lab methods in the MAC Lab, and attended a variety of workshops and lectures. Lab staff conserved artifacts from the state collection, the Mariner's Museum, East Carolina University, Fort Frederick, New York, Historic Charleston, and the National Park Service.

MAC Lab staff also:

- ⇒ Received for cleaning and stabilization the remains of an 18th-century wooden ship that had been uncovered the previous month at the World Trade Center Site in New York City.
- ⇒ Provided lab tours to 1,116 individuals, conducted outreach activities in local schools, and developed marketing materials for the Lab.
- ⇒ Expanded and improved the Maryland Archeobotany website using funding from an anonymous donor, the creation of which was made possible by an earlier grant from the donor.
- ⇒ Made significant strides in increasing the number of animal species in the park's paleofaunal collection, as well as making the collection more accessible through detailed cataloging, using additional funding from the anonymous donor.
- ⇒ Made significant progress in a pilot project to place archaeological exhibits in two counties as part of a grant funded by Preserve America.
- ⇒ Completed the publication of a popular booklet on the Oxon Hill Plantation excavation.
- ⇒ Attracted 109 volunteers, contributing 572 hours in excavating and analyzing an 18<sup>th</sup>-century site through JPPM's Public Archaeology Program.
- ⇒ Added one section to the Diagnostic Artifacts in Maryland webpage on sponge decorated earthenwares. Funding from the Maryland Historical Trust Board was used to begin the creation of a projectile point Diagnostic webpage.
- ⇒ Participated in a joint project with St. Mary's College of Maryland to search for seventeenth-century archaeological sites in the Zekiah Swamp in Charles County.
- ⇒ Received 45 new archaeological collections in 2010.



*(Unpacking of 18th-century wooden ship from World Trade Center site at the Maryland Archaeological Conservation Lab)*

### III. ENHANCEMENT

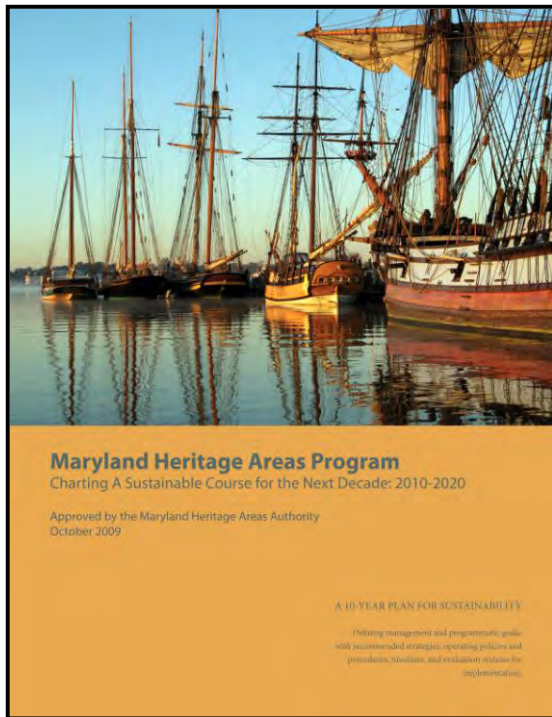
#### A. Maryland Heritage Areas Program

The Maryland Heritage Areas Program was created in 1996 to protect Maryland's historic, cultural and natural sites while leveraging compatible State and non-State investment in the development of heritage tourism destinations that encourage visitors to make Maryland their destination, stay longer, and in doing so, strengthen the economy. To participate in the program, partnerships of local government and private sector interests must complete and adopt a prescriptive management plan and create and sustain a local management entity to implement the plan, with 50-50 cost-sharing with the State. Unlike other state and federal heritage area designations, Maryland's heritage areas can best be described as "heritage enterprise zones" where investment is targeted into tightly defined geographic areas in order to produce measurable preservation and economic development benefits through heritage tourism within a short timeframe.

The Maryland Historical Trust provides staff support to the Maryland Heritage Areas Program, which entered its fourteenth year of operation in the year 2010. At the close of 2010, the Maryland system of Heritage Areas consisted of two Recognized Heritage Areas and eleven Certified Heritage Areas. Maryland's Certified Heritage Areas now include Canal Place in Cumberland, the Lower Susquehanna Heritage Greenway in Harford and Cecil counties, the Four Rivers Heritage Area encompassing Annapolis, London Town, and south Anne Arundel County, the Baltimore City Heritage Area, the Anacostia Trails Heritage Area in Prince George's County, the Lower Eastern Shore Heritage Area in Somerset, Wicomico, and Worcester counties, the Heart of Chesapeake Country Heritage Area in Dorchester County, the Heart of the Civil War Heritage Area in Carroll, Frederick, and Washington counties, the Montgomery County Heritage Area, the Southern Maryland Heritage Area in Calvert, Charles, and St. Mary's counties, and the Stories of the Chesapeake Heritage Area in Caroline, Kent, Queen Anne's, and Talbot counties.

Utilizing a grant from the Maryland Heritage Areas Authority, the Garrett County Recognized Heritage Area continued work in 2010 with the consulting firm of Peter Johnston and Associates, Inc. to develop a heritage area management plan, which serves as a roadmap for future development in the heritage area and is a prerequisite to obtaining full Certified Heritage Area status from the State. A Management Plan Technical Advisory Committee is overseeing the project. Membership includes the Chamber of Commerce, performing and fine arts organizations, a Garrett County Historical Society representative, a County representative appointed by the County Council,

representatives of the eight incorporated towns in Garrett County, and other key stakeholder representatives. A draft Management Plan was completed and submitted to the Maryland Heritage Areas Authority for review and comment in November 2010. The Authority will provide guidance to the Garrett County Management Plan Technical Advisory Committee and their consultant regarding any necessary management plan revisions, will conduct an on-site briefing and review tour of locations and sites proposed for inclusion in the Certified Heritage Area, meet with local officials, and hold at least one public hearing in Garrett County to solicit public comments. The Authority anticipates taking final action on the request to certify the Garrett County Heritage Area at its July 2011 meeting. When approved, the Garrett County Heritage Area would become Maryland's 12<sup>th</sup> Certified Heritage Area.



(Cover of MHAA Strategic Plan)

In 2010, the Maryland Heritage Areas Authority continued to implement its 10-year strategic plan, *Maryland Heritage Areas Authority: Charting a Sustainable Course for the Next Decade 2010 – 2020*. Developed with assistance from a National Park Service *Preserve America* grant totaling \$75,000, MHAA formally approved the strategic plan at its October 15, 2009 meeting. The plan was printed and distributed in the spring of 2010.

The approved 2010-2020 Strategic Plan is divided into five component parts which recommend strategies in the areas of management, stewardship, heritage tourism marketing and product development, communication, and performance evaluation. In each section, the strategies are presented in priority order and according to a proposed schedule for gradual implementation over a ten-year period, according to short, mid, and long term goals. Each strategy section identifies the context and rationale for the proposed strategy, responsible parties and timeline for implementation, and expected beneficial results. Flexibility in the plan's implementation timetable and, in some cases, in the application of proposed strategies will be maintained to achieve outcomes that will strengthen the Program. Implementation of the 2010-2020 Strategic Plan promises to result in a re-invigorated and more intensely focused Maryland Heritage Areas Program that is better prepared to meet the challenge of managing a mature system of state Heritage Areas and sustaining that system over time.

In 2010, a total of 100 grant applications were submitted totaling \$5,058,877 in requests for the funding of heritage tourism projects and activities statewide. The Maryland Heritage Areas Authority awarded \$2,829,739 in matching grants funds to 57 projects statewide that foster economic development through heritage tourism. These 2010 grants leveraged \$6,928,626 in non-State matching fund investment in Maryland communities.

In 2010, Maryland Heritage Areas Authority and Maryland Historical Trust staff continued to serve on a number of committees and working groups of other partner heritage tourism programs. These include the National Park Service Chesapeake Bay Gateways and Water Trails Program Working Group, the Maryland Scenic Byways Advisory Committee, the Harriet Tubman State Park Planning Committee, and the Transportation Enhancement Grants Advisory Committee.

### **B. Rehabilitation Tax Credits**

The Sustainable Communities Rehabilitation Tax Credit Program is one of the State's most powerful economic development and community revitalization tools. The State Tax Credit Program, complemented by the Federal Rehabilitation Tax Credit Program, assists in the preservation of historical resources by providing financial incentives to property owners. These programs are some of the very few financial incentive tools that the Trust is able to provide to encourage historic preservation capital activity by for-profit businesses and private individuals.

Legislation passed in 2010 under the Sustainable Communities Rehabilitation Tax Credit expanded the scope of the program to include a 10% credit for non-historic buildings located in Maryland or Baltimore City Main Street communities and established an additional 5% credit that can be added to the 20% credit available to historic projects which qualify as high performance structures (LEED Gold certified or equivalent).

Two staff people work full time to administer the program. Tax Credit Staff received over 245 new project applications, both residential and commercial, federal and state, while continuing to finalize certifications on projects from past years.

For 2010, the completed Part III certified State tax credit projects may be categorized as follows:

<b>2010 COMPLETED STATE REHABILITATION TAX CREDIT PROJECTS</b>							
	<b>No. of Projects</b>	<b>Total Proposed Expenditure</b>	<b>Average Proposed Expenditure</b>	<b>No. of Housing Units Before Rehab</b>	<b>No. of Housing Units After Rehab</b>	<b>Total Final Expenditure</b>	<b>Average Final Expenditure</b>
<b>Residential</b>	117	\$11,216,832.65	\$95,870.36	117	117	\$9,519,522.29	\$81,363.43
<b>Commercial</b>	12	\$24,854,835.90	\$2,071,236.32	16	31	\$20,816,760.00	\$1,734,730.00

For the federal tax incentives, staff approved 29 certifications of significance (Part I), 17 proposed projects (Part II) and 13 completed projects (Part III).

### C. Grants and Loans

The Trust awards financial assistance through four programs: the Historic Preservation Grant Program, the Historical and Cultural Museum Advancement Grant Program, the Historic Preservation Revolving Loan Program, and the Certified Local Government Program. The Historic Preservation Grant Program and Historical and Cultural Museum Assistance Program are funded through the Maryland Historical Trust Grant Fund. In FY 2010, the Trust gave greater consideration to projects that emphasized: increasing public awareness and appreciation of Maryland's architectural, archeological, or cultural heritage; encouraging heritage resource protection throughout the state; providing the necessary tools to preserve Maryland's heritage resources; contributions to the economic vitality of existing communities; and improving the quality of life for all Marylanders. These program priorities were emphasized in press releases and public announcements describing annual programming and funding goals. The Historic Preservation Loan Program is funded through an annual appropriation by the State legislature. The Certified Local Government Program is funded through federal appropriations.

#### 1. Historic Preservation Grant Program

The Historic Preservation Grant Program is a state-appropriated source of funding to assist capital and non-capital heritage preservation-related projects. Every year a grant round is held for approximately ninety days to allow sufficient time for the submission of applications. The grant fund's primary purpose is to provide financial assistance to local jurisdictions and nonprofit organizations for capital (i.e., bricks and mortar projects) and non-capital activities (e.g., architectural and archeological research, survey and documentation, public education, and planning projects). In FY 2010, Capital grants received a \$0 appropriation, and Non-Capital received a \$282,138 appropriation from the Maryland General Assembly. Through state cost containment measures, the appropriation was reduced to \$215,698.

##### a. Non-Capital Historic Preservation Grant Program

The Non-Capital Historic Preservation Grant Program provides grants to nonprofit organizations and local governments for research, survey, planning and educational activities involving architectural, archeological or cultural resources. Eligible activities may include architectural, archeological, or cultural resource surveys, the development of preservation plans, educational outreach programs and National Register nominations.

In Fiscal Year 2010, which ended on June 30, 2010, the Trust awarded funding to seven projects totaling \$185,698. The Trust did not award grants in Fiscal Year 2011, which began on July 1, 2010, because no grant funds were appropriated for the program. Non-Capital grants staff continued to monitor projects from previous fiscal years.

#### FY 2010: Non-Capital Grants

MHT received 19 applications requesting **\$587,540** in funding from the FY 2010 Historic Preservation Grant Fund for Non-Capital projects. Awards included seven projects for a total of \$185,698. The successful projects were:

COUNTY	APPLICANT	PROJECT	AMOUNT AWARDED
Anne Arundel County	Anne Arundel County Trust for Historic Preservation, Inc.	Archaeological Investigations, GIS Tool Expansion and National Register Nomination for Middle Woodland Period Sites	\$30,000.00
Dorchester County	Heart of Chesapeake Country Heritage and Economic Enrichment for Dorchester, Incorporated	Dorchester County Historic Sites Survey, Phase III	\$37,500.00
Dorchester County	Cambridge Main Street, Inc.	Pine Street National Register Historic District Nomination	\$9,000.00
Queen Anne's County	Queen Anne's County Board of County Commissioners	Queen Anne's County Historic Sites Survey, Phase III	\$31,198.00
Statewide	The Archeological Society of Maryland, Inc.	Investigating and Documenting Maryland's Archeological Resources	\$30,000.00

Statewide	The Society for the Preservation of Maryland Antiquities, Inc.	2010 Preservation and Revitalization Conference	\$18,000.00
Statewide	University of Delaware	Maryland Historic Preservation Easement Property Documentation Survey, Phase II	\$30,000.00
		<b>TOTAL:</b>	<b>\$185,698.00</b>

**b. Capital Grants**

The Capital Historic Preservation Grant Program offers assistance to nonprofit organizations, local jurisdictions, and business entities in their sponsorship of successful acquisition, rehabilitation, and restoration of historic properties eligible for the Maryland Register of Historic Properties. Nonprofit organizations and local jurisdictions also may receive funding for pre-development costs such as historic structure reports and studies, the preparation of plans and specifications, necessary archaeological investigations, and reasonable fees for architectural, design, engineering and other special services. Structures used for religious purposes may be eligible for MHT assistance for exterior work only.

In Fiscal Year 2010, which ended on June 30, 2010, no grants were awarded due to a lack of appropriation for the program. For Fiscal year 2011, which began on July 1, 2010, no grants were awarded due to a lack of appropriation for the program for a second year in a row. Capital grants staff continued to monitor projects from previous fiscal years.

**2. Historical and Cultural Museum Advancement Program**

Maryland is home to more than 200 private nonprofit and local jurisdiction historical and cultural museums. In an effort to encourage continued important contributions to education, research, conservation, and heritage tourism, the Historical and Cultural Museum Assistance Program provides technical assistance, services, and financial aid in the form of grants. Prior to October 1, 1996, this program was funded by an annual appropriation through the General Fund. Since October 1, 1996, the program has been funded through the Maryland Historical Trust Grant Fund, which is a combination of General Funds and GO bond funds.

In FY 2010, the program provided three types of Museum Advancement Grants to nonprofit museums and those museums operated by local governments that have been in operation for at least three years and are open to the public on a regular basis. The grants include: Education and Planning grants that support long range planning activities; Museum Project Challenge grants that support museum projects; and, Museum Enhancement Challenge grants that support program enhancements based on a percentage of operating budgets. The Historical and Cultural Museum Assistance Program received a \$224,862 appropriation from the Maryland General Assembly for FY 2010. That amount was later reduced to \$185,327 due to State cost containment measures.

For FY 2010, which began July 1, 2009, the Museum Assistance Program Review Panel (12 museum professionals from across the state) recommended funding for 22 projects totaling \$185,327. For Fiscal Year 2011, which began on July 1, 2010, the Trust awarded \$203,259 for 23 projects. In addition, Museum Assistance Program staff continued to monitor projects from previous fiscal years.

**FY 2010: Historical and Cultural Museum Assistance Program Grants**

In FY2010, the Historical and Cultural Museum Assistance Program hosted one grant round. The Program received 31 applications requesting \$270,529 in support. Twenty-two grant applications were recommended for funding at a total of \$185,327.

COUNTY	APPLICANT	PROJECT TYPE	AWARDED
Anne Arundel	Annapolis Maritime Museum, Inc.	Project Challenge	\$2,500.00
Anne Arundel	Historic Annapolis, Inc.	Enhancement Award	\$10,000.00
Anne Arundel	London Town Foundation, Inc.	Enhancement Award	\$6,759.00
Anne Arundel	Shady Side Rural Heritage Society, Inc.	Project Challenge	\$5,000.00
Baltimore City	B&O Railroad Museum, Inc.	Enhancement Award	\$20,772.00

Baltimore City	Baltimore Museum of Industry, Inc.	Enhancement Award	\$15,300.00
Baltimore City	Carroll Museums, Inc.	Enhancement Award	\$2,240.00
Baltimore City	Greater Baltimore Cultural Alliance, Inc.	Project Challenge	\$10,000.00
Baltimore City	Jewish Museum of Maryland, Inc.	Enhancement Award	\$15,005.00
Baltimore City	Maryland Historical Society	Enhancement Award	\$15,000.00
Baltimore City	Star Spangled Banner Flag House Association, Inc.	Enhancement Award	\$3,427.00
Calvert	Calvert Marine Museum Society, Inc.	Enhancement Award	\$5,000.00
Carroll	County Commissioners of Carroll County	Enhancement Award	\$4,500.00
Frederick	Historical Society of Frederick County, Inc.	Enhancement Award	\$6,032.00
Frederick	National Museum of Civil War Medicine, Incorporated	Enhancement Award	\$4,110.00
Kent	Historical Society of Kent County, Maryland, Inc.	Project Challenge	\$2,500.00
Montgomery	Montgomery County Historical Society, Inc.	Enhancement Award	\$4,714.00
Montgomery	Sandy Spring Museum, Inc.	Project Challenge	\$5,000.00
Prince George's	Accokeek Foundation, Inc.	Enhancement Award	\$13,768.00
Prince George's	Radio History Society, Inc.	Project Challenge	\$1,200.00
St. Mary's	Historic Sotterley, Inc.	Planning & Assessment	\$2,500.00
Talbot	Chesapeake Bay Maritime Museum, Inc.	Enhancement Award	\$30,000.00
		<b>TOTAL:</b>	<b>\$185,327.00</b>

### 3. Historic Preservation Revolving Loan Fund

The Historic Preservation Revolving Loan Fund offers low-interest loans to nonprofit organizations, local jurisdictions, businesses and individuals to acquire, rehabilitate, or restore historic structures listed or eligible for listing in the Maryland Register of Historic Properties. Loans are made available on a first-come, first-served basis and carry a maximum repayment term of 20 years. The loan fund is replenished by repayments and by appropriations from the Maryland General Assembly. Loans approved by the MHT Board of Trustees in 2010 include the following:

<b>2010 HISTORIC PRESERVATION LOANS</b>			
<b>COUNTY</b>	<b>BORROWER</b>	<b>PROJECT DESCRIPTION</b>	<b>AWARD</b>
Dorchester County	202 High Street, LLC	Stabilization of 202 High Street, a significant structure in the Cambridge historic district, after a major fire.	\$99,400
		<b>TOTAL</b>	<b>\$99,400</b>

### 4. Certified Local Government (CLG) Subgrants

The Certified Local Government (CLG) Program is a federal-state-local preservation partnership. The CLG Program allows local governments to participate directly in preservation decisions otherwise exercised by state government and to receive special federal matching moneys for various local preservation activities. Eighteen of Maryland's 47 historic preservation commissions currently participate in the CLG program. Each year, the State of Maryland makes at least 10% of its annual apportionment of the federal Historic Preservation Fund available to Certified Local Governments (CLGs) through the CLG Subgrant Program. Any of Maryland's eighteen CLGs that continue to meet minimum standards under its certification agreement with MHT are eligible to apply for funding for local preservation projects.

In 2010, CLG grants staff monitored five projects that received FFY 2009 grant funding. In that year, four of the state's certified local governments requested \$89,250 for local projects. MHT awarded \$61,900 in available funds to four CLGs for local projects. In addition, \$10,532 was awarded to the Maryland Association of Historic District Commissions, acting as a designated third party, to pay for CLG commissioners' attendance at educational training programs around the state. Non-federal funds leveraged by these projects totaled \$64,083. The projects were funded in July 2009 and closed in September 2010.

CLG grant projects supported in FFY2009 included:

<b>FFY 2009 CLG SUBGRANTS</b>		
<b>SUBGRANTEE/BY COUNTY</b>	<b>SUBGRANT PROJECT</b>	<b>AWARD</b>
<b>Allegany County</b>		
City of Cumberland	Historic and Environmental Preservation Training Institute – A Master Class for Crafts and Trades	\$15,000
<b>Calvert County</b>		
Calvert County	Multimedia Publications on Cultura and Agriculture in Calvert County: Phase 1	\$6,500
<b>Montgomery County</b>		
Montgomery County	Dickerson Locational Atlas District Survey	\$23,000
<b>Washington County</b>		
Washington County	Rural Community Survey, Phase 5	\$17,400
<b>Statewide</b>		
Maryland Association of Historic District Commissions	CLG Education and Training Grants	\$10,532
	<b>TOTAL</b>	<b>\$72,432</b>

In addition, CLG staff administered the FFY 2010 funding round, resulting in the award of nine additional projects in spring and summer 2010.

#### **D. Geographic Information System**

The MHT Geographic Information System (GIS) consists of computerized maps and databases containing information on Maryland’s historical and archeological resources, and information on other mapped management areas, including Heritage Areas. The GIS converts historic sites inventory, maps and management information into an integrated computerized format that is widely accessible to staff, other professionals, federal, state, regional and local programs, private consultants, and the general public for preservation, evaluation, and interpretation.

In 2010, staff continued maintenance of 11 GIS layers and associated databases for heritage areas, historic sites inventories, and financial assistance projects. GIS data layers were posted on the iMAP server, where they will be made available to government agencies as part of a coordinated state agency GIS service. GIS staff also ran an analysis at the request of the Climate Change Commission to assess the potential impact of sea level rise of 0-5 ft. on historic sites. The results were presented at a number of venues and further analysis is planned for the coming year.

In 2010, work began on a \$78,000 grant from Preserve America to provide internet access to the entire updated library of documentation contained in the Maryland Inventory, including National Register forms, determinations of eligibility, and inventory form text, photos, and maps. Specific planned activities for the coming year are the scanning of the Maryland Inventory of Historic Properties forms for Baltimore City, and the restructuring and redesign of the internal MEDUSA database system for the internet. This project will serve to directly educate the general public about the historic resources in their own communities. It will also create increased opportunity for Preserve America communities, historic preservation commissions, heritage areas, Main Streets, and others to utilize historic property information to support their resource protection and heritage tourism development goals.

## E. Outreach

A primary objective of the Trust is to reach out to preservation professionals, local governments, nonprofit organizations and the general public to help them understand and appreciate the tangible remains of Maryland's past. The Trust accomplishes this in many ways, including the hosting of public programming and events, collaborating with interested partners, releasing publications, maintaining a website and the MHT library and archive, and providing technical assistance.

Over the course of 2010, Trust staff conducted the following outreach activities:



⇒ Sponsored and assisted in the execution of the 2010 Annual Preservation and Revitalization Conference, held in Easton at the Tidewater Inn and Avalon Theatre on May 20—21, 2010. Staff also assisted with planning the 2011 conference which will be held in Annapolis, including attending planning meetings with conference co-sponsors to develop educational programs, identifying budgetary needs and fundraising opportunities, and coordinating facilities reservations.

⇒ Continued leadership of an *ad hoc* tobacco barn coalition, which includes representatives from the National Trust for Historic Preservation, Preservation Maryland, as well as preservation planners and local organizations from Anne Arundel, Calvert, Charles, Prince George's, and St. Mary's counties. The coalition was formed in response to the listing of the Tobacco Barns of Southern Maryland on the National Trust for Historic Preservation's 2004 list of *America's 11 Most Endangered Historic Places*. The coalition's goal is to raise awareness and develop strategies to preserve these disappearing resources. The coalition created the Tobacco Barn Restoration Fund, which in 2005 received a \$200,000 Save America's Treasures grant as well as private contributions. In 2010, the coalition completed a historic context on the development of tobacco barns in Southern Maryland and National Register nomination of five tobacco barns through a Non-Capital Historic Preservation Grant to Preservation Maryland. The coalition also hosted a second Tobacco Barn Summit on April 30, 2010. Approximately 100 participants discussed how the coalition could lead future efforts to preserve Southern Maryland tobacco barns. MHT staff also continued to monitor an MHT Capital Grant for the restoration of tobacco barns.

⇒ Continued MHT's educational partnership with the Maryland Association of Historic District Commissions (MAHDC). Staff managed the section of the MHT web site that provides technical assistance to historic preservation commission staff and commissioners and interested members of the public. The page includes useful information, sample documents, links to resources, and other published materials. Staff also managed a listserv to facilitate communication and to encourage the sharing of information among historic preservation commission members and staff.

⇒ Presented 11 awards in seven categories during the 35<sup>th</sup> Annual Maryland Preservation Awards ceremony at the Annual Preservation and Revitalization Conference in Easton. Maryland Preservation Awards are presented in seven categories:

- The Calvert Prize is presented to an individual, organization, agency or institution for paramount leadership in or contributions to the preservation of Maryland's architectural and cultural heritage at the statewide level.
- Preservation Service Awards recognize individuals, organizations, agencies, and institutions for laudable activities or accomplishments that advance the public's appreciation, understanding, and involvement in historic preservation.
- Heritage Book Awards are presented to the author and primary supporting or sponsoring entity for heritage books of scholarly or general interest, the focus of which is Maryland architecture, archeology or cultural heritage.
- Educational Excellence Awards recognize projects that educate the public about any aspect of Maryland's heritage.

- Project Excellence Awards recognize exemplary restoration, rehabilitation or adaptive reuse projects.
- Preservation Partnerships Awards are presented annually to individuals, organizations, agencies, or institutions in recognition of meaningful collaborations, partnerships, and relationships developed between governments, nonprofit organizations, and/or the private sector during the course of a project's planning, development, and/or execution.
- Stewardship of Easement Properties Awards recognize outstanding effort and intent toward the maintenance and preservation of Maryland Historical Trust easement properties.
- The Stewardship of Historic Properties by a Government Agency Award is presented annually to a municipal, county, State, or Federal government or an agency thereof in recognition of a demonstrated commitment to preserve historically significant buildings, sites, structures, and objects under their ownership or direct care.

The 2010 awards are as follows:

2010 Maryland Preservation Awards		
Award Category	Title	Recipient
Preservation Service		Birch Hotz <i>Frederick County</i>
Preservation Service		Heritage Tourism Alliance of Montgomery County <i>Montgomery County</i>
Heritage Book	<i>The Oyster Question</i>	Christine Keiner
Heritage Book	<i>Edmund G. Lind: Anglo-American Architect of Baltimore and the South</i>	Charles Belfoure
Stewardship of Historic Properties by a Government Agency		Prince George's County Department of Parks and Recreation
Preservation Partnership	Miller's Court	Seawall Development <i>Baltimore City</i>
Project Excellence	Rehabilitation of the American Brewery <i>Baltimore City</i>	Humanim Cho, Benn, Holback
Project Excellence	Rehabilitation of the Maryland Building at the Maryland Zoo <i>Baltimore City</i>	Maryland Zoo in Baltimore
Project Excellence	Restoration of the Mackall Barn at Historic St. Mary's City <i>St. Mary's County</i>	Historic St. Mary's City Commission
Project Excellence	Rehabilitation of 221 George St, Chesapeake City <i>Cecil County</i>	Alan Marine and Catherine Soukup
Special Recognition		Jewish Museum of Maryland <i>Baltimore City</i>

⇒ Continued to manage the MHT Press publications program, distributing and producing publications related to Maryland's historic, architectural, archeological and cultural resources and maintained the MHT Press webpage. The MHT Press published two books in 2010—*I'm Goin' Down County: An Architectural Journey through St. Mary's County Maryland* and *Oxon Hill Manor: The Archaeology and History of 'A World They Made Together'*. One book is slated for publication in 2011—*Annapolis: City on the Severn*. Staff participated as a publisher at the Annual Preservation and Revitalization Conference and the Annual Workshop in Archeology, and continued development of a revised MHT Press webpage. Staff also continued development of several new MHT Press publications, including: archeological investigations at the Hughes Site; a popular report on the archeology at the Benjamin Banneker homestead; an architectural history of Charles County; and a history and travel guide for the War of 1812.

⇒ Provided technical assistance for museums on projects that ranged from strategic planning, regional consortium building, and board development. In addition, museum assistance program staff participated in a working group planning for the Harriet Tubman Underground Railroad Discovery Center in Dorchester County. This effort resulted in a National Park Service Cultural Resource Study to develop a National Historical Park to honor Tubman in two venues, her home in Auburn, New York, where she retired, and the area on the Eastern Shore where she was born into slavery and where she returned to lead other slaves to freedom. Museum Assistance Program staff has assisted JPPM staff with two federally funded projects. –Connecting to Collections,” focuses on creating plans for Maryland museums, libraries and archives to use in case of emergency. The second project, —County Archeology Collection Exhibit” (CACE) will be launched in early 2011 to create public exhibitions of archaeological materials now stored in the MAC lab for St. Mary’s and Washington counties. The Program staff has been working with the American Association for State at Local History to pilot state-wide training programs for a new self-assessment program known as StEPs (Standards and Excellence Program for History Organizations).

⇒ Co-sponsored three fall workshops around the state in partnership with the Maryland Heritage Areas Authority the Maryland Humanities Council, Preservation Maryland, the Department of Housing and Community Development and the Maryland State Highway Administration on funding opportunities for heritage preservation activities. Workshops were held in Williamsport, Salisbury and Havre de Grace and offered an overview of state and private funding programs, eligibility requirements and application guidelines.

⇒ The MHT website, redesigned and re-launched in June 2009, received more than 107,000 visits from nearly 69,000 unique users in 143 countries throughout 2010. Ninety-six percent (96%) of the total visits (103,000) were from users based in the United States, with visitors from 52 States and territories.

**Visits to MHT website in 2010 by State (top 10)**

State	Total number of visits	Percentage of total visits
Maryland	59,393	55%
District of Columbia	8,155	8%
Virginia	6,162	6%
New York	5,474	5%
Pennsylvania	4,167	4%
Florida	2,150	2%
California	2,401	2%
Texas	1,189	1%
New Jersey	1,161	1%
Massachusetts	1,118	1%

Pages on the MHT website were viewed a total of 276,612 times throughout 2010 and users spent an average of 90 seconds on each page.

**Most viewed page on MHT website in 2010**

Topic	Total number of pageviews	Percentage of total pageviews
Maryland Inventory of Historic Properties Search	14,730	5%
Information for owners of historic properties	12,768	5%
National Register of Historic Places	11,930	4%
Tax Credits for Rehabilitation Projects (general information page)	11,357	4%
What’s New at MHT	6,266	2%
About Historic Preservation in Maryland	6,261	2%

Grant Programs	6,257	2%
Local Historic Preservation programs	5,614	2%
Archeology	4,733	2%
Maryland Heritage Areas Grant Program	4,613	2%

⇒ Expanded the MHT Library and Archive’s collection of books, site-specific reports, architectural drawings, videos, oral histories, etc., to 11,114. The library’s 4,398 site-specific reports were heavily used by consultants, as was Medusa, the in-house database of the Maryland Inventory of Historic Properties (architectural and archeological). The library staff continued to receive positive feedback from the public regarding the online catalog and the staff’s ability to e-mail PDF versions of architectural survey and archeological site forms. Approximately 500 visits were made to the library by consultants and the general public, and the staff also responded to e-mail and telephone requests for information. The Inventory Registrar retired June 30, 2010, and the position will be filled effective January 5, 2011.

⇒ Organized and staffed a public archeological lab for volunteers every Tuesday throughout 2010.

⇒ Served as lead in planning and organizing an 11-day intensive field investigation open to the public held from late May to early June. Sixty-three volunteers contributed 1500 hours of excavation and lab effort during the investigation of an 18<sup>th</sup> century domestic site in Calvert County. Staff also coordinated the scheduling of lectures and workshops presented to participants (13 lectures/workshops presented).

⇒ Co-sponsored, with the Archeological Society of Maryland, the 45th Annual Spring Symposium on Archeology entitled “*Before Pots: Archaic Period Lifeways in Maryland.*” The public was invited to learn about the archeology of prehistoric life in Maryland between 10,000 and 3,000 years ago. More than 80 members of the public attended.



*(Archeology field session volunteers on site in Calvert County)*

⇒ Co-sponsored, with the Archeological Society of Maryland, the 19<sup>th</sup> Annual Workshop in Archeology in March. Approximately 150 attendees were offered a combination of lectures and hands-on sessions including such wide-ranging topics as remote sensing techniques in archeology, the archeological investigation of 19<sup>th</sup> century African American spiritual beliefs and prehistoric life along the Patuxent River, the prehistoric use of soapstone and ceramics, and an overview of historic archeology in Maryland.

⇒ Co-sponsored Maryland Archeology Month celebrating the important archeological heritage created by Maryland’s diverse inhabitants over the last 12,000 years. MHT solicited participation by event sponsors, created and distributed 4,500 posters and 4,500 booklets, and worked with its partner organization the Archeological Society of Maryland to create a web-based calendar of events that featured both map views by region and listings by date. Through the 2010 Archeology Month theme – “From Shovel to Showcase” – Marylanders were invited into the Maryland Archaeological Conservation Laboratory for an in-depth consideration of the Lab’s four program areas, including (1) Research, (2) Conservation, (3) Curation, and (4) Education. The Archeology Month booklet included two essays about each program area, written by professional staff of the Lab, and was designed give the public an insider’s understanding of each. The website ([www.marylandarcheology.org](http://www.marylandarcheology.org)) also featured a gallery of unusual artifacts that expanded on the Archeology Month theme.

⇒ Distributed information on the Trust's Archeology programs in response to 17 archeological inquiries from the interested public received through the Trust's website, as well as many other received via telephone and written requests. Archeology staff continued to use a variety of media to disseminate information on Maryland archeology, including a statewide historical journal (*Maryland Archeology*), an Internet website, on-line *Preservation Bulletins*, and by presenting lectures statewide to a variety of audiences including school groups, colleges and civic organizations.

⇒ Participated in the re-design of the Certified Archeological Technician, or CAT, program. This program is designed to train the interested public in archeological methods and theory. Through the Certified Archeological Technician, or CAT, program, the professional archeological community in Maryland provides the serious avocational archeologist with in-depth content on the modern practice of archeology, and the many successes of the discipline. Lectures, hands-on field and laboratory exercises, and guided reading are all part of this program. Presented several workshop lectures as part of the CAT program.

⇒ Staff continued to publish research in scholarly journals. Charlie Hall presented a paper entitled "Maryland's Appropriate Place of Repose for Archeologically Removed Native American Human Remains" at the NAGPRA in West Virginia conference in June. Dennis Curry published an article entitled "Original Ossuaries in Maryland: An Update." (*Maryland Archeology* 44(1):1-10). Dennis Curry presented a paper (with Julia A. King) entitled "Forced to Fall to Making of Bows and Arrows: The Material Conditions of Indian Life in the Chesapeake, 1660-1710." (The Omohundro Institute of Early American History and Culture conference on "The Early Chesapeake," St. Mary's City, Maryland). Staff also edited and produced Maryland Archeology journals for 2009 and 2010. Published "Birdstones: Some Clarifications from Maryland" in *Pennsylvania Archaeologist* 80(2):50-60 [Fall 2010]. Submitted an article entitled "Mason Island Burial Practices" to the *Archeological Society of Virginia's Quarterly Bulletin*. Completed revision and submitted final version of a book chapter "The Practice of Ossuary Burial: Examples from the Middle Atlantic Region" to be included in *Secondary Burial in Eastern North America* (University of Nebraska Press).

## F. Historic Marker Program

MHT staff continued to administer the Maryland Roadside Historic Marker Program, which seeks to commemorate people, events, and places of special significance to the state through the erection of roadside markers. The program, originating in 1933 with the State Roads Commission and later administered by the Maryland Historical Society, was transferred to MHT in 1985. Staff reviews Maryland Roadside Historic Marker proposals to ensure the accuracy of the information and the statewide significance of the resources to be commemorated. MHT funds new markers and works in partnership with the State Highway Administration to locate, repair, and replace markers that have fallen victim to weathering, accidents, and vandalism.

In 2010 six new and two updated replacement markers were installed: OLD WALLVILLE SCHOOL, CA. 1880-1934, commemorating the oldest standing one-room schoolhouse dedicated to African American students in Calvert County; COURTHOUSE AT MOORE'S LODGE, site of the first Charles County courthouse, built in 1674; WASHINGTON, BALTIMORE AND ANNAPOLIS ELECTRIC RAILROAD, 1908-1935, a technologically-advanced high-speed line providing passenger and freight service and instrumental in the opening of Camp Meade in Anne Arundel County; CIVILIAN CONSERVATION CORPS, placed in Swallow Falls State Park and commemorating the national program



*(Dedication of Marshyhope Creek Bridge Historic Marker)*

launched by FDR to perform emergency conservation work on public lands, employing millions during the Depression and setting the standards for the development of our state and national parks and forests; CAMP HOLABIRD, established 1917 in Dundalk as the nation's first motor transport training center and depot during World War I and a center for the research and development of military vehicles; MARSHYHOPE CREEK BRIDGE, built in 1910 by the Luten Bridge Company as part of the newly-formed State Roads Commission's plan to improve the state highway system; PISCATAWAY, a Colonial port established in 1707 and a tobacco inspection station by 1747; PEACH BOTTOM SLATE REGION, where a high quality slate, especially valued for roofing, was quarried in Harford County as early as 1734 and continuing into the early twentieth century.

### **G. Jefferson Patterson Park & Museum (JPPM)**

As the State Museum of Archaeology, Jefferson Patterson Park and Museum (JPPM) preserves, researches, and interprets the diverse cultures of the Chesapeake Bay region. Located on 560-acres along the Patuxent River in Calvert County, JPPM contains over 70 documented archeological sites spanning 9,500 years. The rich archeological, agricultural, and historical resources of the property are interpreted to the public through a wide range of exhibits, educational programs, and services.

JPPM welcomed 48,638 visitors in the 2010 fiscal year, including heritage events, tours, public archeology, school programs, and outreach.

JPPM is currently constructing a new permanent War of 1812 exhibit, funded through a grant from the Maryland Heritage Areas Authority. The exhibit and accompanying programming will be completed by 2011 and the commencement of the statewide War of 1812 Bicentennial Commemoration.

In the late summer of 2009, Jefferson Patterson Park and Museum (JPPM) teamed up with Calvert County Public Schools (CCPS) to create a cell phone tour "Walking in their Footsteps: A Patuxent Community" for the recreated Indian Village and the tour debuted in June 2010.



*(JPPM Staff working with Calvert County Public School student at recreated Indian Village site)*

The annual Patuxent River Wade-In with Senator Bernie Fowler gained a new permanent home at JPPM in 2010.

The park had its second annual Discovering Archeology Day in April, with 350 people in attendance enjoying hands-on archaeological activities and displays brought in by archaeologists from all over the state.

The Park received a grant from the Chesapeake Bay Trust for \$50,000 for the design of a living shoreline along St. Leonard Creek.

During the 2010 open season, Jefferson Patterson Park and Museum held its second year of full week summer camps, with all three camps receiving enthusiastic praise from the parents and campers alike.

Executive Director Michael A. Smolek, who had worked at the park for 27 years, left in late April to take a job with the Navy. Special Events coordinator Megan Williams also departed in late July.

JPPM also:

- ⇒ Hosted over 100 events for 2010, including workshops, special events, lectures, open houses, house tours, special volunteer opportunities and other public programs.
- ⇒ Installed a new roof in the Exhibit Barn received in preparation for the 2011 opening of the new War of 1812 exhibit, funded through a Maryland Heritage Areas grant.
- ⇒ Continued work with volunteers on the Patterson Garden Restoration Project. Assistance was also provided by JPPM maintenance staff, Community Service Workers, and special volunteers from the Calvert Detention Center. The flower beds, shrubs, and trees are gradually being brought back from neglect.
- ⇒ Worked with volunteers to build a new wigwam that had been lost in the heavy snows the previous year.
- ⇒ Continued the close relationship with Calvert County schools by working with Calvert County teachers to create new lesson plans for the Chespax program, while working with all the 6th grade students in the county.
- ⇒ Continued cataloging, documenting, and re-housing of the Patterson House collections.
- ⇒ Received \$55,000 from the Marpat Foundation to support various programs on the park.