



MARYLAND
HISTORICAL
TRUST

ANNUAL
REPORT
SUMMARY

FY24

MARYLAND
DEPARTMENT
OF PLANNING

Scale: 1/4"=1'

Front

J. H. Mallory
Captain of Engineers, U.S.A.
L.H. Eng'g. 5th Dist.



Founded in 1961, MHT is the state agency dedicated to preserving and interpreting the legacy of Maryland's past. MHT operates within the Maryland Department of Planning and serves as the State Historic Preservation Office charged with implementing federal preservation programs at the state level.

1.5+ MILLION

people reached through MHT, JPPM, & MAC Lab social media, newsletters, websites, blog, and outreach events

5,591

state and federal projects reviewed for impacts to historic and cultural resources

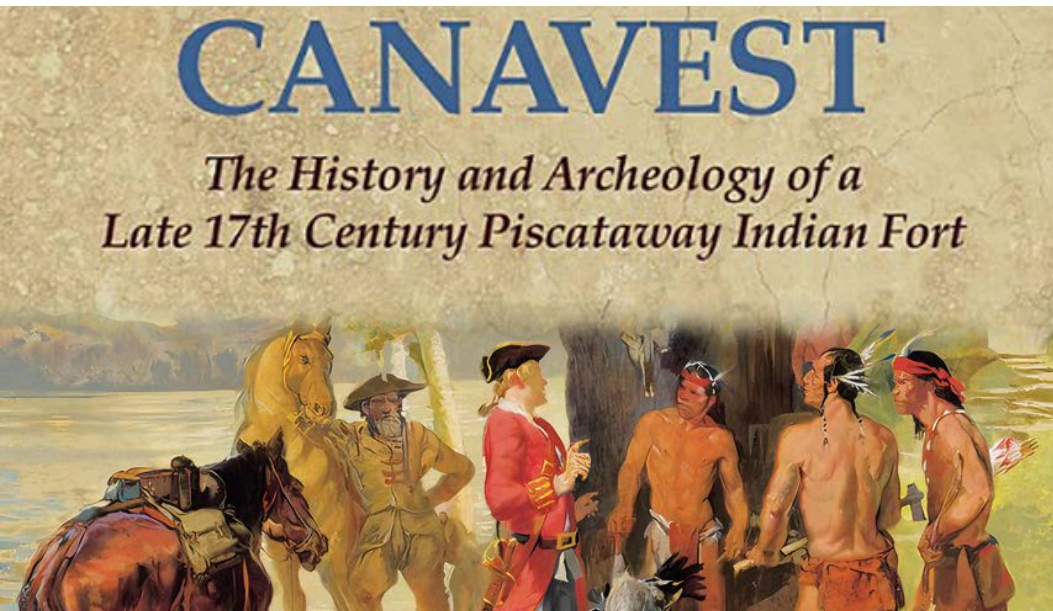
\$34+ MILLION

distributed by grants and tax credits programs



To plan for, protect, and interpret a historic place, it is necessary to understand that place's evolution, history, and significance. MHT helps researchers find this information through online tools and an on-site library. MHT also provides guidance for archaeological and architectural survey, as well as the National Register of Historic Places, and maintains the Maryland Inventory of Historic Properties.

In FY24, MHT added or updated 726 archaeological sites and architectural survey files, as well as 310 archaeological survey reports, standing structures, and survey districts covering 10,368 acres to the Medusa, the state's cultural resource information system, which are now available for download. The MHT Library continues to expand access to library collections by digitizing all 14,810 of the state's archaeological site forms. MHT also took part in ongoing research and documentation projects associated with archaeological and architectural sites.



30,000

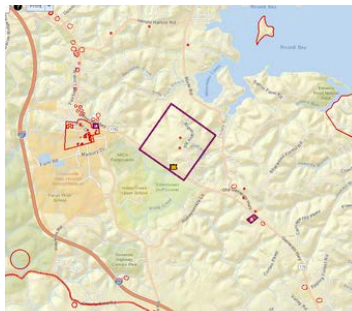
visitors to the Medusa database

17

new listings in the National Register of Historic Places

130+

new books in the MHT Library including *Canavest* by Dennis Curry, from MHT Press



Highlight: Asian American Communities in Maryland

Asian immigrants established ethnic enclaves as they came to the U.S. in the 19th and 20th centuries, largely as a result of exclusionary immigration laws and policies. While segregated, these enclaves provided a sense of community, protection, and mutual support for those navigating a new land, language, and culture. The recently completed *Asian American Communities in Maryland* Multiple Property Submission focuses on individuals of Chinese and Korean descent before 1975, highlighting Chinatowns and Koreatowns in Baltimore, Rockville, and Ellicott City, along with community organizations and buildings.



Through numerous grant programs, MHT provides funding for capital and non-capital projects, including rehabilitation and restoration work, property acquisition, technical assistance, heritage tourism, educational programs, archaeological and architectural research, and more.

In FY24, the Historic Preservation Grant Programs awarded \$604,000 to seven capital projects and \$300,000 to eight non-capital research projects, the Maryland Heritage Areas Program (overseen by the Maryland Heritage Areas Authority) awarded \$5 million to 100 capital and non-capital projects in 13 heritage areas, the African American Heritage Preservation Program (in partnership with the Maryland Commission on African American History and Culture) awarded \$5 million to 24 capital projects that are significant to the African American experience in Maryland, and the Certified Local Government Program awarded \$106,052 to jurisdictions that have made a special commitment to preservation through 16 grants to local jurisdictions.

\$11+
MILLION
in grants administered



\$31.7+
MILLION
in non-state
matching support



Success Story: Button Farm Living History Center

Button Farm (Montgomery County) in Seneca Creek State Park, interprets 19th-century plantation life, sharing the impact of enslaved labor on the landscape. In 2018, the Menare Foundation received a \$46,000 grant to repair their late-19th century barn that was about to collapse. The project involved careful work with a specialized contractor familiar with 19th-century techniques to underpin the barn's footings and repoint mortar at the foundation, and more. With restoration complete, the barn enhances the interpretation of the 19th-century farm landscape.

The purpose of the Maryland Historic Revitalization Tax Credit Program, as well as the federal tax incentives that MHT administers, is to encourage private sector investment in rehabilitating and reusing historic buildings to benefit local economies. The state tax credit program can be accessed through competitive commercial, small commercial, and homeowner credits.

In FY24, MHT awarded over \$20 million in commercial tax credits to ten projects, as well as an estimated \$1.43 million in tax credits to 35 small commercial projects and \$1.57 million in tax credits to 166 residential projects. With support from the Maryland Department of Planning's IT team, MHT planned and implemented an electronic submission process for state and federal historic tax credit applications in FY24. This new application process offers significant improvements for program users and staff.



**\$84+
MILLION**

in expected private
investment from
competitive commercial
projects



**\$23+
MILLION**

in tax credits to 211
projects

Success Story: P.S. 103 Henry Highland Garnet School

Constructed in 1877 and designed by architect, George A. Frederick, recently completed rehabilitation work at the P.S. 103 school building included restoration of remaining historic windows, including the original glazed classroom partitions; restoration and replacement of the original tin ceiling; introduction of new mechanical, electrical, and plumbing systems; and more. Today, P.S. 103 has been re-established as a community landmark used for public meetings, community programming, office space, and to showcase historic memorabilia of alumni Justice Thurgood Marshall and the Honorable Elijah Cummings.



MHT supports preservation planning at the state and local levels by preparing and monitoring the statewide preservation plan, providing technical assistance to local governments, implementing the voluntary Certified Local Government Program in partnership with the National Park Service, and reviewing and commenting on local comprehensive plans and amendments.

In FY24, MHT and the National Park Service designated Havre de Grace as Maryland's 23rd Certified Local Government, allowing the historic bayside community to access Certified Local Government grants and training opportunities. In April 2024, the National Park Service approved [Heritage2031](#), Maryland's new statewide preservation plan for 2024-2031. This plan serves as a guidance document for agencies, organizations, and individuals engaged in historic preservation and cultural heritage activities in Maryland.

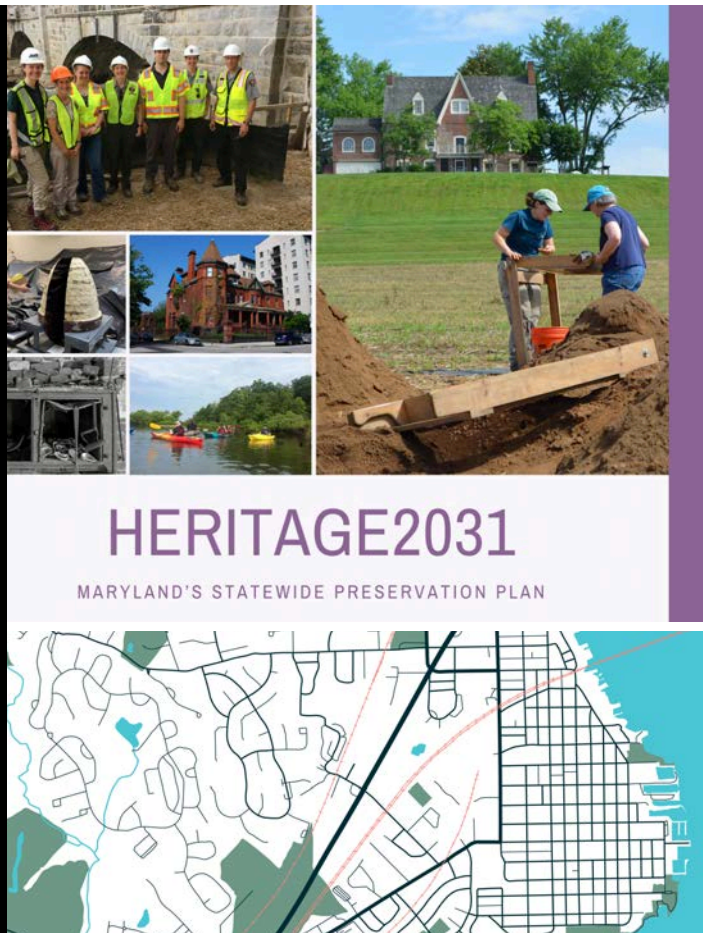
Heritage2031 includes objectives and recommended actions aligned to meet five goals:

- 1) prioritize community histories and places underrepresented in the historical record;**
- 2) support professionals and the public in historic preservation, archaeology, and cultural heritage efforts;**
- 3) use cultural heritage to enhance climate adaptation, local planning, and economic development activities;**
- 4) improve efficiency and accessibility of cultural heritage data and financial programs; and**
- 5) make the case for preservation.**

2,000+
public comments received
on the *Heritage2031* draft

296
participants at 17 focus
groups and regional
meetings

**OVER
470**
responses to six surveys



MHT manages a portfolio of preservation easements to safeguard historic properties, archaeological sites, and other cultural features, thereby supporting positive stewardship by property owners. Through consultation with state and federal agencies, project sponsors, and the public, MHT also ensures that projects avoid, reduce, or mitigate harm to historic and archaeological properties across Maryland.

In FY24, MHT acquired two new easements and modified three existing agreements. The Project Review and Compliance team consulted on more than 5,500 projects, helping to resolve adverse effects of projects on significant cultural resources where needed and establish streamlined coordination procedures for certain programs.

**709**

easements on

934

properties encompassing

7,650

acres

23**Section 106 Programmatic
Agreements*****Highlight: Pikesville Armory (Baltimore County)***

After coordination among several state agencies, Baltimore County, and the Pikesville Armory Foundation, an easement on the Pikesville Armory was recorded in October 2023.

Built in 1903, the Pikesville Armory is Maryland's second oldest armory and was listed in the National Register in 1985 due to its importance in the 20th-century reorganization and expansion of the National Guard system. This is a rare example of a surviving armory with an intact open space. The Pikesville Armory Foundation plans to turn the 14-acre campus into a community hub, which they started in 2024.



MHT provides a series of programs that engage with the public as well as with professional colleagues, including the MHT Roadshow, the Architectural Fieldwork Symposium, the Maryland Preservation Awards and the Tyler Bastian Field Session in Maryland Archaeology, and the Archaeology Workshop.

MHT hosted the Architectural Fieldwork Symposium in March 2024, which included project updates and seven presentations on a range of regional topics related to the built environment. In May, the MHT Board presented 11 awards throughout the state for the 49th annual Maryland Preservation Awards, celebrating noteworthy accomplishments in the preservation field. The archaeology field session was held in May and June at the Cresap's Fort Site, where each day about 45 volunteers worked to build on the findings of earlier investigations.

8,624
people interacted with

68

virtual, livestreamed, and
in-person MHT outreach
events

**OVER
1,000**

hours of volunteer labor



Success Story: Shipwreck Tagging Archaeological Management Program (STAMP)

Recently, MHT maritime archaeologists launched STAMP, a program focused on documenting and monitoring shipwreck sites and timbers. The public can participate as citizen scientists to help better understand the movement and condition of shipwreck timbers by attaching permanent tags to shipwreck timbers on Maryland's shores. These tags can be scanned to learn when and where the timber was tagged as well as for historical information. Two workshops on how to document and tag timbers were held at Assateague State Park (Worcester County).

A 560-acre park located on the Patuxent River in Calvert County, Jefferson Patterson Park and Museum is home to archaeological sites, historic houses and outbuildings, museum spaces, the Maryland Archaeological Conservation Laboratory, and recreational facilities. The park's mission is to connect people to the past and support the preservation of Maryland's cultural and natural resources. The MAC Lab at JPPM houses the state's archaeological collection.

In FY2024, JPPM launched a new exhibit, *Christmas Came When the Tobacco was Sold: Tobacco Farming in Southern Maryland*, alongside its 5K runs and educational programs. The MAC Lab advanced the *Witnesses of Wallville* project and began the *Engaging with Descendant African American Communities* project, partnering with MHT and the Maryland Commission on African American History and Culture. This project seeks to connect with descendants or communities tied to the remains of at least 15 individuals of African descent housed at the MAC Lab.

**130,000+**

visitors to the JPPM site for programs, tours, special events, and general usage

OVER 70

archaeological sites

**10+ MILLION**

objects representing 10,000 years of Maryland's cultural heritage housed at the MAC Lab

Success Story: Tending the Field Mosaic Mural

This community project began in June 2023, when Baltimore artist Phyllis Zhu's original artwork was selected as the foundation of the mural. Over 200 members of the public colored 576 small squares according to the color palette required by the original image. Installed in February 2024, the artwork showcases the stories of the diverse and often overlooked people who worked with tobacco, particularly local African American communities. The large and colorful image acknowledges the contribution of the people whose skills, stamina, and knowledge were central to tobacco production here in the 19th and 20th centuries.

