

2016 Annual Report of the Maryland Historical Trust

July 1, 2015 - June 30, 2016

Maryland Department of Planning

Maryland Historical Trust
Maryland Department of Planning
100 Community Place
Crownsville, MD 21032-2023
410-697-9591
www.planning.maryland.gov
www.MHT.maryland.gov



Table of Contents

The Maryland Historical Trust Board of Trustees	2
Who We Are and How We Work	3
Maryland Heritage Structure Rehabilitation Tax Credit	5
Maryland Heritage Areas Program	9
African American Heritage Preservation Program	15
Architectural Research and Survey	16
Terrestrial Archeological Research and Survey	18
Maritime Archeological Research and Survey	20
Preservation Planning	22
Cultural Resources Hazard Mitigation Planning Program	24
Jefferson Patterson Park and Museum	26
Historic Preservation Easements	28
State and Federal Project Review	33
Military Monuments and Roadside Historical Markers	34
Maryland Archaeological Conservation Laboratory	36
Public Archeology Programs	38
Cultural Resource Information Program	41
Maryland Preservation Awards	42

The Maryland Historical Trust Board of Trustees

The Maryland Historical Trust is governed by a 15-member Board of Trustees, including the Governor, the Senate President and the House Speaker or their designees, and 12 members appointed by the Governor. At least two trustees must be qualified with an advanced degree in archeology or a closely related field and shall have experience in the field of archeology. Of the trustees qualified in the field of archeology, at least one must have experience in the field of submerged archeology and at least one must have experience in the field of terrestrial archeology. The term of a member is 4 years.

Trustees Appointed by the Governor:

Albert L. Feldstein
O. James Lighthizer, Esquire
Alvin Henry Luckenbach, PhD – Vice Chairman
Larry S. Gibson, Esquire
Sarah Kunkel Filkins
The Honorable Margo G. Bailey
James Preston Delgado, PhD
Charles L. Edson, Esquire - Chairman
Charles A. Stek
Samuel J. Parker, Jr.
Brien J. Poffenberger
The Honorable Barrie Parsons Tilghman

Allegany County
Anne Arundel County
Anne Arundel County
Baltimore City
Harford County
Kent County
Montgomery County
Montgomery County
Montgomery County
Prince George's County
Washington County
Wicomico County

The Board also includes representatives appointed by the Board from areas of the State not represented by current Board members who participate to the full extent as Board members except cannot vote in full meetings of the Board.

Ex Officio Members of the Board

Not Assigned
The Honorable Thomas “Mac” Middleton
Not Assigned

Representative of the Governor
Representative of the Senate President
Representative of the Speaker of the House

Area Representatives

Harry T. Spikes, II
Martin P. Azola
Ralph E. Eshelman, PhD
Joshua D. Brown
Dean R. Camlin
G. Bernard Callan
W. Dickerson Charlton
Douglass C. Reed

Baltimore City
Baltimore County
Calvert County
Cecil County
Carroll County
Frederick County
Prince George's County
Washington County

Who We Are and How We Work

Founded in 1961, the Maryland Historical Trust is the state's agency dedicated to preserving, interpreting and promoting the legacy of Maryland's past. Led by Director and State Historic Preservation Officer Elizabeth Hughes, it is governed by a 15-member Board of Trustees. Operating within the Maryland Department of Planning and located in Crownsville, the Maryland Historical Trust serves as the State Historic Preservation Office and is charged with implementing federal preservation programs at the state level. The Maryland Historical Trust carries out this work through the following offices.

The **Office of Planning, Education and Outreach** provides planning assistance to local governments and partners with organizations and agencies to produce educational programming, including public archeology. This office offers grants for heritage tourism through the Maryland Heritage Areas Program and for planning activities through the Certified Local Government program. The five-year statewide preservation plan is produced through this office.

The **Office of Research, Survey and Registration** maintains the state's information on historic properties and archeological sites, as well as the library. This office supports new archeological and architectural surveys, maintains the Maryland Inventory of Historic Properties and forwards nominations to the National Park Service's National Register of Historic Places. Also housed in this office is the Historic Markers program, which helps share stories of Maryland's past via roadside signs.

The **Office of Preservation Services** manages the Maryland Heritage Structure Rehabilitation Tax Credit, African American Heritage Preservation and Maritime Archeology programs. The office also reviews state and federal actions for impacts to historic and cultural resources and manages the state's preservation easements.

Located on 560 acres on the Patuxent River in Calvert County, **Jefferson Patterson Park and Museum** offers events, tours, lectures, school visits and workshops related to the site's historic and prehistoric heritage. Jefferson Patterson Park and Museum is home to the **Maryland Archaeological Conservation Laboratory**, a state-of-the-art facility dedicated to archeological conservation and research.



Elizabeth Hughes Appointed As State Historic Preservation Officer, Maryland Historical Trust Director

In October 2015, Governor Larry Hogan appointed Elizabeth Hughes as Maryland's State Historic Preservation Officer and confirmed her appointment by the Board of Trustees as the director of the Maryland Historical Trust. Since 2002, Hughes served as Maryland Historical Trust's deputy director. She has a broad national perspective in historic preservation, having served on the board of the National Conference of State Historic Preservation Officers (NCSHPO) since 2004. She was elected president of NCSHPO in 2013 and represents the organization on the presidentially appointed Advisory Council on Historic Preservation.



On May 20, 2016, Deputy Secretary Wendi Peters, Emily Tocknell, Michael Day, Collin Ingraham, and Megan Klem of Planning and Nicholas Redding and Elly Colmers of Preservation Maryland were pleased to join Governor Hogan as he signed into law Senate Bill 759, the Heritage Structure Rehabilitation Tax Credit. The bill returns the name of the state's historic tax credit to its original name, expands the areas eligibility and extends the program through July 1, 2022. For the past 20 years, this tax credit program has proven to be a powerful economic development tool for counties, cities, and towns across Maryland. Designed to encourage the redevelopment and reuse of historic buildings, the program is estimated to create about 73 jobs for each \$1 million in tax credits and generate \$8.53 in economic activity for every dollar invested.

Maryland Heritage Structure Rehabilitation Tax Credit

For 20 years, tax credits have played a key role in revitalizing Maryland's communities by supporting the rehabilitation and reuse of historic properties across the state. The Maryland Heritage Structure Rehabilitation Tax Credit Program (previously known as the Maryland Sustainable Communities Tax Credit), which includes competitive commercial, small commercial and residential tax credits, has helped restore more than 4,316 homeowner and 652 commercial historic structures, preserving buildings that contribute to the distinct character and economic vibrancy of Maryland's towns, cities, and rural areas. The Abell Foundation has estimated that each \$1 million invested in tax credits creates about 73 jobs, and that every dollar invested yields approximately \$8.53 in economic activity (The Abell Report, March 2009, Vol 22, Number1).

Competitive Commercial

Each year, owners of income-producing properties can compete for a state income tax credit (capped at \$3 million) that is equal to 20 percent of eligible rehabilitation expenses for substantial rehabilitation projects. For the fiscal year 2016 round (awarded in 2015), 19 applicants sought a total of \$32,457,724 in tax credits for construction projects having a total estimated cost of \$174,140,113. The Maryland Historical Trust awarded more than \$9 million in tax credits for 2016, expected to leverage private investment of more than \$40 million in the following projects.



Lion Brothers Company Building, Baltimore City



Lion Brothers Company Building, Hollins Street, Baltimore City (\$1,044,666.00 in tax credits awarded)

Constructed in 1886 as a livery stable, this property is most commonly associated with the Lion Brothers Company, which occupied the building from 1904 until 1958. The company is one of Baltimore's oldest continually operating businesses, and by 1958, had become the largest manufacturer of embroidered emblems in the world. This historic property is being rehabilitated into business and institutional spaces, featuring open floor plans, the large factory windows, skylights, and 12-foot ceilings.



Hoen Lithograph, East Biddle Street Baltimore City (\$3,000,000 in tax credits awarded)

Originally built in 1898 for the Bagby Furniture Company, the site is most closely associated with the Hoen Lithograph Company, which operated on the property from 1902 to 1981. Hoen, established in 1835, was the oldest continuously operating lithographer in the United States when it closed in 1981. The historic complex is being restored and converted to house a lively mixed use development featuring a food production kitchen, a brewery, office space for start-ups and non-profits and market rate apartments targeting healthcare workers.



Footer's Dye Works, Howard Street, Cumberland, Allegany County (\$1,875,000 in tax credits awarded)

Built in 1905, this building is an important remnant of the city's industrial heritage. The Footer's Dye Works functioned as one of the dominant cleaning and dyeing facilities in the Mid-Atlantic region through the first third of the 20th century. This structure will be restored and expanded to house a mix of rental housing units, a restaurant/brewery and commercial office space.



St. Michael's Church Complex, East Lombard Street, Baltimore City (\$3,000,000.00 in tax credits awarded)

Constructed between 1850 and 1927 the St. Michael's Church complex is a remarkably intact example of an historic urban religious campus. The church played a key role in the assimilation of German immigrants arriving in Baltimore and, with its school and parish hall, served as the social center of the parish. The now vacant complex will be restored with a mix of commercial uses occupying the former sanctuary building and parish hall and with other areas of the school and rectory being converted to rental residential apartments.



Academy School, Mill Street, Cambridge, Dorchester County
(\$287,500 in tax credits awarded)

This 1906 school building has been vacant and endangered for many years. The project will restore the exterior of the building and re-purpose the historic classroom, library and office spaces for use as a senior living apartment building.

Small Commercial

In 2014, Maryland expanded the program to include a new \$4 million small commercial tax credit for modest rehabilitation projects. In fiscal year 2016, the Maryland Heritage Structure Rehabilitation Tax Credit Program approved 8 proposed Small

Commercial Tax Credit projects worth \$1,507,513.00 of credits in counties across the state.

Residential

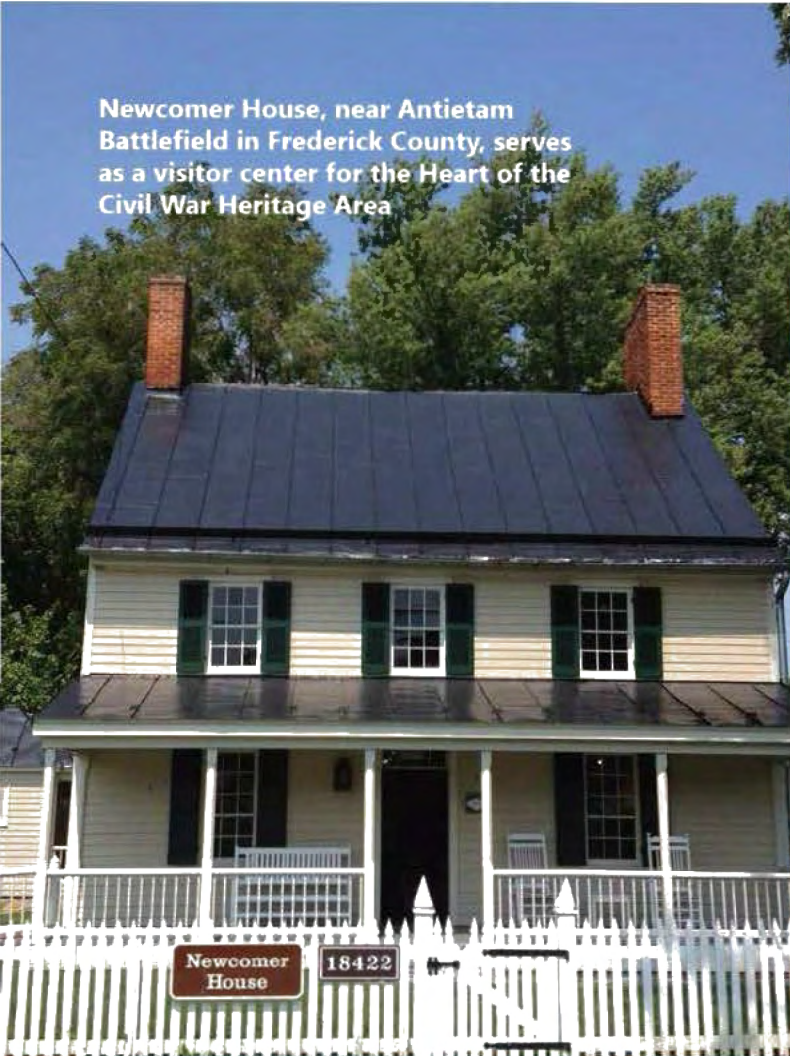
In Maryland, homeowners can earn a state income tax credit equal to 20 percent of qualified rehabilitation expenses for projects costing \$5,000 or more. In fiscal year 2016, the Maryland Heritage Structure Rehabilitation Tax Credit program approved 174 proposed Homeowner Tax Credit projects worth an estimated \$2,114,291.00 in tax credits in counties across the state.

Success Story: Baltimore Rowhouse Rehabilitation 1732-1744 E. Preston Street, Baltimore City

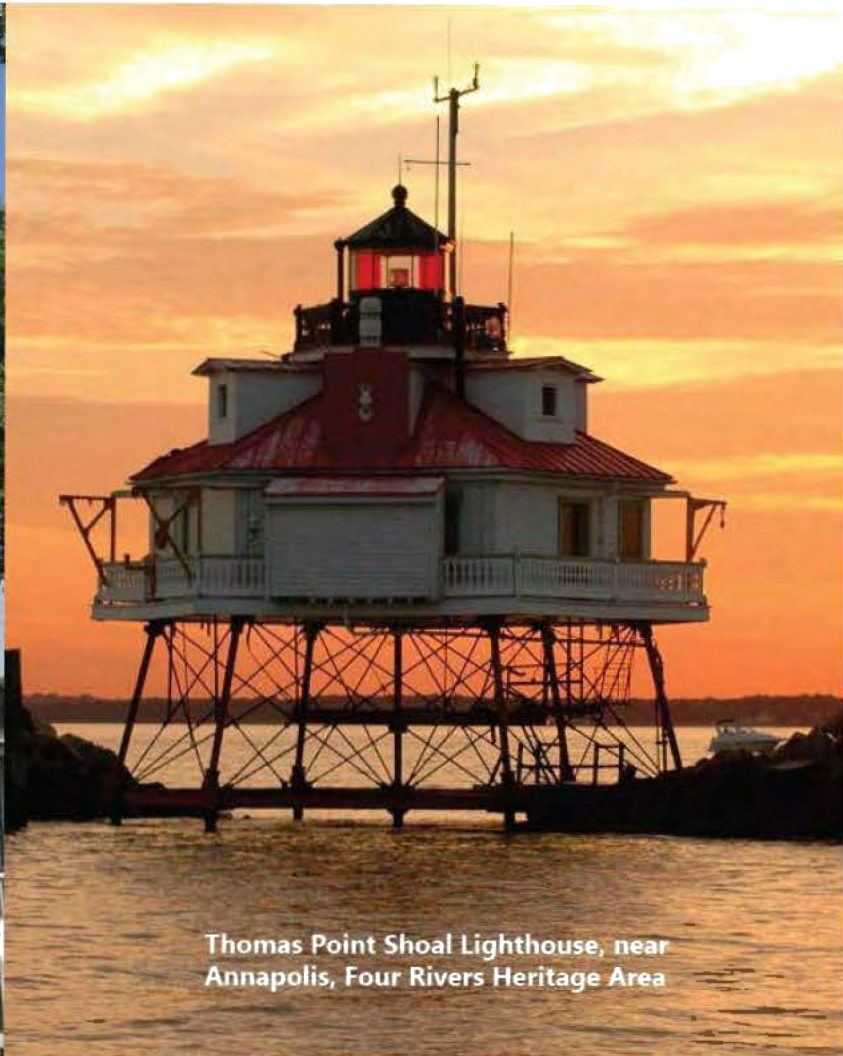


Rowhouse rehabilitation is changing the face of Baltimore City, bringing historic properties back into use as single-family dwellings. Many of these properties begin in a severe state of deterioration with missing windows and collapsed interior framing and roofing systems and rehabbed back into livable homes. In some cases, developers are utilizing Federal tax credits, which are administered by the National Park Service with an initial review facilitated by the Maryland Historical Trust. In other cases, the State homeowner tax credit is used through a developer's option, which qualifies the new homeowner for the credit. Rowhouse rehabilitation projects are most prominently seen along East Preston Street and North Gay Street in the Baltimore East / South Clifton Park Historic District, and East Federal Street in the Old East Baltimore Historic District. The rehabilitation of these properties is bringing life back to these neighborhoods, sparing demolition and helping increase the economy in Baltimore.

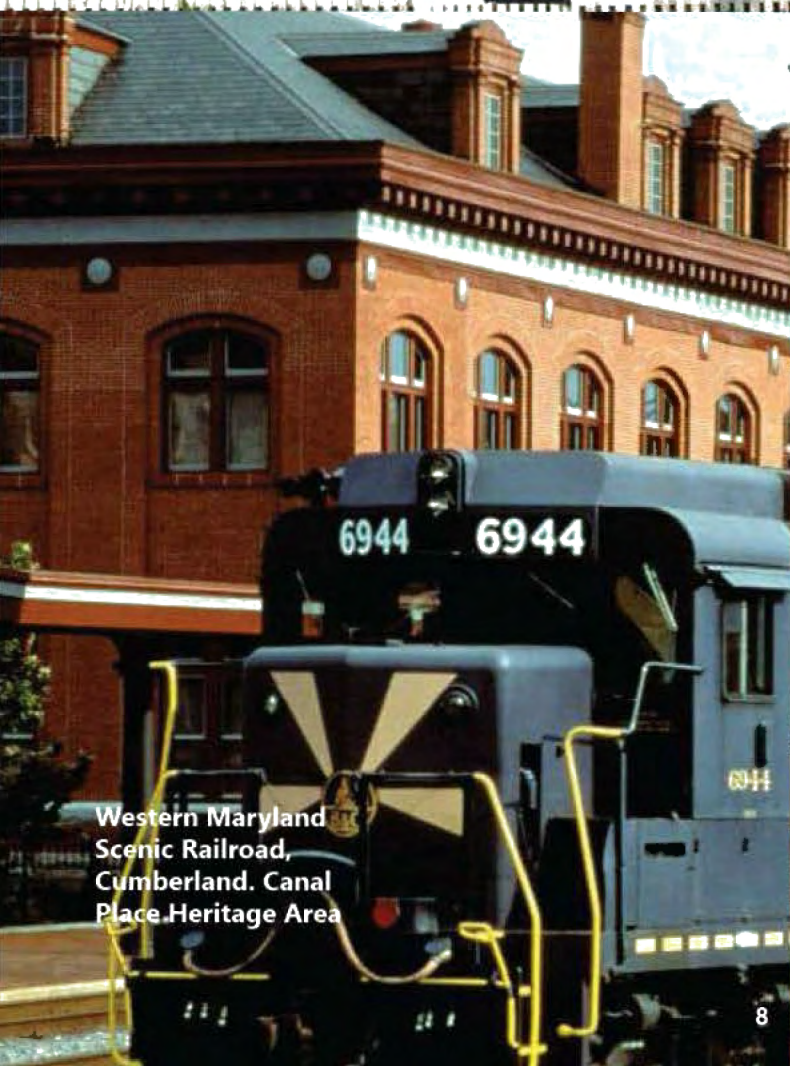
Newcomer House, near Antietam Battlefield in Frederick County, serves as a visitor center for the Heart of the Civil War Heritage Area



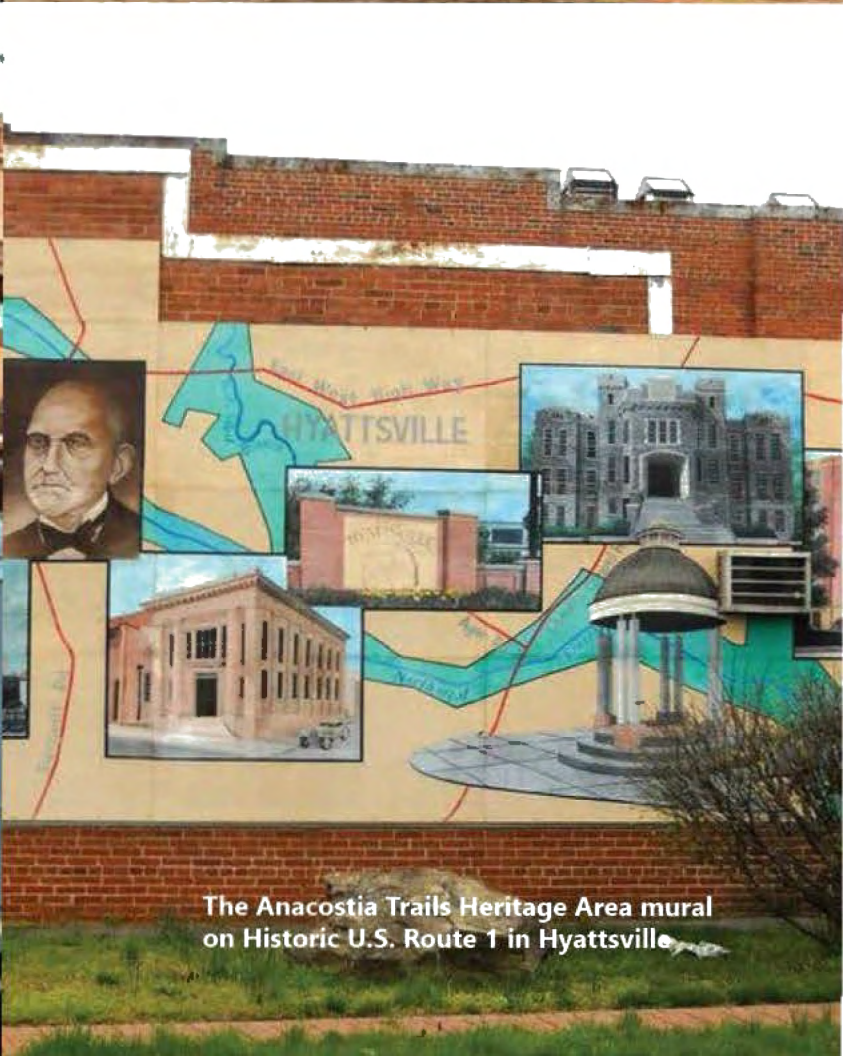
Thomas Point Shoal Lighthouse, near Annapolis, Four Rivers Heritage Area



Western Maryland Scenic Railroad, Cumberland Canal Place Heritage Area



The Anacostia Trails Heritage Area mural on Historic U.S. Route 1 in Hyattsville



Maryland Heritage Areas Program

Governed by the Maryland Heritage Areas Authority and administered by the Maryland Historical Trust, the Maryland Heritage Areas Program provides targeted financial and technical assistance within thirteen locally designated Heritage Areas, each of which represents a unique aspect of Maryland's historic and cultural character. In Heritage Areas, individuals, businesses, non-profits and governments form partnerships to preserve the best of Maryland's historic sites and towns, unspoiled natural landscapes and enduring traditions.

In fiscal year 2016, the Maryland Heritage Structure Rehabilitation Tax Credit Program approved 174 proposed Homeowner tax credit projects worth an estimated \$2,114,291 in tax credits in counties across the state. The Maryland Heritage Areas Authority awarded \$2,894,223 to 60 projects that foster economic development through heritage tourism, leveraging \$17,233,090 in non-State matching support. In addition, the Authority awarded three emergency matching grants: \$30,000 to the Baltimore Heritage Area Association, Inc. in Baltimore City for "Healing and Moving Forward: Baltimore's Neighborhoods return to 'Visitor-Ready,'" \$5,000 to the Caroline County Historical Society, Inc. for stabilization of the Nehemiah Fountain Cobbler Shop, the oldest known commercial structure still surviving in the Town of Denton; and \$66,000 to the County Council of Dorchester County for emergency stabilization of the Hearn Building, located at 509-511 Race Street in Cambridge.

County	Applicant	Project	Awarded
Prince George's	Anacostia Trails Heritage Area, Inc	FY 2016 Management Grant	\$100,000.00
Prince George's	Hyattsville Community Development Corporation	ARTways: Sculptural Signage & Mapping	\$40,000.00
Prince George's	Pyramid Atlantic, Inc.	Hyattsville Arcade Development	\$90,000.00
Anne Arundel	Annapolis, London Town and South County Heritage Area, Inc	FY 2016 Management Grant	\$100,000.00
Anne Arundel	Anne Arundel County	Before the Bay Bridge: Anne Arundel County's 20th C Beach Resorts	\$40,000.00
Anne Arundel	Historic Annapolis, Inc.	Renovation of 1 Martin Street: Construction Phase	\$90,000.00
Anne Arundel	London Town Foundation	Accessibility Planning in the Historic Area	\$5,000.00
Anne Arundel	Maryland Hall for the Creative Arts, Inc.	Metal Stairwell Window Restoration	\$81,737.00
Baltimore City	B & O Railroad Museum, Inc.	Repairing the West Side of the B&O's North Passenger Carshop	\$35,000.00
Baltimore City	Baltimore Heritage Area Association, Inc	FY 2016 Management Grant	\$100,000.00

County	Applicant	Project	Awarded
Baltimore City	Baltimore Heritage Area Association, Inc	Emergency Grant - Healing and Moving Forward: Baltimore's Neighborhoods return to "Visitor-Ready"	\$30,000.00
Baltimore City	Baltimore Office of Promotion and the Arts	Bromo Seltzer Arts Tower Phase 2A Restoration	\$90,000.00
Baltimore City	Carroll Museums Inc	Phoenix Shot Tower Stairs and Lighting Capital Improvement Project	\$90,000.00
Baltimore City	Friends of Patterson Park Inc.	Patterson Park Cannon Bases	\$6,000.00
Baltimore City	Jewish Museum of Maryland, Inc.	Planning a New Core Exhibit at Jewish Museum of Maryland	\$25,000.00
Baltimore City	Maryland Historical Society	Enoch Pratt House Design Plan	\$50,000.00
Baltimore City	Parks & People Foundation	Interpretive and Wayfinding Signs for Auchentoroly Terrace	\$25,000.00
Allegany	Canal Place Preservation & Development Authority	FY 2016 Management Grant	\$100,000.00
Allegany	Mayor and City Council of Cumberland	Canal Place Heritage Area Cultural Programming	\$13,300.00
Allegany	Western Maryland Scenic Maryland Railroad Development Corporation	Return-to-service Rehabilitation of Former C&O Locomotive No. 1309	\$50,000.00
Dorchester	Cambridge Main Street, Inc.	Cambridge Main Street Website Redesign	\$4,000.00
Dorchester	Heart of Chesapeake Country Heritage Area	Water Moves Us Exhibit Installation at Dorchester Visitor Center	\$6,700.00
Dorchester	Heart of Chesapeake Country Heritage Area	FY 2016 Management Grant	\$100,000.00
Dorchester	Nanticoke Historic Preservation Alliance, Inc. (NHPA)	Handsell House Brickwork Preservation	\$15,000.00
Dorchester	County Council of Dorchester County	Emergency Grant - Herbert Hearn Hardware Co. Building	\$66,000.00

County	Applicant	Project	Awarded
Frederick	Catoctin Furnace Historical Society, Inc.	Catoctin Furnace African American Cemetery Commemoration Project	\$14,000.00
Washington	City of Hagerstown	Signage for City Park to Downtown Trail	\$49,500.00
Carroll	Heart of the Civil War Heritage Area	FY 2016 Marketing Grant	\$40,000.00
Carroll	Heart of the Civil War Heritage Area	FY 2016 Management Grant	\$100,000.00
Carroll	Historical Society of Carroll County	Restore House Facades	\$23,116.00
Washington	National Road Heritage Foundation, Inc.	Plan/Write/Design Interpretive Exhibits for a National Road Museum	\$50,000.00
Somerset	Brown Box Theatre Project	Free Shakespeare - The Taming of the Shrew	\$8,000.00
Worcester	Delmarva Discovery Center & Museum, Inc.	River Otter Exhibit	\$90,000.00
Somerset	Lower Eastern Shore Heritage Committee, Inc.	FY 2016 Management Grant	\$82,500.00
Harford	Havre de Grace Decoy Museum, Inc.	Exhibit Display Case Expansion	\$16,265.00
Cecil	Lower Susquehanna Heritage Greenway, Inc.	FY 2016 Management Grant	\$100,000.00
Cecil	Town of Port Deposit	Tome Gas House Project Phase III	\$90,000.00
Harford	Steppingstone Museum Association, Inc.	Historic Land of Promise Farm Restoration and Access	\$30,000.00
Montgomery	Glen Echo Park Partnership for Arts and Culture	Carousel Band Organ Room Renovation Plans	\$15,753.00
Montgomery	Heritage Tourism Alliance of Montgomery County	African American Heritage Interpretive Programs	\$15,000.00

County	Applicant	Project	Awarded
Montgomery	Heritage Tourism Alliance of Montgomery County	Heritage Montgomery Humanities Fair	\$14,000.00
Montgomery	Heritage Tourism Alliance of Montgomery County	FY 2016 Management Grant	\$100,000.00
Garrett	Department of Natural Resources - Forest Service	Meadow Mountain Trail Overlook	\$3,670.00
Garrett	Garrett County Chamber of Commerce, Inc.	Visitor Center Heritage Photo Display Project	\$3,000.00
Garrett	Garrett County Chamber of Commerce, Inc.	FY 2016 Management Grant	\$93,839.00
Frederick	C & O Canal Trust, Inc.	Creating a C&O Canal "Plan Your Visit" Mobile App	\$7,500.00
Baltimore County	Howard County Office Tourism Council, Inc.	Patapsco Heritage Area Geotrail	\$4,000.00
Baltimore County	Patapsco Heritage Greenway, Inc.	Patapsco Valley History Days	\$5,000.00
Baltimore County	Patapsco Heritage Greenway, Inc.	FY 2016 Management Grant	\$100,000.00
Calvert	Calvert Marine Museum Society, Inc.	Recreational Playground: Final Phase of Maritime Gallery Exhibit Renovations	\$25,000.00
Calvert	Calvert Nature Society, Inc.	Rolling Road to Shipping Lane: The Money Crop Trail	\$20,000.00
St. Mary's	DNR - Maryland Park Service	Using Archaeology to Articulate the History of Newtowne Neck	\$15,000.00
St. Mary's	Patuxent River Naval Air Museum Association Inc (PRNAMA)	Exhibits at New Patuxent River Naval Air Museum Building	\$50,000.00
Charles	Tri-County Council for Southern Maryland	Religious Freedom & Potomac Corridor Interpretation-Phase I	\$27,910.00
Calvert	Tri-County Council for Southern Maryland	FY 2016 Management Grant	\$57,000.00

County	Applicant	Project	Awarded
Caroline	Caroline County Historical Society, Inc.	Creation of a Heritage Center - Denton	\$50,000.00
Caroline	Caroline County Historical Society, Inc.	Linchester Mill Visitor Reception Point & Shop	\$20,000.00
Kent	Town of Chestertown	Chestertown Marina Interpretive Center	\$35,000.00
Caroline	Eastern Shore Heritage Area, Inc.	FY 2016 Management Grant	\$40,533.00
Caroline	Eastern Shore Heritage Area, Inc.	FY 2016 Marketing Grant	\$25,000.00
Queen Anne's	Friends of Wye Mill	Roof & Mill Stones replacement - Repairs to Sprinkler System	\$34,000.00
Talbot	Phillips Wharf Environmental Center, Inc.	Oyster House Project (FY 2016)	\$90,000.00
Kent	Sultana Education Foundation, Inc.	Commons Classroom and WetLab at the Sultana Education Center	\$90,000.00



Town of Sharpsburg Added to Heritage Area

In FY 2016, the Heart of the Civil War Heritage Area expanded to include the Town of Sharpsburg (Washington County), making key sites associated with the Battle of Antietam eligible for financial benefits and technical assistance. Sharpsburg's success in preserving its rich history, as exemplified by the Town's pivotal role in the Civil War, provides tangible links to both place and the past that encourage residents to recognize they have a special piece of the American story to treasure and share with others, while both retaining the community's "small town" charm and strengthening its economy.



The Sandy Spring Odd Fellows Lodge in 2015, before the final phase of rehabilitation.

African American Heritage Preservation Program

Created in 2010 and reauthorized as a permanent program in 2015 by the Maryland General Assembly, the African American Heritage Preservation Program (AAHPP) grants are administered as a joint partnership of the Maryland Commission on African American History and Culture (MCAAHC) and the Maryland Historical Trust. The program encourages the identification and preservation of buildings, sites, and communities of historical and cultural importance to the African American experience in Maryland. As part of the reauthorization, the program was able to reduce the time between grant application and grant award beginning with the FY2017 application round. This change will help reduce wait times and uncertainty among grant applicants; it will also help ensure that grant awards are still relevant and projects are ready to commence upon award.

Applications, instructions and grant guidelines for FY2017 funding were made available online and advertised via press release in early February 2016. Maryland Historical Trust and MCAAHC representatives held six workshops in locations across the state for potential applicants; a total of 158 people attended. The Chestertown workshop at Sumner Hall highlighted the substantial restoration of the former Grand Army of the Republic meeting hall, which utilized AAHPP, Maryland Historical Trust Capital Grant and Maryland Heritage Areas Authority funding. The workshop at the Sandy Spring Slave Museum in Montgomery County offered an opportunity for attendees to visit the newly completed Sandy Spring Odd Fellows Lodge, also an AAHPP and Capital Grant recipient. Testimonials at those workshops from past grantees were particularly insightful and meaningful to potential applicants.



Success Story: Restoring Kennard School of Queen Anne's County

Kennard High School represents a historic shift from the old one-room African American schools of Queen Anne's County, which provided only an elementary level of education, to a true secondary school. Built in 1936 with expansions in 1947 and 1951, Kennard was the county's only secondary school for African Americans until its closing in 1966. The school is named for Lucretia Kennard Daniels, a Philadelphia-born graduate of Hampton Institute who came to the Eastern Shore as a teacher in 1903. She went on to become Supervisor of Colored Schools in Caroline County and later in Queen Anne's County. The Kennard Alumni Association has restored the school for use as a community center, including educational programming and tutoring, a rental space for community groups and events, and a classroom museum. The rehabilitation project utilized AAHPP, Maryland Historical Trust Capital Grant Program, and Maryland Heritage Areas Authority grants, along with matching private investment, over the course of a decade.



Architectural Research and Survey

Through architectural research and survey, the Maryland Historical Trust helps identify important historic properties throughout the state and develop a detailed record of their past and present appearance, history, and significance. In FY2016, staff added 302 standing structures and survey districts, as well as 195 updates, to the Maryland Inventory of Historic Properties – totaling over 7,983 acres.

Architectural Research and Survey Grants. In FY2016 staff reviewed and administered six ongoing projects supported through the National Park Service's Hurricane Sandy Disaster Relief Fund. Projects included: a Historic Structures Report for the John Wesley Church and Cemetery in Somerset County; a preservation and treatment plan for the Charles Carroll House and Landscape in Annapolis; a historic sites survey in eight Department of Natural Resources park units, plus a historic context for New Deal-era park resources; an updated survey/National Register nomination for Crisfield, Smith Island and the surrounding region; and archeology and masonry stabilization of the Hessian Barracks in Frederick. Staff continued to review and edit an architectural history publication for Charles County.

Supporting Local Efforts. Staff continued work on revisions to update the *State's Standards & Guidelines* for surveying as well as the Maryland Inventory of Historic Properties form to enhance research capabilities. In addition to outreach to county preservation planners, staff conducted site visits to assist property owners and preservation partners on projects, including: Portland Manor (Anne Arundel County), the Hammond-Harwood and Chase-Lloyd houses (Annapolis), Stagg Hall and Rich Hill (Charles County), the Gorsuch-Joesting House (Harford County), Rock Hall house (Kent County), and Prospect Hill (Montgomery County). Staff provided guidance and expertise on major restoration and reconstruction projects, including the Maryland State House, Melwood Park (Prince George's County), Hessian Barracks (Frederick County), Wesley Church (Somerset County) and the Carroll and Brice houses (Annapolis). Staff continued documentary research and historic fabric analysis to support a historic structures report for the Maryland State House. Staff also participated in advisory panels for *A History of Annapolis in 99 Objects* exhibit and preserving Annapolis' Historic City Dock.

National Register of Historic Places. In FY2016, the National Park Service added eight Maryland individual properties and two historic districts to the National Register of Historic Places. These noteworthy properties include Auchentoroly Terrace Historic District (Baltimore City); Baltimore National Cemetery (Baltimore City and County); Federalsburg West Historic District and Chambers Park Log Cabin (Caroline County); Hopeful Unity (Kent County); Peace Cross (Prince George's County); Wye Hall (Queen Anne's County); DeLaBrooke Tobacco Barn (St. Mary's County); and U. S. Post Office, Salisbury (Wicomico County). As contributing resources within these listings, 1,236 Maryland properties are afforded the benefits and protections of National Register designation.





Terrestrial Archeological Research and Survey

Through archeological research and survey, the Maryland Historical Trust helps identify and document important historic and prehistoric sites throughout the state. In FY2016, staff added 132 archeological sites, as well as 111 updates, to the Maryland Inventory of Historic Properties. One hundred twenty-one archeological survey reports were accessioned into the Library, covering 96,570 acres.

Archeological Research and Survey Grants. Staff administered two ongoing archeological grants funded by the Legislature: the study of the Pig Point site in Anne Arundel County, which is a significant Early-Middle Woodland mortuary complex with related habitation sites; and work related to the Zekiah Fort Heritage Trail in Southern Maryland, which is examining the relationships between the 17th century Piscataway Indian fort and contemporary colonial households and settlements. With funding from the National Park Service under the Hurricane Sandy Disaster Relief Assistance Program, staff administered grants for archeological studies at five sites in Anne Arundel County that suffered damage and are vulnerable to destruction by future storms.

During 2016 staff monitored a National Park Service Hurricane Sandy Disaster Relief grant awarded to the Archeological Society of Maryland. The grant's goal was to determine the degree to which coastal impacts had affected three sites in three counties, and to create a model for private-public partnerships to effectively assess and monitor archeological sites endangered by natural hazards. One of the three sites, the River Farm site in Anne Arundel County, was investigated during the 2016 Archeological Society of Maryland Field Session that involved the efforts of more than 100 volunteers over an eleven-day period. Investigations are anticipated for the coming spring in Calvert and St. Mary's Counties.

Archeological Synthesis Project. The Archeological Synthesis Database is an online tool to provide members of the public with greater access to data obtained through taxpayer funded and publicly mandated archeological research. The project has, to date, produced a searchable database of over 1,200 archeological sites that have been subject to extensive excavation and made that database freely available to the public at <https://mht.maryland.gov/secure/synthesis/>.

Terrestrial Permits. Staff assisted eight State agencies by issuing fourteen terrestrial archeology permits between July 1, 2015 and June 30, 2016 for investigations on lands they administer.



Success Story: Mount Clare Archeological Collection

As part of the City of Baltimore Mayor's Working Group on the Mount Clare Archeological Collection, staff assisted with the recruitment of an intern to design and mount an exhibit of artifacts from the collection. The resulting online exhibit titled *With these Hands: Artifacts of the Enslaved People at Mount Clare* (<http://baltimoreplanning.wixsite.com/mountclareartifacts>) was launched in the spring of 2016.

This significant collection represents decades of archeology at the only extant inner city Colonial plantation site in the United States. Now in the City's care, more than 300 boxes of artifacts and records documenting plantation life in the middle Atlantic are more accessible to researchers than they have ever been.



Maritime Archeological Research and Survey

Created in 1988, the Maryland Maritime Archeology Program searches for, inventories and manages the State's submerged historic properties. These include significant historic shipwreck remains and a diverse range of inundated prehistoric and historic archeological sites and structures. These include not only sunken small boats, ships and the remains of waterfront facilities but also prehistoric camps and villages and historic domestic and industrial sites, which have been submerged by subsidence and sea level rise.

Archeological Research and Survey Activities. In collaboration with the Maryland Historical Trust's terrestrial archeology program, the Maryland Maritime Archeology Program continued survey of areas within and adjacent to Janes Island State Park in Somerset County. Survey is ongoing and involves inventory and assessment of impacts to archeological sites caused by erosion and storm damage. The National Park Service (NPS) provided financial support through a Hurricane Sandy Disaster Relief Grant and in-kind support was provided by the Maryland Department of Natural Resources.

Program staff also completed work on the site of the Ram schooner *Levin J. Marvel* in time for several events commemorating the 60th anniversary of its loss. The loss of this vessel provided the final impetus for the passage of the federal Boating Safety legislation known as the Bonner Act that has since saved thousands of lives.

Archeological Research Permits. An Intensive Survey permit was issued to Dennis Stanford, Curator of Archaeology, Smithsonian National Museum of Natural History, for study of a Paleoindian site in the waters surrounding Parson's Island under the Maryland Submerged Archeological Historic Property Act.

Grants. Staff members provided oversight for three NPS Maritime Heritage Grants and reviewed six other NPS grant applications. Staff also reviewed Ocean Exploration and Research grant applications for the National Oceanic and Atmospheric Administration (NOAA).

Education and Outreach. The Maryland Maritime Archeology Program offered two courses on shipbuilding technology and over 15 lectures and presentations on various topics statewide. The State Underwater Archeologist also provided two lectures via Skype to East Carolina University classes, and lectured on the history and archeology of Mallocks Bay as part of the Rhode Island Sea Grant sponsored event Ship Graveyards & Uncovering Our Maritime Heritage at the University of Rhode Island.

In addition, State Underwater Archaeologist, Susan Langley, presented a paper and Co-chaired the Government Maritime Managers' Meeting at the annual Society for Historical Archaeology Conference where she also was elected for a second time to the Advisory Council for Underwater Archaeology to serve 2016-2020 (she previously served 2007- 2011). She is also participating in the WWI Networking Group, and was invited, by NOAA, to meet with and advise a visiting delegation of maritime archaeologists and museum representatives from Japan.





Mallows Bay Historic District/Mallows Bay-Potomac River National Marine Sanctuary

The National Oceanic and Atmospheric Administration is moving forward on the nomination of the Mallows Bay Historic District as a National Marine Sanctuary. The proposed Sanctuary includes more than 100 wooden World War I-era steamships; the largest homogeneous ship's graveyard in the world, as well as other elements of maritime heritage. The ships are remnants of the civilian U. S. Shipping Board Emergency Fleet Corporation, which was established on April 2, 1917 to carry men, arms and equipment when America entered WWI. Unfortunately, the ships were obsolete by the time they were completed, as diesel engines and metal hulls became dominant. After attempts to re-purpose and break the ships for metal recovery, a private firm abandoned them in Mallows Bay. The construction of the fleet and its proposed purpose were what launched America to world dominance as a shipbuilding power and formalized the American Merchant Marine service, respectively. Salvage of the fleet was a lifeline to many local families during the Great Depression.

As the years wore on, the fleet became part of the maritime landscape, providing roosts and nesting sites for osprey and eagles, a nursery for bass that has made it a prime fishing ground, and shelter for many rare, threatened and endangered species. In October 2015 NOAA solicited public comment and the process for public scoping meetings began. Based on the input from the public, State and federal agencies created a Draft Environmental Impact State, a Draft Management Plan and Draft Regulations, which will be opened again for public comment early in 2017.

Preservation Planning

Local governments play a critical role in identifying, protecting and enhancing historic places and culturally significant sites. The Maryland Historical Trust assists local governments by responding to inquiries about preservation issues throughout the state; through the voluntary Certified Local Government program; and by reviewing and commenting on local comprehensive plans and amendments.

***PreserveMaryland*, the 2014-2018 Statewide Preservation Plan.** Each year, the Maryland Historical Trust monitors the implementation of *PreserveMaryland*, a five-year plan that calls upon public agencies, private organizations and individuals involved in preservation to work toward five statewide goals. Connect with Broader Audiences; Improve the Framework for Preservation; Expand and Update Documentation; Build Capacity and Strengthen Networks; and Collaborate Toward Shared Objectives. To help track progress, the Maryland Historical Trust created web pages that allow for ongoing updates to the plan online.

Certified Local Government Program. The Certified Local Government program, administered by the National Park Service and the Maryland Historical Trust, recognizes counties and municipalities that have made a special commitment to preservation. The Maryland Historical Trust awards 10% of its annual allocation from the Historic Preservation Fund to Certified Local Government projects and educational opportunities each year. The following grants were awarded in 2016:

- Up to \$13,000 to Calvert County to survey and conduct vulnerability assessments on archeological resources threatened by sea-level rise, coastal erosion and flooding along Hunting Creek. Project includes public outreach and education in the affected area, as well as vulnerability scenarios for archeological and MIHP sites using state mapping tools. This planning component may serve as a model for other jurisdictions.
- Up to \$10,000 to Charles County for landscape investigations of Rich Hill, a nationally significant 18th century property associated with John Wilkes Booth's escape, to locate the sites of outbuildings and landscape features.
- Up to \$17,000 to the City of Cumberland to create an individual Maryland Inventory form for the Jane Gates House and update the Maryland Inventory of Historic Properties documentation for multiple districts, potentially including new mid-century resources.
- Up to \$12,000 to the City of Frederick for a Maryland Inventory of Historic Properties survey of East Frederick to determine eligibility for designation as a local historic district and recommend boundaries.
- Up to \$12,500 to the City of Salisbury to update Salisbury's Design Guidelines for the commercial and residential historic districts reviewed by the Historic District Commission.
- Up to \$7,000 to the Maryland Association of Historic District Commissions (MAHDC) to provide educational and training programs for historic preservation commissions and up to \$4,680 for historic preservation commissioners and staff to attend the 2016 National Alliance of Preservation Commissions Forum training in Mobile, AL. MAHDC will receive an administrative fee of \$2,000 to distribute funds, as well as \$1,600 to host a new commission training, *Legal Symposium: Creating, Defending and Enforcing a Strong Historic Preservation Ordinance*.



Sharing Lessons Learned: the City of Annapolis "Weather It Together" Project

In April 2016, the Annapolis "Weather It Together" team, including Nell Ziehl, the Maryland Historical Trust's Chief of the Office of Planning, Education and Outreach, presented a half-day workshop at the Newport Restoration Foundation's international conference, *Keeping History Above Water*. The conference was the first in the country to specifically address cultural heritage and threats from sea-level rise. A follow-up conference will be held in Annapolis in the fall of 2017.



Residents and former residents identify important places in Easton's 'The Bottom' and Hammond Town neighborhoods.

Cultural Resources Hazard Mitigation Planning Program

Supported by a grant through the federal Hurricane Sandy Disaster Relief Fund, the new Cultural Resources Hazard Mitigation Planning Program is aimed at protecting historic places, archeological sites, and cultural landscapes from the effects of natural hazards, such as flooding, wind and coastal erosion. This multi-year program will produce trainings, model guidance and educational materials to assist local governments, based on a planning framework promoted by the Federal Emergency Management Administration.

Technical Assistance and Funding. Throughout 2015 and 2016, staff offered one-on-one technical assistance to aid local governments ready to embark on hazard mitigation planning. The program awarded \$280,000 to projects that identify historic properties and archeological sites at risk to natural hazards and recommend mitigation actions to reduce that risk. Grantees include:

- Anne Arundel County Trust for Preservation Inc., *Phase I Hazard Mitigation Planning for Anne Arundel's Cultural Resources*: \$32,000. The Anne Arundel County Trust for Preservation, Inc. will conduct a study to identify historic structures and archeological sites and evaluate the potential damages caused by flooding in three areas in the county that face the highest risk to flooding and contain the most undocumented and potential historic sites.
- Archeological Society of Maryland, Inc., *Sustainable Models for Sites Endangered by Natural Hazards*: \$32,000. The project will gather information about archeological sites in Anne Arundel County, Calvert County and St. Mary's County that are being destroyed due to eroding shorelines, coastal storms and tidal flooding. The Society will develop case studies to provide guidance for the survey, assessment, and protection of archeological resources threatened by natural hazards and climate change.
- City of Baltimore, *Integrating Historic and Cultural Considerations into Baltimore's All Hazards Plan*: \$30,390. With this grant, the City will identify high-priority historic areas and buildings that are significantly impacted by flooding, evaluate the impacts of flooding, and incorporate the results of evaluation into their Disaster and Preparedness Project and Plan, the City's climate adaptation and hazard mitigation plan. The City will also identify appropriate methods for protecting vulnerable historic structures.
- Heart of Chesapeake Country Heritage Area (Dorchester County), *Hazard Mitigation Planning Project for Dorchester County*: \$44,000. This grant will be used to identify significant cultural resources at risk for flood inundation by regular tidal flooding or storm surge, identify priority properties or resources, complete a risk assessment of relevant properties, and develop a plan for cultural resources.
- Town of Port Deposit, *Cultural Resources Inventory and Risk Assessment for Cecil Towns*: \$40,000. This project encompasses hazard mitigation planning efforts in two Cecil County historic towns. In Port Deposit, an architectural investigation will re-evaluate and update the National Register of Historic Places nomination as the first step in planning to protect the Town's historic buildings from further flood damage. The Town of Elkton will identify historic structures vulnerable to flooding and assess the potential damages that could occur due to flooding from Big Elk Creek, coastal storms, large rain events and snow melt.
- Talbot County, *Documentation and Assessment of Historic Resources in Western Water-Oriented Villages*: \$60,000. This project will identify key historic properties that convey the history and heritage of four understudied, flood-vulnerable villages and conduct an assessment to determine those properties' vulnerability to coastal storms, and estimate the potential damages that could occur.



Staff developed an Architectural Survey Form for Hazard Mitigation Planning as a tool to help local jurisdictions conduct risk assessments for individual historic structures vulnerable to flood hazards and guide decisions on how best to protect those structures from flooding.

Training and Outreach. Staff met with representatives of 19 counties, Baltimore City and 16 municipalities about integrating historic places into hazard mitigation planning activities and produced two online training modules. As part of the Maryland Resiliency Partnership, a collaboration of state agencies and nonprofit organizations working to improve resiliency to natural hazards and climate change, Maryland Historical Trust participated in regional outreach conducted by the Maryland Emergency Management Agency (MEMA) to promote and solicit county and municipal feedback for the State Hazard Mitigation Plan. Additional presentations included the effects of natural hazards on archeological sites and a webinar for the Maryland Association of Floodplain and Stormwater Managers on flooding and historic properties. In support of the development of the City of Annapolis' cultural resources hazard mitigation plan, staff authored white papers on regulatory codes for adaptation and adaptation issues surrounding historic and archeological sites threatened by flood hazards and climate change; staff also led roundtable discussions at a charrette to solicit feedback on adaptation methods from the public.



Success Story: Maryland State Hazard Mitigation Plan

The 2016 update of the State Hazard Mitigation Plan is the first update to address protecting historic properties and archeological sites in the plan. MEMA invited all of the partners in the Maryland Resiliency Partnership to participate in the planning process. In addition to participating in outreach to local governments, Maryland Historical Trust helped prioritize the protection of cultural resources and as a result, the final state plan contains eight mitigation actions that address cultural resources. Including these actions in the plan allows local government to include similar actions in their local hazard mitigation plans and to seek funding for these actions through Federal Emergency Management Agency's Hazard Mitigation Assistance Programs.

Jefferson Patterson Park and Museum

Jefferson Patterson Park and Museum (JPPM) connects people to the past through history and archeology and supports the preservation of Maryland's cultural and natural resources. Located on 560 acres on the Patuxent River in Calvert County, JPPM encompasses more than 65 documented archaeological sites spanning 9,500 years. With events, tours, lectures, school visits, and workshops, JPPM hosts more than 125 programs annually. JPPM is also the home of the Maryland Archaeological Conservation Laboratory, a state-of-the-art facility dedicated to archeological conservation and research.

Events. In FY 2016, more than 75,000 people visited the park. In the fall of 2015, JPPM held its annual 1812 Fair and Re-enactment as well as American Indian Heritage Day. In early June 2016, more than 3,000 people participated in the 31st Annual Children's Day on the Farm. A week later, JPPM celebrated the Patuxent River Wade-In as concerned citizens and elected officials joined Senator Bernie Fowler symbolizing the need for stewardship of the state's water resources.

Educational Programs. JPPM's commitment to serving area schools continued through two on-site programs, one designed for fourth graders and the second aimed at students in the sixth grade. As in years past, staff members worked with students from Huntingtown High School on an archeology-based project. In addition, for a third year, the JPPM education department worked with students from Mill Creek Middle School in Lusby to produce short videos on themes related to Maryland history. In total, more than 3,500 children participated in educational programs through the park in 2016.



Success Story: JPPM Receives Leadership in History Award

The park received a Leadership in History Award from the American Association of State and Local History for its traveling exhibit titled "Artifacts of Outlander" based on a popular book and television series. JPPM was the only winner of this prestigious award from Maryland. This exhibit, which is booked into the end of next year, has already traveled to seven libraries and museums since mid-2015.



Historic Preservation Easement Program

The Historic Preservation Easement Program is the highest form of protection available for any historic, archeological, or cultural resource. It protects the State's financial investments and offers private owners the ability to protect their property by ensuring that it will continue to be cared for and made available to the public in perpetuity. In turn, properties with preservation easements contribute greatly to the State's heritage tourism initiatives and to heritage-related educational programs.

In FY2016, Maryland Historical Trust acquired 10 new easements or modifications. The program now holds 700 easements on over 850 properties, encompassing approximately 8,854 acres statewide. During the year, the Easement Committee reviewed approximately 124 requests from property owners/operators for changes to these easement properties, including full-scale projects and minor alterations. Staff conducted four easement property inspections statewide.

With the assistance of the Maryland Historical Trust Board of Trustees, the program continued to fund an Easement Processor position to address all new and backlogged historic preservation easements, as well as an Easement Inspector position to monitor easements and aid in bringing properties into compliance with their Deed of Easement.

County	Name	Scope	Record Date	Source	Acres
Baltimore City	Center Stage	Modification	07/16/2015	NA	-
Prince George's	Poplar Hill on His Lordship's Kindness	Modification	09/28/2015	NA	-
Baltimore City	United States Appraisers' Stores	Interior and Exterior	10/01/2015	Federal Property Transfer	0.3867
Harford	Gray Gables	Modification	10/30/2015	NA	-
Anne Arundel	Annapolis Market House	Modified Interior, Exterior, Archeology	12/29/2015	Bond Bill 2011	0.176
Caroline	Skipjack F. C. Lewis Jr.	Interior and Exterior	02/11/2016	Capital Grant	0
Baltimore	Mt. Gilboa AME Church	Exterior	02/18/2016	AAHPP FY 2012,2013	0.76
Prince George's	Mount Nebo African Methodist Episcopal Church	Exterior	05/02/2016		0.9932
Kent	Geddes-Piper House	Modification	05/13/2016	NA	-
Wicomico	Double Mills Grist Mill	Interior and Exterior	06/27/2016	MHAA FY 2013	2.68



Montgomery County completed the careful rehabilitation of the Woodlawn Stone Barn (1852) and opened it in the fall of 2015 as the Woodlawn Visitor Center - featuring exhibits on Montgomery County history, the Underground Railroad, the Quaker experience, and free Black communities in Maryland.

Easement Property Success Stories



Completed in 1908 as the last lighthouse constructed on the Chesapeake Bay, **Baltimore Harbor Light** is undergoing a major rehabilitation funded in part through a Hurricane Sandy Disaster Relief Grant from the National Park Service via the Maryland Historical Trust. The lighthouse was purchased from the U.S. Coast Guard by private owners in 2006. The current rehabilitation includes replacement of the roof as well as fabricating and installing new, historically appropriate windows and doors.



Caroline County Tourism & Caroline County Historical Society were awarded Preservation Maryland's 2016 Harrison Volunteer Award for the restoration of the **James H. Webb Log House**, built by a free African American farmer. Once common across the Eastern Shore well into the 19th century, this dwelling type – a one-story log building with a loft and prominent external chimney – is a rare survival. The restoration was funded in part through a grant from the Maryland Heritage Areas Authority.



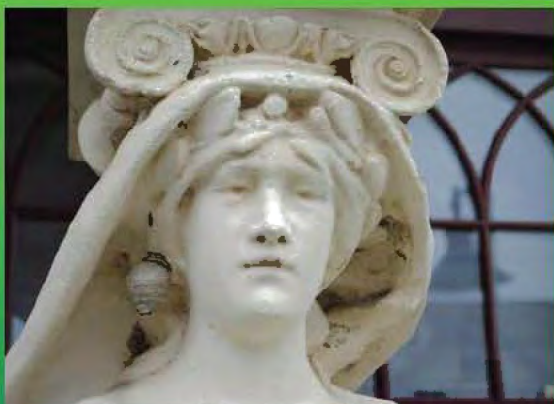
The **Canton Branch of the Enoch Pratt Free Library** in Baltimore City reopened in February 2016 following an extensive rehabilitation. This project, which addressed issues ranging from termite damage to a spatial reorganization, placed the city's oldest continuously operating library branch back into service in time for its 130th birthday.



The c. 1832 stone bank barn at **Woodlawn** in Montgomery County has been rehabilitated and now serves as the visitor center for Woodlawn Manor Cultural Park. The barn houses meeting spaces as well as audiovisual exhibits addressing the Sandy Spring area's Quaker heritage and links to the Underground Railroad.



Uniontown Academy in Carroll County is undergoing its second major restoration under the aegis of its owner, Historic Uniontown, Inc. The academy was created by an act of the Maryland legislature in 1839, and the present brick structure was erected in 1851. The current restoration, funded through generous private donations as well as Maryland Historical Trust Capital Grant Program funding, will correct an ongoing structural problem with the rear wall and restore interior and exterior features.



Two of the most recognizable features of Silver Spring's former **National Park Seminary** campus have been the subject of restoration during the past year. The caryatids (female sculptural figures supporting a colonnade) between the Aloha House and the Chapel received cleaning and a major restoration, spearheaded by Save Our Seminary through an "Adopt-a-Maiden" fundraising campaign that spurred generous private support. The long missing lattice blades of the Dutch Windmill, originally the clubhouse of the Kappa sorority and now a private single-family residence, have also been replicated and installed with support through Maryland Historical Trust's heritage structure rehabilitation tax credit program.



In 2015, FEMA coordinated with Maryland Historical Trust staff on the appropriate rehabilitation of a log cabin located on its historic campus at the National Emergency Training Center in Emmitsburg.

State and Federal Project Review

Historic preservation laws require state and federal government agencies to consider the effects of their projects on historic and archeological resources through a consultation process. By reviewing projects in consultation with agencies, project sponsors, and the public, the Maryland Historical Trust helps ensure that federal and state projects avoid, reduce or mitigate harm to historic and archeological properties.

Project Review. In FY2016, the Maryland Historical Trust reviewed over 5,700 public undertakings pursuant to federal and state historic preservation legislation to assess the effects of those projects on cultural resources. Staff formally evaluated 384 resources identified within project areas for their eligibility in the National Register of Historic Places. Consultation resulted in 22 formal agreement documents to resolve the adverse effects of projects on significant cultural resources and afford pertinent mitigation measures. Staff closely coordinated with program customers (including governmental agencies, local governments, business entities, consultants, interested organizations and the general public) to facilitate the successful completion of the historic preservation review process.

Outreach: Working with Section 106. Staff provided multiple trainings on the Section 106 consultation process to state agencies and grant recipients including: the Department of Natural Resources, the Comptroller's Office/ Department of General Services annual workshop for recipients of state bond bill funds, the Maryland Department of Transportation's Planning Council, and the Maryland Heritage Areas Authority and directors.



Success Story: The Navy Renovates Historic Entry Point

The Maryland Historical Trust coordinated extensively with the Navy on the appropriate treatment of Building 122, a Watch House at the United States Naval Academy found just inside Gate 3 on Maryland Avenue. Building 122 is one of the oldest (1876) buildings still in use on the installation. The building contributes to the National Historic Landmark district and is in one of the most photographed areas of the Academy. The Academy undertook major repairs to the building envelope including replacement of the standing seam copper roof, window and door restoration, brick repointing, interior plaster repair as well as repainting the building. The project showcases how research and an understanding of a building's evolution can inform the project design process for the better.

Military Monuments and Roadside Historical Markers

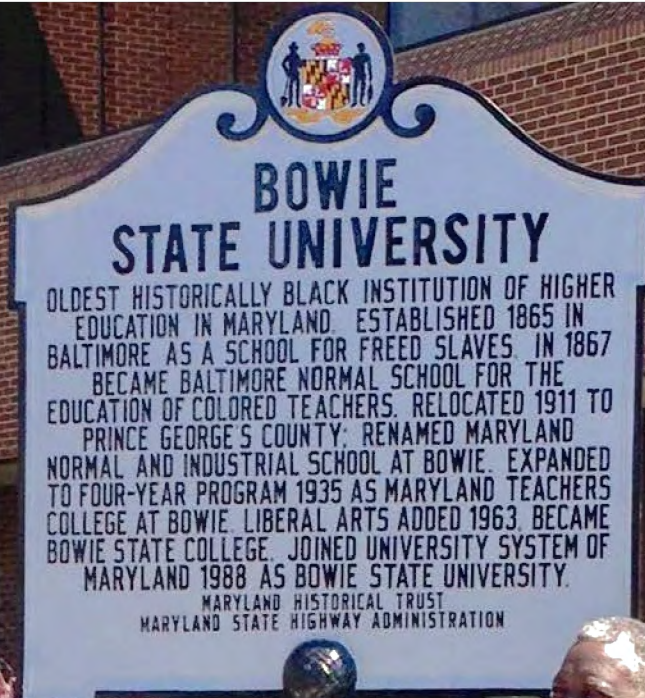
Military Monument Conservation. The Governor's Commission on Maryland Military Monuments was created in 1989 to inventory the approximately 432 military memorials honoring Maryland's veterans, to secure funds for the preservation of those in need, and to develop educational and tourism materials relating to their history. Administered by the Maryland Department of Planning, the Commission consists of up to 17 volunteer members, including one representative of the Maryland Historical Trust, who bring military, historical, business and government expertise to the important work of safeguarding our state's military monuments. In FY2016, Maryland Historical Trust staff coordinated consolidation and biocide cleaning for three marble figural monuments and a condition assessment for the World War I Memorial at the entrance to the Fifth Regiment Armory in Baltimore.

Historical Markers Program. Launched in 1933, the roadside historical marker program draws attention to the many events, people and places that have contributed to the richness of our state and nation. The marker program is administered by the Maryland Historical Trust in cooperation with the Maryland State Highway Administration.

In FY2016 markers were installed to commemorate:

- **Montebello**, at the gate house off Hillen Road at Lake Montebello, Baltimore City;
- **Mason and Dixon Line**, York Road (MD 45) at the Maryland/Pennsylvania line in Maryland Line, Baltimore County;
- **Sparrows Point**, Eastbound MD 158, west of MD 151, in Dundalk, Baltimore County;
- **Bowie State University**, Henry Circle, Bowie State University campus, Bowie, Prince George's County;
- **J. Millard Tawes**, on Maryland Avenue (MD 413) south of W. Chesapeake Avenue, Crisfield, Somerset County;
- **Henryton School of Practical Nursing**, Henryton Road at Henryton Center Road, Marriottsville, Carroll County.

Unveiling the new marker at Bowie State University on Founders Day, April 13, 2016, are (left to right) Cassandra Robinson, Bowie State Founders Day Steering Committee; Barbara Spencer Dunn, Maryland Commission on African American History & Culture; Mickey L. Burnim, President, Bowie State University.





SPARROWS POINT

DEVELOPED BY THE PENNSYLVANIA STEEL COMPANY IN 1887-91. THE SPARROWS POINT STEEL PLANT AND SHIPYARD WERE PURCHASED BY BETHLEHEM STEEL IN 1916, AND GREW TO BECOME THE LARGEST IN THE WORLD. VITAL SUPPLIER OF STEEL AND SHIPS DURING BOTH WORLD WARS. PRODUCED STEEL USED IN THE GOLDEN GATE BRIDGE AND THE EMPIRE STATE BUILDING. BY 1960 THE PLANT STRETCHED FOUR MILES LONG AND EMPLOYED MORE THAN 30,000 WORKERS. MANY OF WHOSE FAMILIES LIVED IN THE COMPANY TOWN. THE PLANT CLOSED IN 2012.

MARYLAND HISTORICAL TRUST
MARYLAND STATE HIGHWAY ADMINISTRATION



The new marker for Sparrows Point was unveiled on April 13, 2016, by (left to right) Will Feuer, Bill Barry, Len Shindel, Rose Benton, Tom Capecci, and Troy Pritt.

Maryland Archaeological Conservation Laboratory

The Maryland Archaeological Conservation Lab at Jefferson Patterson Park and Museum houses the state's archeological collection, which includes over eight million objects collected over the past 100 years.

Research and Conservation. In FY2016, lab staff conserved artifacts from clients throughout the United States, including two cast iron stoves and an ore cart for the Catoctin Furnace Historical Society, the landing gear from a 1950s Navy Sky Raider test plane, seven Civil War era rifles from a winery in Northern Virginia, foundation timbers from a c. 1750 ware house in Alexandria, Virginia, and a buoy bell from Florida.

Public Programs. Lab staff provided tours to 531 people and conducted outreach and activities in local schools. Staff neared completion on a searchable database of the lab's collections through a grant funded by Maryland State Highway Administration. As part of the Jefferson Patterson Park and Museum's Public Archeology Program, 165 participants spent 602 hours digging at the Smith's St. Leonard site or processing artifacts in the lab. In the spring of 2016, the lab held two two-day workshops focused on artifact identification and field conservation strategies, which were open to any practicing professionals and graduate students in the field of archeology. Both workshops reached their full enrollment of twenty participants.



Daniel G. Roberts Award in Public Historical Archaeology

The MAC Lab was awarded the 2016 Daniel G. Roberts award for the lab's contributions to public historical archeology. Sponsored by the Society for Historical Archaeology, it was awarded at the annual conference in Washington DC.

The park also received a Leadership in History Award from the American Association of State and Local History for its traveling exhibit "Artifacts of Outlander," based on a popular book and television series. This exhibit has traveled to seven libraries and museums since mid-2015 and is booked into the end of next year. An online exhibit is planned for FY2017.



Public Archeology Programs

Each year, the Maryland Historical Trust provides opportunities for archeology enthusiasts and the general public to learn more about archeology in the state. For information about the public programs of the Maryland Archaeological Conservation Laboratory, please see page 36.

Field Session. The annual Field Session in Maryland Archeology, led and coordinated by the Maryland Historical Trust, combines public outreach, education, and research through the investigation of a significant archeological site. In partnership with Anne Arundel County's Lost Towns Project and the Archeological Society of Maryland, the 2016 Field Session focused on a site on the shore of the Patuxent River that held evidence of Native American occupation spanning several thousand years and is threatened by severe erosion and inundation. Over the 11-days of the Field Session more than 100 volunteers were involved.

Participating archeologists identified four discrete areas of occupation over the six acres investigated during the Field Session. Dating to the Late Archaic (3750 BC – 1250 BC), the Early Woodland (1250 BC – AD 50), the Middle Woodland (AD 50 – AD 950) and the Late Woodland (AD 950 – AD 1600), these four areas indicated that while the general landform remained attractive over more than 4,000 years, subtle differences in subsistence requirements or environmental change resulted in shifting settlement through time. One of the most interesting discoveries was evidence of an oval structure, dating to the Early Woodland, that was constructed of wooden posts set in a shallow and narrow trench. Such "wall trench" structures are primarily known from the Ohio River valley, and are associated with Adena culture ceremonialism there. The near-by Pig Point site also dates to the Early Woodland and shows ceremonial connections to the Ohio River valley Adena culture, causing researchers to question whether this part of the Patuxent River participated in some way in this distant ancient ceremonial tradition.



Workshop in Archeology. The day-long Workshop in Archeology features a keynote address, topical lectures, and hands-on activities related to the prehistoric, historic, and maritime archeology of the state. The 25th annual Workshop was held on March 26, 2016 and featured eight unique presentations by professional archeologists on topics ranging from the search for the site of King Opeassa's Town to a consideration of the costumes and props of the popular television series *Outlander*. The keynote presentation by Henry Miller of Historic St Mary's City provided an overview of 50 years of archeological exploration at Maryland's first capital.



Success Story: Hurricane Sandy Disaster Relief Fund Grants

Two separate grants with the shared aim of documenting coastal threats to archeological resources were awarded to partner organizations under the Maryland Historical Trust's Cultural Resources Hazard Mitigation Grant Program funded by the National Park Service's Hurricane Sandy Disaster Relief Fund program. One of the grants was awarded to the Lost Towns Project for documentation and assessment of cultural resources in Anne Arundel County threatened by coastal flooding, and the other was awarded to the Archeological Society of Maryland to develop and test models for public-private partnerships to assess and monitor archeological sites endangered by natural hazards. These two grants resulted in the investigation of seven coastal archeological sites in three southern Maryland counties.



HISTORIC ST. MARY'S CITY

FIFTY YEARS OF DISCOVERING AND SHARING OUR PAST

St. John's

1660s Brick Chapel

In 1966, the State of Maryland created Historic St. Mary's City to preserve and commemorate the founding site of the province of Maryland and its first capital. For fifty years, the museum's mission has been to investigate this unique treasure through archeology and historical research, and to share its many stories with the citizens of Maryland and beyond. One of the longest running state programs in archeology, HSMC uncovers acres of the old city, "one inch at a time."

Learn more about the museum at:
www.hsmcdigshistory.org/

Print House

Garrett Van Sweringen's Inn

Maryland Archeology Month

April 2016



To learn more about St. Mary's City and archeology in Maryland, visit:

www.marylandarcheology.org

Maryland Archeology Month is sponsored by the Maryland Historical Trust; the Archeological Society of Maryland; the Council for Maryland Archeology; the Maryland State Highway Administration; Historic St. Mary's City; the Maryland-National Capital Park and Planning Commission-Prince George's County Archeology Program; Cultural Heritage Research Services, Inc. (CHRS, Inc.); Cultural Resource Analysts, Inc.; Dovetail Culture; Resource Group; Marstel-Day, LLC; Navarro and Wright Consulting Engineers, Inc.; R. Christopher Goodwin & Associates, Inc.; Rummel, Klepper & Kahl, LLP; The Ottery Group, Inc.; and TRC Environmental Corporation.

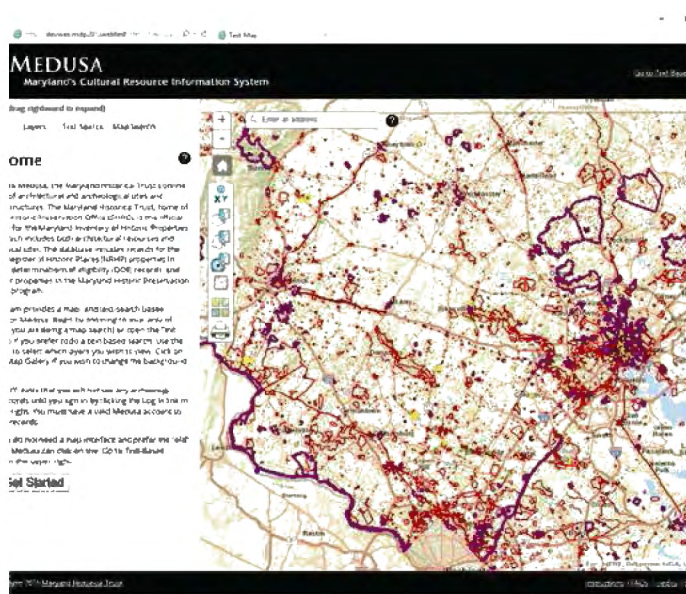
Valley & Coast

Cultural Resource Information Program

Several hundred cultural resource professionals, such as architectural historians and archeologists, visit the Maryland Historical Trust's library in Crownsville each year to research historic and cultural properties. While maintaining a physical library is vital, Maryland Historical Trust continues to improve and enhance online public access to this data.

Maryland Historical Trust Library. In FY2016, the Maryland Historical Trust Library provided service to patrons seeking information about the State's architectural, archeological, and cultural resources. Most data is available in both paper form and via Medusa, an electronic database that includes architectural documentation (available to everyone) and archeological documentation (available only to qualified researchers with an approved account and password). Currently, customers travel to the Library to view site location maps; however, in the first quarter of 2017, access to these maps will be available off-site. The Library holds nearly 10,000 items, including books, journals, vertical files, documentation for architectural and archeological sites, architectural drawings, site-specific reports (many of which have been digitized), oral history interviews on tape and in written form, USGS quads showing locations of architectural and archeological sites, and copies of historic maps. Throughout the year feedback remained highly positive regarding customer service, availability of needed information, ease of scheduling appointments, and knowledge of staff when responding to reference requests.

Online Cultural Resource Information System. In FY2016, Maryland Historical Trust continued to expand the online version of Medusa, the State's cultural resource information system, which was launched in 2015. Work is near completion on a map-based interface that will allow researchers and the general public to access architectural and archeological information geographically via interactive maps, further enhancing the value of the statewide data. Medusa provides access to over 47,000 Adobe Acrobat (pdf) files of inventoried historic and cultural properties, including 42,881 architectural resources and 13,746 archeological resources.



Maryland Historical Trust also launched a more public-friendly online application to conduct basic searches of the Maryland Inventory of Historic Properties, to go along with existing public-friendly online applications for the state's National Register properties, historical markers, and Archeological Synthesis Project. These are available on the Maryland Historical Trust web site. Two generous grants from Maryland State Highway Administration have helped bring Maryland Historical Trust's resources online and will continue to help create more and better search capabilities. Extensive work has taken place to document and link architectural resources within Maryland's many historic districts, and work will soon begin to extract data from existing records to permit searching of architectural resources by construction date, style, and historic function. We hope this will open more opportunities for research and study of Maryland's rich history.

To use Medusa and the online applications, go the Maryland Historical Trust website at mht.maryland.gov and go to the "Research and Survey" tab on the menu.

Maryland Preservation Awards

On March 16, 2016, in Annapolis, the Maryland Historical Trust celebrated the state's best efforts in historic preservation during the 41st Maryland Preservation Awards. The Maryland Historical Trust Board of Trustees recognized outstanding education, restoration and revitalization projects, as well as organizational leadership.

The following people and programs were recognized with 2016 awards.



Heart of the Civil War Heritage Area Website (Carroll, Washington and Frederick Counties). The Heart of the Civil War Heritage Area's recently redesigned website encourages visitors and residents to engage with historic places and learn more about Maryland's unique Civil War heritage. (Excellence in Media and Publications)



2015 Weather It Together Program (Annapolis). The City of Annapolis's multi-agency effort engages businesses, residents, public officials and other stakeholders to help plan for sea level rise and tidal flooding on historic properties in the downtown Historic District. (Excellence in Community Engagement)



Washington Monument Restoration (Baltimore City). The \$6.8 million restoration of the Washington Monument was supported by exceptional educational programming via social media and a series of short videos. (Excellence in Programming and Exhibits)



Michael Travis and Renee Bernier for The Exchange (Charles County). The owners have meticulously restored the exterior of this 18th century home while retaining intact original materials and significant historic alterations. (Outstanding Stewardship of an Easement Property)



US Naval Academy Administration Building/Larson Hall (Annapolis). The c. 1907 Administration Building, designed by architect Ernest Flagg as a part of the National Historic Landmark campus, was recently restored and modernized. (Outstanding Stewardship by a Government Agency)



The Tire Shop (Baltimore City). A former light industrial building in Remington, the Tire Shop is now a mixed-use development that includes Single Carrot Theatre and Parts and Labor, a restaurant and butcher shop. (Project Excellence: Community Impact)



Falling Green (Montgomery County). Originally built in 1764, Falling Green was rehabilitated by the Olney Boys and Girls Community Sports Association and adapted for office and meeting space while respecting the character and integrity of the historic home. (Excellence in Institutional Rehabilitation)



Centre Theatre (Baltimore City). Vacant for 25 years, the historic Centre Theatre is now the Station North Arts & Entertainment District's most spectacular building and a hub for artists, arts education, and young entrepreneurs who are shaping the next Baltimore. (Excellence in Commercial Rehabilitation)



Chesapeake Culinary Center (Caroline County). The former Caroline High School now serves as the Culinary Center's hospitality training headquarters, as well as a small bottling facility and a community incubator kitchen, which provides food entrepreneurs with the resources necessary for success and growth. (Project Excellence: Partnerships)



Eastern Shore Land Conservancy. In addition to protecting land with archeological sites and cultural landscapes, this conservation organization has expanded its programs to include planning in historic towns and recently rehabilitated a historic industrial building as its headquarters. (Outstanding Organizational Leadership)



Friends of Patterson Park (Baltimore City). Projects such as the historic Pagoda Observatory and restoration of the Hampstead Hill cannons, as well as educational programming, have been part of the Friends' long legacy of preservation in a rapidly changing neighborhood. (Outstanding Organizational Leadership)



Washington Monument, Baltimore City.



CHANGING
Maryland
for the Better

State of Maryland

Larry Hogan, Governor

Boyd Rutherford, Lt. Governor

MARYLAND DEPARTMENT OF



PLANNING

Maryland Department of Planning

Wendi W. Peters, Secretary

Ewing McDowell, Deputy Secretary

MARYLAND
HISTORICAL



TRUST