

AA-12

Wiley H. Bates High School, (Annapolis Colored High School)

Architectural Survey File

This is the architectural survey file for this MIHP record. The survey file is organized reverse-chronological (that is, with the latest material on top). It contains all MIHP inventory forms, National Register nomination forms, determinations of eligibility (DOE) forms, and accompanying documentation such as photographs and maps.

Users should be aware that additional undigitized material about this property may be found in on-site architectural reports, copies of HABS/HAER or other documentation, drawings, and the “vertical files” at the MHT Library in Crownsville. The vertical files may include newspaper clippings, field notes, draft versions of forms and architectural reports, photographs, maps, and drawings. Researchers who need a thorough understanding of this property should plan to visit the MHT Library as part of their research project; look at the MHT web site (mht.maryland.gov) for details about how to make an appointment.

All material is property of the Maryland Historical Trust.

Last Updated: 06-11-2004

United States Department of the Interior
National Park ServiceNational Register of Historic Places
Registration Form

This form is for use in nominating or requesting determinations of eligibility for individual properties or districts. See instructions in *Guidelines for Completing National Register Forms* (National Register Bulletin 16). Complete each item by marking "x" in the appropriate box or by entering the requested information. If an item does not apply to the property being documented, enter "N/A" for "not applicable." For functions, styles, materials, and areas of significance, enter only the categories and subcategories listed in the instructions. For additional space use continuation sheets (Form 10-900a). Type all entries.

1. Name of Property

historic name Annapolis Colored High School
other names/site number BATES, WILEY H., HIGH SCHOOL (preferred) AA-12

2. Location

street & number 1029 Smithville Street N/A ☐ not for publication
city, town Annapolis N/A ☐ vicinity
state Maryland code MD county Anne Arundel code 003 zip code 21401

3. Classification

Ownership of Property	Category of Property	Number of Resources within Property	
<input type="checkbox"/> private	<input checked="" type="checkbox"/> building(s)	Contributing	Noncontributing
<input checked="" type="checkbox"/> public-local	<input type="checkbox"/> district	<u>1</u>	<u>0</u> buildings
<input type="checkbox"/> public-State	<input type="checkbox"/> site	<u> </u>	<u> </u> sites
<input type="checkbox"/> public-Federal	<input type="checkbox"/> structure	<u> </u>	<u> </u> structures
	<input type="checkbox"/> object	<u>1</u>	<u>0</u> objects
			<u>0</u> Total

Name of related multiple property listing: N/A
Number of contributing resources previously listed in the National Register 0

4. State/Federal Agency Certification

As the designated authority under the National Historic Preservation Act of 1966, as amended, I hereby certify that this ☒ nomination ☐ request for determination of eligibility meets the documentation standards for registering properties in the National Register of Historic Places and meets the procedural and professional requirements set forth in 36 CFR Part 60. In my opinion, the property ☒ meets ☐ does not meet the National Register criteria. ☐ See continuation sheet.

Signature of certifying official [Signature] STATE HISTORIC PRESERVATION OFFICER Date 8/17/92

State or Federal agency and bureau _____

In my opinion, the property ☐ meets ☐ does not meet the National Register criteria. ☐ See continuation sheet.

Signature of commenting or other official _____ Date _____

State or Federal agency and bureau _____

5. National Park Service Certification

I, hereby, certify that this property is:

☐ entered in the National Register.
☐ See continuation sheet.

☐ determined eligible for the National Register. ☐ See continuation sheet.

☐ determined not eligible for the National Register.

☐ removed from the National Register.

☐ other, (explain:) _____

Signature of the Keeper

Date of Action

6. Function or Use

AA-12

Historic Functions (enter categories from instructions)

EDUCATION/school

Current Functions (enter categories from instructions)

VACANT/not in use

7. Description

Architectural Classification

(enter categories from instructions)

COLONIAL REVIVAL

Materials (enter categories from instructions)

foundation CONCRETE

walls ASPHALT

BRICK

roof

other WOOD

Describe present and historic physical appearance.

DESCRIPTION SUMMARY:

The Wiley H. Bates High School Complex, on Smithville Street in Annapolis, was begun in the early 1930s. The first portion was completed in 1932, and replaced the original Annapolis Colored High School which had been located in the Stanton School on West Washington Street in Annapolis. The original portion of the building is a flat roofed, two story building of brick and masonry bearing walls and wood frame floor and roof structure. A center, double loaded corridor runs north/south the length of the building with classrooms, lavatories, and stairs on the western side, and classrooms, library, offices and a two story auditorium on the eastern side of the corridor. The second floor corridor opened to the two story auditorium space as a gallery. First floor classrooms were added to both the north and south in 1937, and second floor classrooms were added in 1945. The major architectural treatment is reserved for the auditorium section which is embellished with three segmentally arched windows, a low cast stone belt course, and a pattern of pilasters and panels; the remainder of the building facade is relieved with cast stone belt courses and ganged double hung windows. The resource achieved its current configuration in 1950, when additional teaching facilities were added. The most recent portion of the building is also of masonry construction, and is completed in a simplified International or Modern style. The entire building complex continued in use until 1981.

United States Department of the Interior
National Park Service

AA-12

National Register of Historic Places Continuation Sheet

Section number 8 Page 9

Wiley H. Bates High School
Anne Arundel County
Maryland

SIGNIFICANCE SUMMARY REVISED

The Wiley H. Bates High School is of exceptional significance in the history of the development of public education for African-Americans in Anne Arundel County. From the time the school was built in 1932 until 1966 when the Anne Arundel County public school system was finally desegregated, the Wiley H. Bates High School was the only public school in the county which African-American students could attend for a secondary level education. The 1932 building was expanded in 1937, 1945, and 1950 to accommodate increasing enrollment. In each building campaign, facilities which equaled or exceeded those available to white students were provided. These expansions and remodelings to Wiley H. Bates High School represent the response of Anne Arundel County to the "separate but equal" doctrine which was applied to public facilities in the first half of the twentieth century.



State Historic Preservation Officer

6/14/94

Date

United States Department of the Interior
National Park Service

**National Register of Historic Places
Continuation Sheet**

Bates, Wiley H., High School AA-12
Anne Arundel County
Maryland

Section number 8 Page 5

HISTORIC CONTEXT:

MARYLAND COMPREHENSIVE HISTORIC PRESERVATION PLAN DATA

Geographic Organization: Western Shore

Chronological/Developmental Period(s):

Modern Period A.D. 1930-present

Prehistoric/Historic Period Theme(s):

Social/Education/Cultural

Resource Type:

Category: Building

Historic Environment: Urban

Historic Function(s) and Use(s):

EDUCATION/school

Known Design Source:

Architect: Buckler & Fenhagen
With William H. Emory, Jr.

See Continuation Sheet No. 6

United States Department of the Interior
National Park ServiceNational Register of Historic Places
Continuation SheetBates, Wiley H., High School AA-12
Anne Arundel County
MarylandSection number 8 Page 6HISTORIC CONTEXT:

The Wiley H. Bates High School, built on Smithfield Street in 1932, is the second building erected by the Anne Arundel County Board of Education to provide secondary education for African-American students. It is the direct descendant of the Stanton High School located on West Washington Street in Annapolis. Stanton school was a three-year high school established in 1917, and was the first black secondary school in the county. Enrollment came primarily from the surrounding areas, but space was required to accommodate increasing enrollment. Interested residents, including the Stanton Parent-Teacher Association, and Wiley H. Bates (a prominent member of the African American community), persuaded the Anne Arundel County Board of Education of the need for a separate high school for colored students, and a site search began. At this time it was not uncommon for colored parents to donate land for the schools, and with a \$500.00 donation from Mr. Bates, property was secured on Smithville Street. The school was constructed, and classes started in the fall of 1932.

The first principal of the school, Frank Butler, recalls that while it was officially identified as the Annapolis Colored High School, it was known as Wiley H. Bates High School since it first opened.

The original building was designed by the Baltimore architectural firm of Buckler & Fenhagen, and subsequent additions were completed by this firm and its successors. In 1928, Riggins Buckler and George Corner Fenhagen established a reputation as school architects with their design for the \$2.5 million Baltimore City College, which prevailed over 18 other entries in a statewide competition. The selection of this celebrated architectural firm to design the new black secondary school reflects Anne Arundel County's approach to providing "separate but equal" facilities, evidencing a commitment to quality, at least in terms of physical plant, despite segregation.

The building was too small from the day it opened. Due to an ever-increasing enrollment, limitations and requirements for admission were instituted, but growth in enrollment was still outpacing the facility. The building was first expanded in 1937, adding more classrooms, and the old Germantown Elementary School, a frame building located at the corner of West and Russell streets,

See Continuation Sheet No. 7

United States Department of the Interior
National Park ServiceNational Register of Historic Places
Continuation SheetBates, Wiley H., High School AA-12
Anne Arundel County
MarylandSection number 8 Page 7

was moved to the site and used as a home economics room and lunch room. This annex no longer stands. In 1945, even more classrooms were added. The school offered courses in academic, general, and vocational arts curricula. French, sheet metal, and physical education classes were added by 1942.

This school building was expanded three times and continued to be the only secondary school for black children in the county. The final expansion, completed in 1950, enlarged the school to three times its original size, and added up-to-date facilities rivaling many white high schools. These facilities included 45 classrooms, a shop, a gymnasium-auditorium, a cafeteria, and a 399-seat "little theater"--at the time the only such facility in the county school system.

The provision of facilities which equaled or exceeded those available to white students, such as the unique auditorium, exemplifies a widely-observed response of school administrators to the U.S. Supreme Court's 1896 decision in *Plessy v. Ferguson*, which established the "separate but equal" doctrine. It appears to have been common practice for school boards to attempt to comply with this mandate through improvements in the physical plant. As early as the 1920s, for example, the Baltimore School Commissioners provided buildings for black pupils which were comparable to those for whites in their appearance, facilities, and cost; the amounts expended on the construction of black schools in the course of a broad campaign of modernization of Baltimore city schools during that period were proportional to the ratio of black to white students. In Anne Arundel County, the selection of the most celebrated school architects of the period to design the 1932 building, and the program of expansion and updating which was carried out through the following decades, reflects Anne Arundel County's efforts to comply with the spirit of the law.

The Anne Arundel County school system was eventually desegregated in 1966. The first fully integrated high school class graduated in 1968. The Bates school continued in use as a junior high school and middle school until it was closed in 1981. The period of significance, 1932-1966, recognizes the span of time between the construction of the original section and the desegregation of the county school system.

9. Major Bibliographical References

AA-12

Brown, Philip L. "Separate But Equal:" A Century of Education in Anne Arundel County.
New York: Vantage Press, 1988.

Maryland Inventory of Historic Properties, Anne Arundel County. Maryland Historical
Trust, Crownsville, Maryland.

☐ See continuation sheet**Previous documentation on file (NPS):**

- ☐ preliminary determination of individual listing (36 CFR 67)
has been requested
- ☐ previously listed in the National Register
- ☐ previously determined eligible by the National Register
- ☐ designated a National Historic Landmark
- ☐ recorded by Historic American Buildings
Survey # _____
- ☐ recorded by Historic American Engineering
Record # _____

Primary location of additional data:

- ☐ State historic preservation office
- ☐ Other State agency
- ☐ Federal agency
- ☐ Local government
- ☐ University
- ☐ Other

Specify repository: _____

10. Geographical Data

Area of property Approximately 1.64 acres
USGS quad: South River, Maryland

UTM References

A

1	8
---	---

3	6	9	0	1	0
---	---	---	---	---	---

4	3	1	4	8	3	0
---	---	---	---	---	---	---

Zone Easting Northing

C

--	--

--	--	--	--	--	--

--	--	--	--	--	--	--	--

B

--	--

--	--	--	--	--	--

--	--	--	--	--	--	--	--

Zone Easting Northing

D

--	--

--	--	--	--	--	--

--	--	--	--	--	--	--	--

☐ See continuation sheet**Verbal Boundary Description**

See Continuation Sheet No. 8

☒ See continuation sheet No. 8**Boundary Justification**

The nominated property consists only of the northern portion of the property upon which
the building and its additions stand.

☐ See continuation sheet**11. Form Prepared By**

name/title Michael Justin Dowling, AIA, and Peter E. Kurtze

organization Annapolis Preservation Trust date April 30, 1992

street & number P.O. Box 2009 telephone (410) 269-0621

city or town Annapolis state Maryland zip code 21401

United States Department of the Interior
National Park Service

**National Register of Historic Places
Continuation Sheet**

Bates, Wiley H., High School
Anne Arundel County
Maryland

AA-12

Section number 7 Page 3

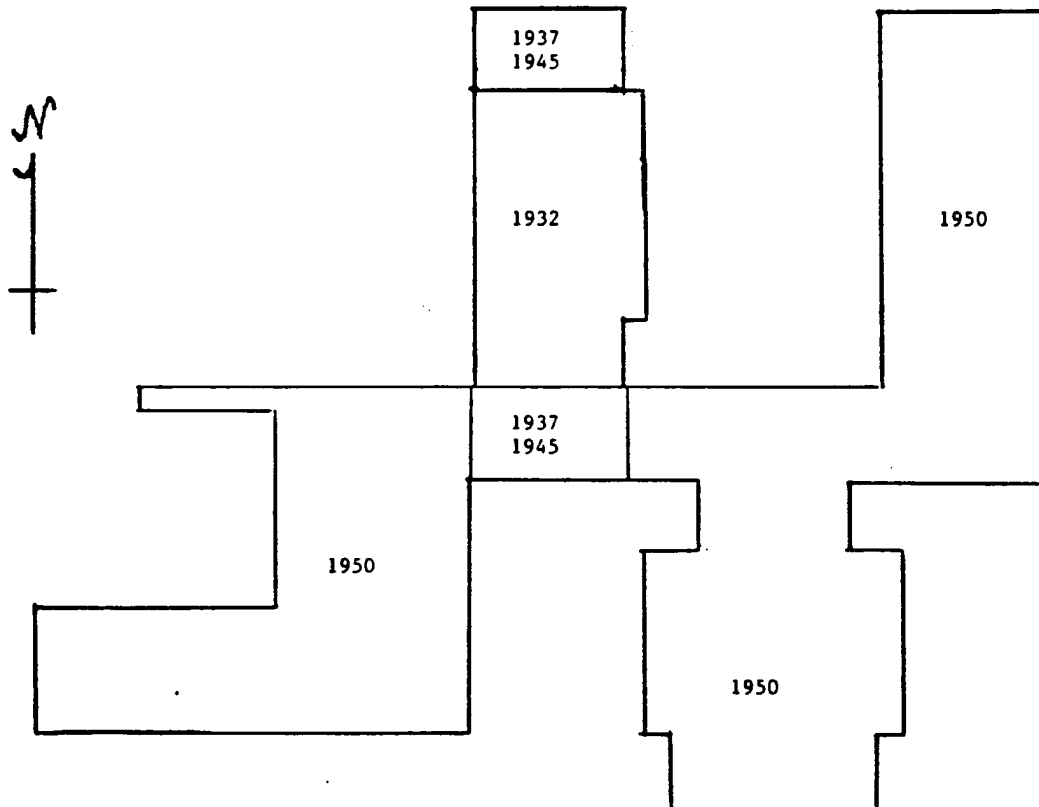
1932 original construction

c. 1937 addition of 3 first level
classrooms, chemistry lab,
and basement level shop area

1945 addition of 3 second level
classrooms and facility to
relocate library

1950 final addition of classrooms,
gymnasium-auditorium, shops

Plan Showing Construction
Dates



See Continuation Sheet No. 4

United States Department of the Interior
National Park Service

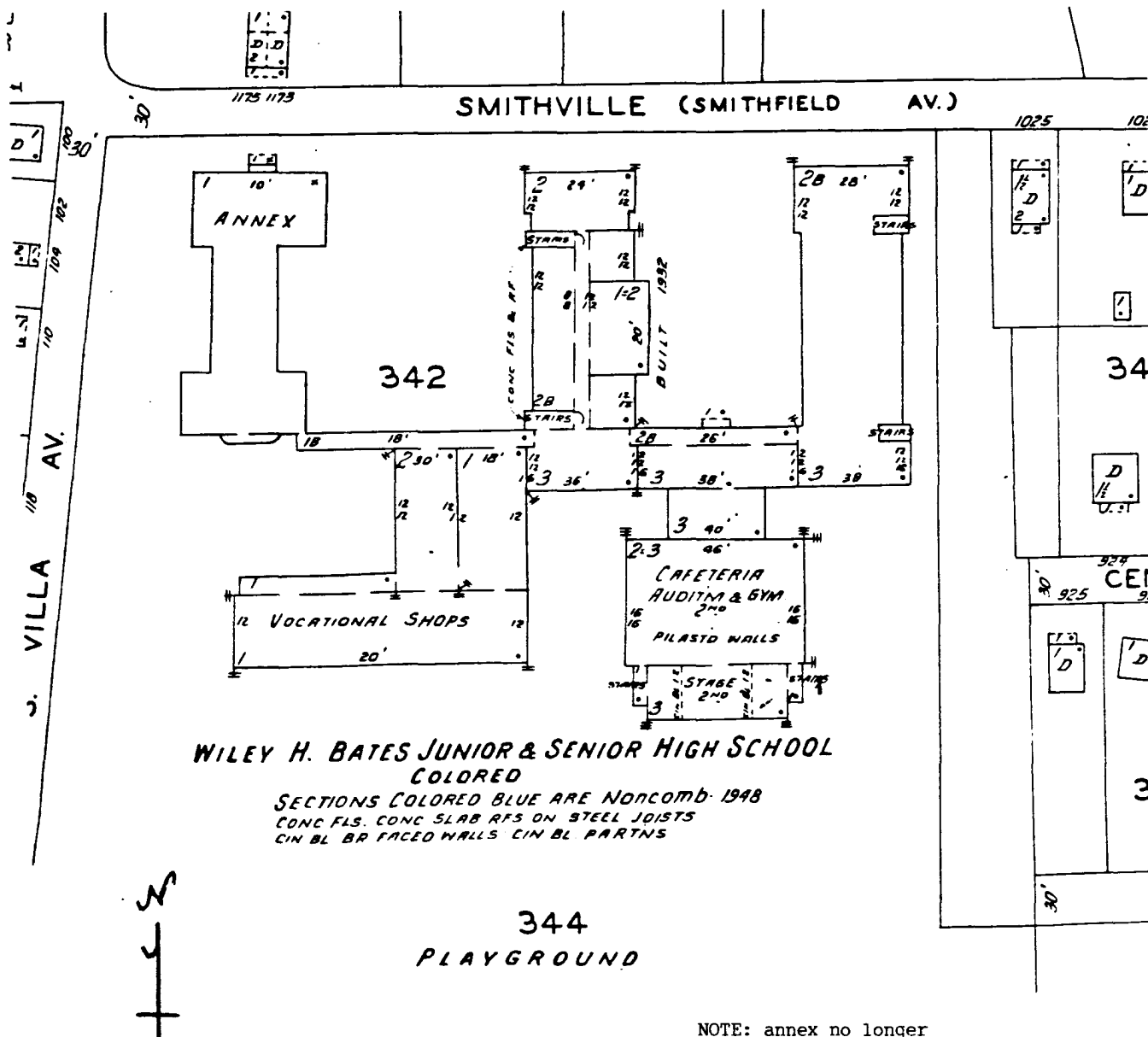
National Register of Historic Places
Continuation Sheet

Bates, Wiley H., High School
Anne Arundel County
Maryland

AA-12

Section number 7 Page 4

Insurance Maps of Annapolis, Maryland (map 41), Sanborn Map Co.
April 1930, corrected thru at least 1952, probable date of this page is June 1951



United States Department of the Interior
National Park Service

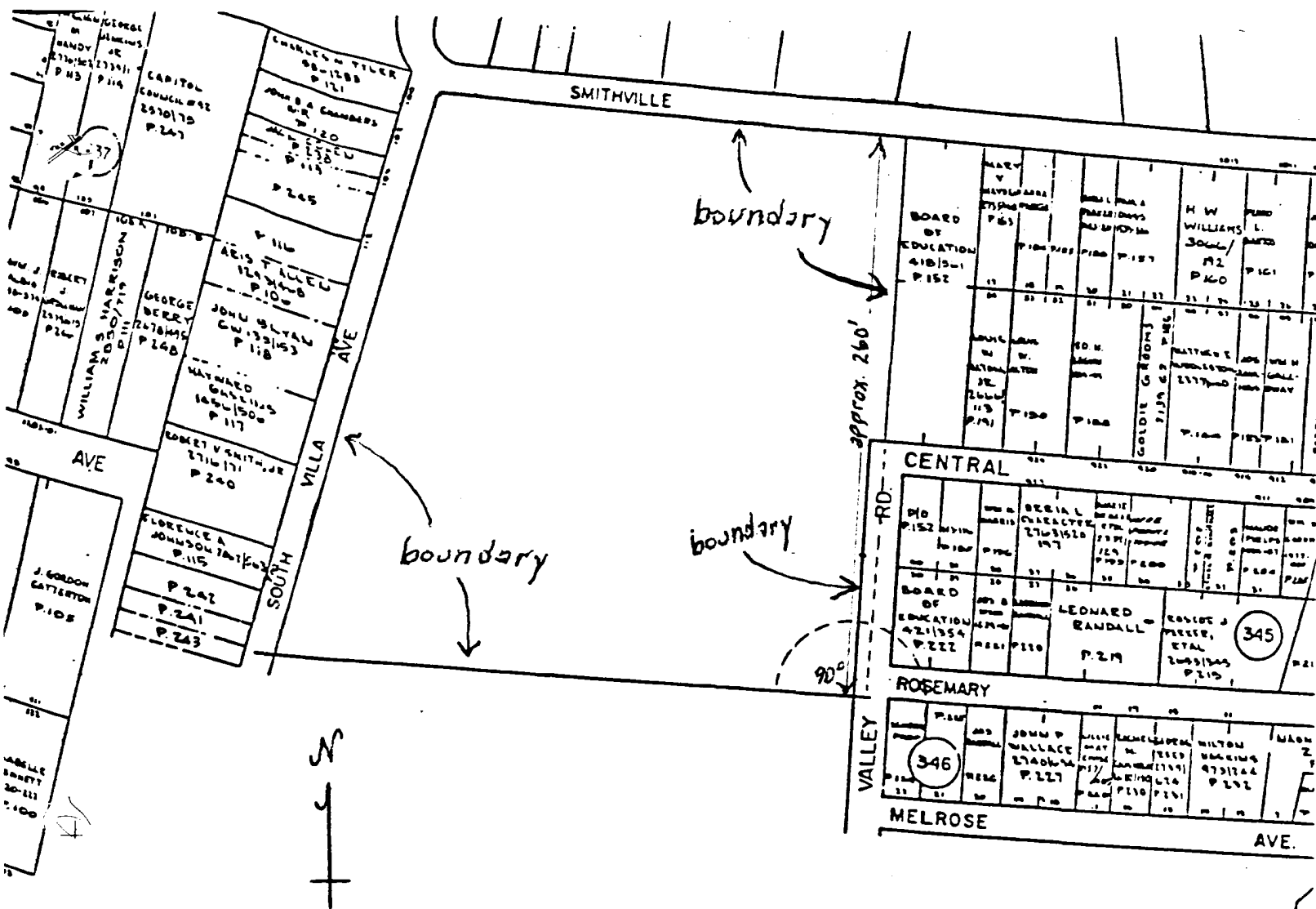
National Register of Historic Places
Continuation Sheet

Bates, Wiley H., High School
Anne Arundel County
Maryland

AA-12

Section number 10 Page 8

Boundary Map 1992





AA-12

BATES, WILEY H., HIGH SCHOOL

ANNE ARUNDEL COUNTY, MD

PHOTO BY MICHAEL JUSTIN DOWLING, 14 MAY '92

FILED AT MD SHPO

INTERIOR VIEW OF TYPICAL CLASSROOM

#10F7



AA-12

BATES, WILBY H., HIGH SCHOOL

ANNE ARUNDEL COUNTY, MD

PHOTO BY MICHAEL JUSTIN DOWLING, 14 MAY '92

NEG. AT MD SHPO

INTERIOR VIEW OF AUDITORIUM, c1982

#2 OF 7



AA-12

BATES, WILBY H., HIGH SCHOOL
ANNE ARUNDEL COUNTY, MD

PHOTO BY MICHAEL JUSTIN DOWLING, 14 MAY '92
NEG. AT MD SHPO

NORTH FACADE, c 1937-1945

#3 OF 7



AA-12

BATES, WILEY H., HIGH SCHOOL

ANNE ARUNDEL COUNTY, MD

PHOTO BY MICHAEL JUSTIN DOWLING, 14 MAY 1992

NEG. AT MD SHPO

ENTRY COURT, NORTH SIDE, c1950, 1932

#4 OF 7



AA-12

BATES, WILBY H., HIGH SCHOOL

ANNE ARUNDEL COUNTY, MD

PHOTO BY MICHAEL JUSTIN DOWLING, 14 MAY '92
NEG. AT MD SHPD

EAST ELEVATION, c1932, 1937-1945

#5 of 7



AA - 12

BATES, WILBY H., HIGH SCHOOL

ANNE ARUNDEL COUNTY, MD

PHOTO BY MICHAEL JUSTIN DOWLING, 14 MAY 1992

N86, AT MD SHPO

GENERAL VIEW FROM SE

#6 OF 7



AA-12

BATES, NIBBY H., HIGH SCHOOL

ANNE ARUNDEL COUNTY, MD

PHOTO BY MICHAEL JUSTIN DOWLING, 14 MAY 1992

NB0 AT MD SHPO

VIEW OF W. FACADE, c 1932, 1937-1945

#7057